

BOGUS STAMPS of the CONFEDERACY

The Confederate States of America founded their Post Office Department in February 1861; but postage stamps were not issued by the Confederacy until October of that year. During the eight months without government issued stamps, some Confederate postmasters printed and sold their own provisional stamps.

These provisional stamps were only valid at the offices from which they were issued. Similar to the private local posts, Confederate provisional stamps were not distributed at a large scale and were often produced cheaply with simple designs. This made them ideal for forgers who could easily sell their fakes to collectors who had never seen the genuine examples.

Not only did forgers produce copies of existing stamps - they wholly made up stamps for offices that never issued any. These fantasy stamps were complete fabrications; but they were believable to collectors who were unfamiliar with the Confederate postal system. The short-lived, local nature of postmaster provisionals meant that bogus stamps could be sold with little suspicion.

To make fantasy stamps even more believable, they were often based on real towns and services, or accompanied by stories to "prove" their legitimacy. The most popular fakes were convincing enough to be listed in catalogues of the period.



MODERN FANTASY

Today these fantasy stamps have become collectable in their own right. The stories of their creation and the printings by multiple forgers make them an interesting area of study to philatelists. They have even seen a resurgence in modern times, with reprints of old designs or new creations (like the example at left) being made and sold today.

This exhibit focuses on three well-known and prolific Confederate boguses: Buck's Richmond Express, Blockade Postage, and Florida Express.

The purpose of this exhibit is to teach the history and identification of these stamps.

This file has been modified from its original version for use by the Florida Postal History Society.

A NOTE ON TERMINOLOGY

The words "bogus" and "fantasy" are sometimes used interchangeably. **In this exhibit, both are used, and the word "bogus" is preferred.**

Please note that some philatelists do specify a difference, using "fantasy" to indicate fake stamps claiming to be issued from offices that *never existed* or *never issued stamps*; and using "bogus" to indicate fake stamps claiming to be issued from real offices that *did produce postage*.



FLORIDA EXPRESS

BACKGROUND INFORMATION

While there is no proof or documented information indicating that the Florida Express was ever a real post, the classification of this bogus post has been debated. **First appearing in the early 1860's, collectors have wondered if these should be considered local stamps, express labels, or Confederate issues.**

These stamps were first listed in 1864, both in the fifth edition of Mount Brown's *Catalogue of British, Colonial, and Foreign Postage Stamps*; and in Moens' *Le Timbre-Poste*.



143L9
WELLS FARGO & CO
25c RED
ON WHITE

The Florida Express stamps were most likely fantasies inspired by the Wells, Fargo & Co. Pony Express stamps, first issued in 1860 (only three years before the Florida Express stamps were supposedly issued). Both stamps use an "Express" name and central design of a postman on horseback.

At the start of the Civil War, Wells, Fargo & Co. discontinued their southern lines. Although it is *possible* that a private local service operated in Florida during this time, there is no surviving evidence of it. Florida was nowhere near the start of the Pony Express route and had no connection to the famous route.

The Florida Express stamps can be separated into several different types, which are catalogued differently depending on the authors. This exhibit is organized according to the Springer types with listing numbers from Mosher's *Catalog of Private Express Covers, Labels and Stamps*.



TYPE I



TYPE II



TYPE III



TYPE IV

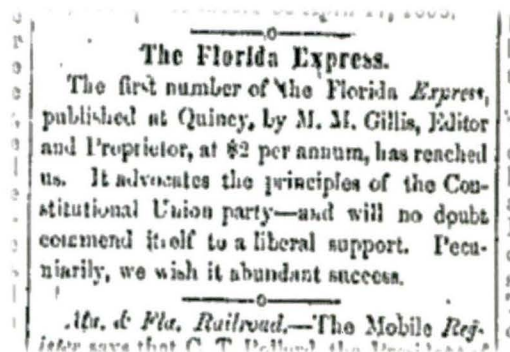


TYPE V

Although it's **most likely** that the Florida Express stamps are completely fabricated, some philatelists have sought to prove its legitimacy.

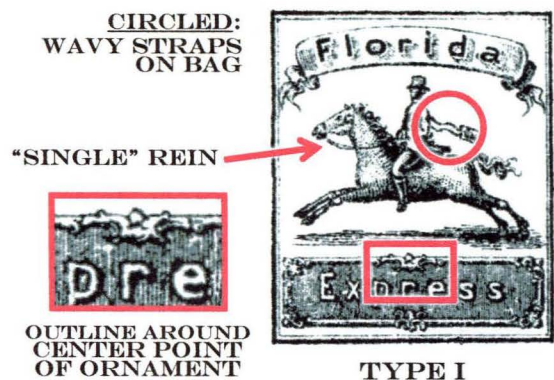
In 1860, a publication titled "The Florida Express" was issued by Murdoch M. Gillis in Quincy, Florida. Gillis was a lawyer who joined the 6th Florida Infantry Regiment in 1862. **Aside from the common name, however, there is nothing to connect this journal to the Florida Express stamps.**

COPY ARTICLE FROM
FLORIDIAN AND JOURNAL
TALLAHASSEE, FLORIDA
SEPTEMBER 8, 1860

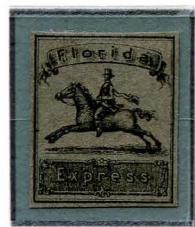


TYPE I

Although it is not certain, it's believed that the Type I stamps are the original design. These have the clearest, most finely executed lines of the known designs. The forger is unknown.



On the Type I stamps, the scrollwork ornament above the "pre" of "Express" is small and very fine. It is shaped like a wide fleur-de-lis, and is sometimes described as a "jester's hat" shape. In this design, the center point is separated from the rest of the ornament with a thin outline. Although both the left and right of the horse's reins are visible on close inspection, they are so close together that they appear as only one curved line. The toe of the rider's boot points slightly toward the ground; and the straps on his bag are wavy.



**FLAX-L1
TYPE I
BLACK
ON GRAY BROWN**



**FLAX-L1
TYPE I
BLACK
ON BUFF**



**FLAX-L1
TYPE I
BLACK
ON GRAY BUFF**



**FLAX-L1
TYPE I
BLACK
ON PINKISH**



**FLAX-L1
TYPE I
BLACK
ON PALE PINK**



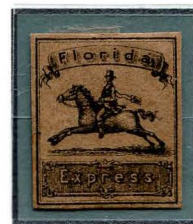
**FLAX-L1
TYPE I
BLACK
ON PALE SALMON**



**FLAX-L1
TYPE I
BLACK
ON PINK**



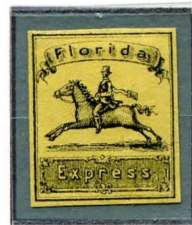
**FLAX-L1
TYPE I
BLACK
ON RED VIOLET**



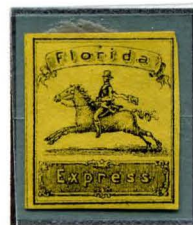
**FLAX-L1
BOGUS 1
BLACK
ON BROWN**



**FLAX-L1
BOGUS 1
BLACK
ON ORANGE**



**FLAX-L1
BOGUS 1
BLACK
ON YELLOW**



**FLAX-L1
BOGUS 1
BLACK
ON DEEP YELLOW**



**FLAX-L1
BOGUS 1
BLACK
ON GREEN**

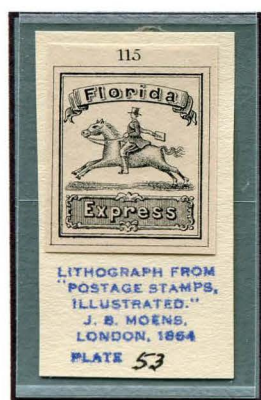


**FLAX-L1
BOGUS 1
BLACK
ON BLUE**



**FLAX-L1
BOGUS 1
BLACK
ON DARK BLUE**

MOENS ILLUSTRATION



ORIGINAL
ILLUSTRATION
CUT FROM MOENS
1864 CATALOGUE
PLATE 53 - DERAEDEMAERKER

Jean-Baptiste Moens published illustrations of the Florida Express stamp in his philatelic journal, *Le Timbre-Poste*. These were printed on the pages of his catalogues and albums, and were not intended to be forgeries.

The lithograph for the Florida Express illustration in Moens' 1864 catalogue was made by F. Deraedemaeker. This design was very well done, with fine detail in the shading. The ornament over "Express" is simplified to look like a solid "jester's hat" shape. Both the left and the right of the horse's reins are visible, and the toe of the rider's boot is parallel to the ground.

The 1864 catalogue listed the stamp in pink, chamois, and blue; and claimed it was issued by a local post.

TYPE II

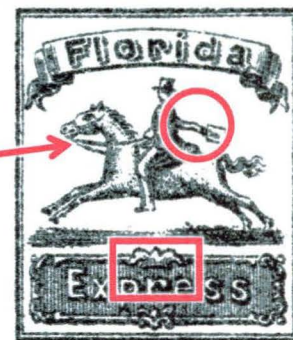
After Moens published his illustration of the Florida Express stamp, copies of the design were printed by forgers. The forgeries based on the first Moens illustration are known as Type II. Although they share the same design characteristics as Deraedemaeker's lithograph, these forgeries are not printed with the same detailed quality.

CIRCLED:
WAVY STRAPS
ON BAG

DOUBLE REIN



SIMPLIFIED
"JESTER'S HAT"
ORNAMENT



TYPE II



FLAX-I2
TYPE II
LIGHT RED
ON WHITE



FLAX-I2
TYPE II
BLACK
ON GOLDEN YELLOW



FLAX-I2
TYPE II
BLACK
ON LIGHT BLUE



FLAX-I2
TYPE II
BLACK
ON PASTEL PINK



FLAX-I2
TYPE II
BLACK
ON PASTEL GREEN



FLAX-I2
TYPE II
DULL GOLD
ON BLUE SC



FLAX-I2
TYPE II
BLACK
ON PALE PINK



FLAX-I2
TYPE II
BLACK
ON PASTEL YELLOW

TYPE III

S. Allan Taylor printed many of these bogus stamps; his version, Type III, is the most prolific. It is easy to identify this stamp type by the protrusion on the upper left of the "o" in "Florida". The Taylor fakes clearly show two reins, and the foot of the rider is perpendicular to the ground. The ornament over "Express" is a solid "jester's hat" shape that is so simplified it is sometimes described as a wide "M".

Like most of Taylor's fakes, these stamps were printed in a wide variety of colors.

Taylor's stamps were printed many times, which resulted in wear to some areas of the die. Some of these flaws appear consistently - they are referred to in this exhibit as "states", although the exact order in which these flaws developed is not certain.

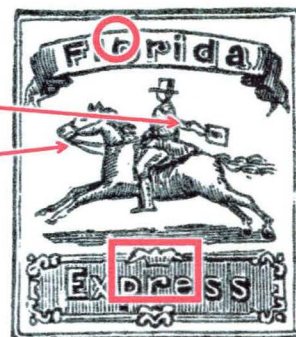
CIRCLED: PROTRUSION ON "O"
IN "FLORIDA"

WAVY STRAPS
ON BAG

DOUBLE REIN



VERY SIMPLE
"M"-SHAPED
ORNAMENT



TYPE III



TYPE III - STATE 1
BUMP ON "O"
NO SIGNIFICANT



FLAX-L3
TYPE III
VIOLET
ON BLUE
STATE 1
TAYLOR FORM 21



FLAX-L3
TYPE III
PURPLE
ON PALE PINK
STATE 1



FLAX-L3
TYPE III
LAVENDER
ON PINKISH BUFF
STATE 1



FLAX-L3
TYPE III
LAVENDER
ON YELLOW
STATE 1



FLAX-L3
TYPE III
LAVENDER GRAY
ON PINKISH BUFF
STATE 1



FLAX-L3
TYPE III
BROWN
ON WHITE
STATE 1



FLAX-L3
TYPE III
RED BROWN
ON ORANGE
STATE 1



FLAX-L3
TYPE III
RED
ON PALE VIOLET BLUE
STATE 1



FLAX-L3
TYPE III
RED VIOLET
ON WHITE
STATE 1



FLAX-L3
TYPE III
RED
ON CREAM
STATE 1



FLAX-L3
TYPE III
GREEN
ON YELLOW
STATE 1



FLAX-L3
TYPE III
BLUE
ON PINK
STATE 1



FLAX-L3
TYPE III
BLUE
ON WHITE
STATE 1



FLAX-L3
TYPE III
GRAY
ON BUFF
STATE 1



FLAX-L3
TYPE III
RED
ON ORANGE LAID
STATE 1

FLORIDA EXPRESS - TYPE III



TYPE III - STATE 2
BREAK IN RIGHT
BORDER



FLAX-L3
TYPE III
DARK GREEN
ON PALE GRAY BROWN
STATE 2
TAYLOR FORM 20



FLAX-L3
TYPE III
BROWN
ON WHITE
STATE 2



FLAX-L3
TYPE III
BROWN
ON GRAYISH
STATE 2



FLAX-L3
TYPE III
BROWN
ON CREAM
STATE 2



FLAX-L3
TYPE III
RED
ON WHITE
STATE 2



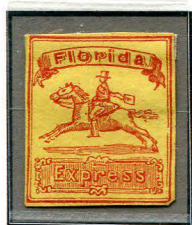
FLAX-L3
TYPE III
DEEP RED
ON WHITE
STATE 2



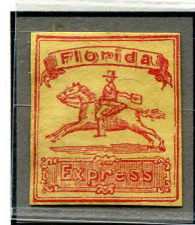
FLAX-L3
TYPE III
GREEN
ON WHITE
STATE 2



FLAX-L3
TYPE III
GREEN
ON PALE BUFF
STATE 2



FLAX-L3
TYPE III
RED
YELLOW LAID
STATE 2



FLAX-L3
TYPE III
BRIGHT RED
ON YELLOW LAID
STATE 2



FLAX-L3
TYPE III
DEEP RED
ON YELLOW LAID
STATE 2



FLAX-L3
TYPE III
DEEP RED
ON BLUE GREEN LAID
STATE 2

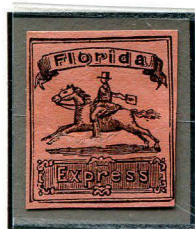


FLAX-L3
TYPE III
DEEP RED
BLUISH LAID
STATE 2

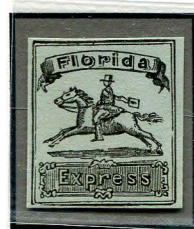


TYPE III - STATE 3
BREAKS AT RIGHT &
LOWER LEFT

The border of Taylor's Florida Express die first wore down on the right side (states 2 and 3). As this flaw progressed, heavy wear also appears on the lower left border.



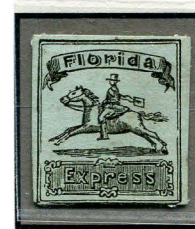
FLAX-L3
TYPE III
BLACK
ON SALMON
STATE 3
TAYLOR FORM 1



FLAX-L3
TYPE III
BLACK
ON BLUISH
STATE 3
TAYLOR FORM 1



FLAX-L3
TYPE III
BLACK
ON PALE PINK LAID
STATE 3
TAYLOR FORM 1



FLAX-L3
TYPE III
BLACK
ON GREENISH LAID
STATE 3
TAYLOR FORM 1

FLORIDA EXPRESS - TYPE III



FLAX-L3
TYPE III
BLACK
ON WHITE WMK
STATE 3
TAYLOR FORM 1



FLAX-L3
TYPE III
BLACK
ON RASPBERRY SC WMK
STATE 3
TAYLOR FORM 1



FLAX-L3
TYPE III
RED
ON GRAY
STATE 3
TAYLOR FORM 12



FLAX-L3
TYPE III
RED
ON WHITE
STATE 3
TAYLOR FORM 12



FLAX-L3
TYPE III
GREEN
ON GREEN
STATE 3
TAYLOR FORM 20



FLAX-L3
TYPE III
GREEN
ON PALE GREEN
STATE 3
TAYLOR FORM 20



FLAX-L3
TYPE III
PALE BLUE
ON CREAM
STATE 3
TAYLOR FORM S15



FLAX-L3
TYPE III
PALE BLUE
ON LIGHT PINK LAID
STATE 3
TAYLOR FORM S15



FLAX-L3
TYPE III
PURPLE
ON WHITE
STATE 3



FLAX-L3
TYPE III
VIOLET
ON WHITE
STATE 3



FLAX-L3
TYPE III
VIOLET
ON CREAM
STATE 3



FLAX-L3
TYPE III
DEEP YELLOW
ON WHITE
STATE 3



FLAX-L3
TYPE III
YELLOW
ON WHITE
STATE 3



FLAX-L3
TYPE III
BROWN YELLOW
ON WHITE
STATE 3



FLAX-L3
TYPE III
GREEN
ON BUFF
STATE 3



FLAX-L3
TYPE III
GREEN
ON WHITE
STATE 3



FLAX-L3
TYPE III
DEEP GREEN
ON CREAM
STATE 3



FLAX-L3
TYPE III
DEEP GREEN
ON WHITE
STATE 3



FLAX-L3
TYPE III
GREENISH GRAY
ON WHITE
STATE 3



FLAX-L3
TYPE III
DARK BLUE
ON WHITE
STATE 3



FLAX-L3
TYPE III
BLUE
ON WHITE
STATE 3



FLAX-L3
TYPE III
BLACK
ON VERMILION SC
STATE 3

FLORIDA EXPRESS - TYPE III

At some point, the border of Taylor's die was re-entered, strengthening the lower border line. The new bottom border lines are messier and often hold extra ink, resulting in the appearance of a single, thick line. The lower left corner remains broken.



TYPE III - STATE 4
REENTERED BORDER
w/ DARK BOTTOM
BREAK AT LOWER LEFT



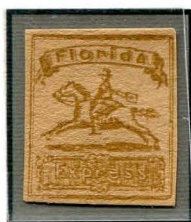
FLAX-L3
TYPE III
RED VIOLET
ON LIGHT BLUE GREEN
STATE 4
TAYLOR FORM AB11



FLAX-L3
TYPE III
RED VIOLET
ON YELLOW GREENISH
STATE 4
TAYLOR FORM AB11



FLAX-L3
TYPE III
RED VIOLET
ON LIGHT GREENISH LAID
STATE 4
TAYLOR FORM AB11



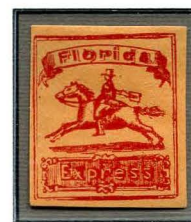
FLAX-L3
TYPE III
BROWN
ON TAN
STATE 4



FLAX-L3
TYPE III
RED
ON PALE TAN
STATE 4



FLAX-L3
TYPE III
RED
ON BUFF
STATE 4



FLAX-L3
TYPE III
RED
ON ORANGE BUFF
STATE 4



FLAX-L3
TYPE III
RED (SHADE)
ON WHITE
STATE 4



FLAX-L3
TYPE III
RED (SHADE)
ON WHITE
STATE 4



FLAX-L3
TYPE III
LIGHT RED
ON WHITE
STATE 4



FLAX-L3
TYPE III
LIGHT RED
ON WHITE - CANCELLED
STATE 4



FLAX-L3
TYPE III
DEEP BRIGHT RED
ON WHITE
STATE 4



FLAX-L3
TYPE III
RED
ON ROUGH OCHRE
STATE 4



FLAX-L3
TYPE III
RED
ON PINK SC
STATE 4



FLAX-L3
TYPE III
BLUE
ON TAN
STATE 4



FLAX-L3
TYPE III
BLUE
ON WHITE LAID
STATE 4

FLORIDA EXPRESS - TYPE III

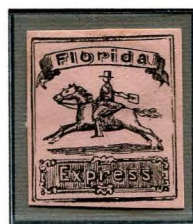
Although the right border is initially corrected when the border is reentered, it later breaks again.



TYPE III - STATE 5
REENTERED BORDER
BREAK AT RIGHT
BREAK AT LOWER LEFT



FLAX-L3
TYPE III
BLACK
ON WHITE
STATE 5



FLAX-L3
TYPE III
BLACK
ON PALE PINK
STATE 5



FLAX-L3
TYPE III
BROWN
ON WHITE
STATE 5



FLAX-L3
TYPE III
BROWN
ON PINK
STATE 5



FLAX-L3
TYPE III
BROWN
ON LIGHT ORANGE
STATE 5



FLAX-L3
TYPE III
RED BROWN
ON WHITE
STATE 5



FLAX-L3
TYPE III
RED
ON LIGHT BLUE
STATE 5



FLAX-L3
TYPE III
RED
ON WHITE
STATE 5



FLAX-L3
TYPE III
ORANGE
ON WHITE
STATE 5



FLAX-L3
TYPE III
DARK GREEN
ON WHITE
STATE 5



FLAX-L3
TYPE III
DARK GREEN
ON CREAM
STATE 5



FLAX-L3
TYPE III
DARK GREEN
ON LIGHT GREEN
STATE 5



FLAX-L3
TYPE III
DARK GREEN
ON BLUE GREEN
STATE 5



FLAX-L3
TYPE III
DARK GREEN
ON ORANGE BROWN
STATE 5



FLAX-L3
TYPE III
BLUE
ON CREAM
STATE 5



FLAX-L3
TYPE III
BLUE
ON WHITE
STATE 5



FLAX-L3
TYPE III
BLACK
ON PINK LAID
STATE 5

FLORIDA EXPRESS - TYPE III

The last "state" of Taylor's Florida Express die can contain any of the flaws from the previous states, but is identified by a lesser print quality. In this state, marks appear around the horse. These marks can vary in appearance, but usually look like movement lines, and give the impression that the horse is running very fast. This is sometimes known as the "fast horse" variation.



TYPE III - STATE 6
REENTERED BORDER
FAST HORSE



FLAX-L3
TYPE III
ORANGE BROWN
ON WHITE
STATE 6
TAYLOR FORM S16



FLAX-L3
TYPE III
VIOLET BROWN
ON WHITE
STATE 6
TAYLOR FORM S16



FLAX-L3
TYPE III
BROWN (SHADE)
ON GRAYISH WHITE
STATE 6



FLAX-L3
TYPE III
BROWN (SHADE)
ON GRAYISH WHITE
STATE 6



FLAX-L3
TYPE III
BROWN (SHADE)
ON WHITE
STATE 6



FLAX-L3
TYPE III
BLUE
ON YELLOW
STATE 6



FLAX-L3
TYPE III
BLUE
ON PINK
STATE 6



FLAX-L3
TYPE III
BLUE
ON WHITE
STATE 6



FLAX-L3
TYPE III
BLUE
ON CREAM
STATE 6



FLAX-L3
TYPE III
DEEP BLUE
ON WHITE
STATE 6

The cover here was mailed from St. Augustine, Florida, to a patient at Bellevue Hospital in New York City. At some point after its delivery, a creative philatelist affixed the Florida Express bogus in an attempt to pass the cover as a genuine usage of the stamp. The ink used to cancel the bogus stamp does not match that of the genuine handstamps..



FLAX-L3 - TYPE III
BLUE ON WHITE H. LAID (STATE 4) FOUR-RING TARGET CANCEL
ON GENUINE COVER WITH 3c US STAMP, FOUR-RING TARGET CANCEL
ST. AUGUSTINE, FLORIDA DOUBLE CIRCLE DATESTAMP - OCTOBER 24

TYPE IV

The printer of the Type IV Florida Express stamps is unknown. These stamps are printed on similar papers to those used for the Type I stamps, indicating that they *may* have been printed by the same person or company. The Type IV design shows only one rein and the boot of the rider is pointed downward. The straps of the rider's bag are smooth arcs.

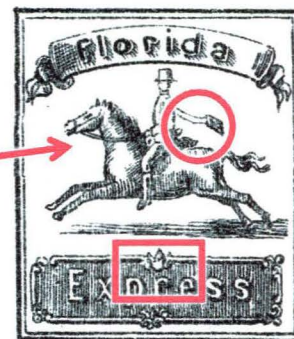
The Type IV stamps are identified primarily by the ornament above "Express", which appears as smaller shield or tulip-like shape.

CIRCLED:
CURVED STRAPS
ON BAG

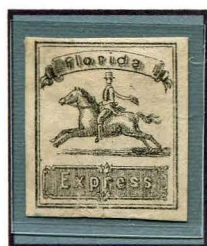
"SINGLE" REIN



SMALL
TULIP-SHAPED
ORNAMENT



TYPE IV



FLAX-L4
TYPE IV
BLACK
ON WHITE



FLAX-L4
TYPE IV
BLACK
ON PINKISH



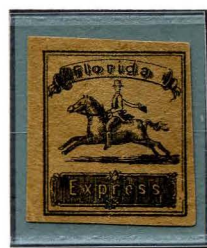
FLAX-L4
TYPE IV
BLACK
ON PINKISH GRAY



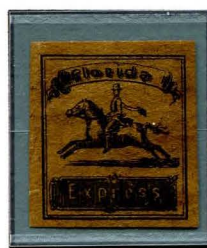
FLAX-L4
TYPE IV
BLACK
ON CREAM



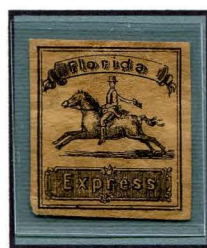
FLAX-L4
TYPE IV
BLACK
ON GRAY BUFF



FLAX-L4
TYPE IV
BLACK
ON TAN



FLAX-L4
TYPE IV
BLACK
ON BROWN



FLAX-L4
TYPE IV
BLACK
ON BUFF



FLAX-L4
TYPE IV
BLACK
ON ORANGE BUFF



FLAX-L4
TYPE IV
BLACK
ON LIGHT RED



FLAX-L4
TYPE IV
BLACK
ON YELLOW



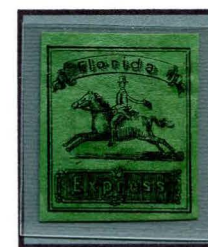
FLAX-L4
TYPE IV
BLACK
ON DEEP YELLOW



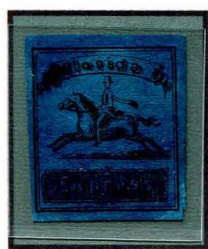
FLAX-L4
TYPE IV
BLACK
ON PALE GREEN



FLAX-L4
TYPE IV
BLACK
ON GREEN



FLAX-L4
TYPE IV
BLACK
ON DEEP GREEN



FLAX-L4
TYPE IV
BLACK
ON DEEP BLUE



FLAX-L4
TYPE IV
BLACK
ON BLUE



FLAX-L4
TYPE IV
BLACK
ON LIGHT BLUE



FLAX-L4
TYPE IV
BLACK
ON PALE BLUE



FLAX-L4
TYPE IV
BLACK
ON PALE BLUE VIOLET

TYPE V

At some point, Moens changed the illustrations in his publications to more closely resemble the Type IV design. In the 1883 edition of *Le Timbre-Poste*, the illustration used is the same design as the Type V fake.

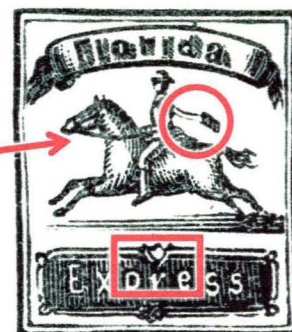
Although the Type V design is based on Type IV, the stamps can be easily identified by their cruder printing. The corner ornaments on the panel around the word "Express" are simple circles, and the horse's front legs are curved inward.

CIRCLED:
CURVED STRAPS
ON BAG

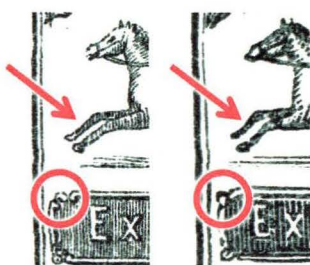
"SINGLE" REIN



SMALL
TULIP-SHAPED
ORNAMENT

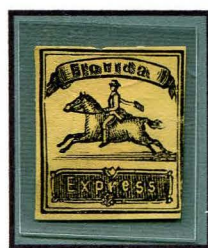


TYPE V



TYPE IV

TYPE V



FLAX-L5
TYPE V
BLACK
ON LIGHT YELLOW



FLAX-L5
TYPE V
INTENSE BLACK
ON CREAM



FLAX-L5
TYPE V
GRAY BLACK
ON CREAM



FLAX-L5
TYPE V
BLACK
ON WHITE
CANCELLED

HAND DRAWN



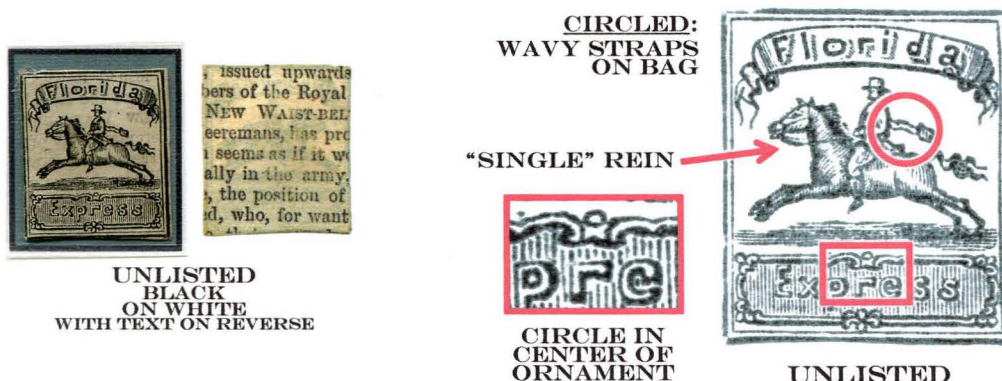
FLAX-L8
BLUE-BLACK PEN
ON WHITE
PERFORATED

This Florida Express bogus is currently listed in Mosher's *Catalog of Private Express Covers, Labels and Stamps*. It is a hand drawn fake, with only a minimal resemblance to the original design. The word "Expresse" is spelled with a superfluous "e" on the end. This was almost certainly not intended to pass as a forgery - it was likely product of a philatelist showing their artistic skills. This example is ungummed and perforated.

If you have any additional information about the artist, please contact the exhibitor.

UNLISTED TYPE

The bogus featured here is an unlisted variety. It is printed on paper with text on the reverse - likely from some philatelic journal. This illustration is very well done, and appears to copy some of the characteristics of Type I. **This is the only type known in which the shadow under the horse extends all the way to both left and right borders.**



MODERN FAKES

These modern forgeries appear to be based on photocopies of the Type II design. They are printed on a variety of colorful papers.



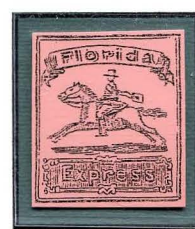
MODERN
BLACK
ON WHITE



MODERN
BLACK
ON LIGHT GREEN



MODERN
BLACK
ON LAVENDER



MODERN
BLACK
ON BRIGHT PINK



MODERN
BLACK
ON BROWN



MODERN
BLACK
ON MAROON



MODERN
BLACK
ON LIGHT BROWN



MODERN
BLACK
ON LIGHT BLUE



MODERN
BLACK
ON GOLDEN TAN