

The Everglades: River of Grass

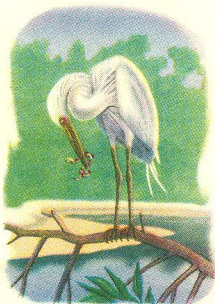
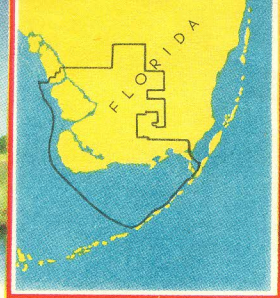
An Exhibit of First-day Covers to Celebrate the Preservation of Nature.



President Harry Truman attended the dedication of the Everglades National Park on December 5, 1947. The third largest park visited by a million people a year protects one of the most delicate eco-systems in the world. This oversized post card is symptomatic of the problem. The reverse side extols the virtues of the park with beautiful prose . . . "the great birds break their long garlands to form swirling bouquets as they hover over the emerald isle that is their nesting place."

Yet the card was produced by Florida Power and Light Company of Miami and reminds the reader that Florida has "unparalleled industrial and commercial opportunities" in its campaign "Helping Build Florida." The irony is strong: preserve or develop?

*Note that each page uses the 1st day cover catalogue number and cachet maker's name.

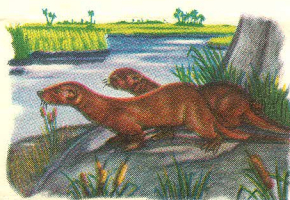


EVERGLADES *National Park* **COMMISSION**

POST OFFICE BOX 1830
MIAMI 10, FLORIDA

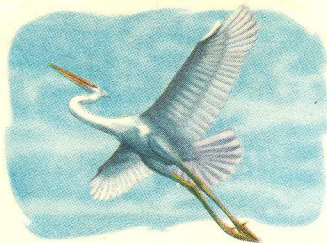
G. G. WARE
LEESBURG, FLORIDA

A SOUVENIR FOR YOU !

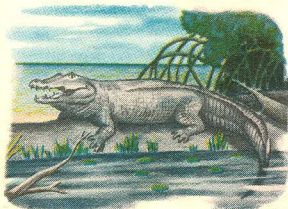


The Post Office Department has issued a special Everglades National Park Commemorative Stamp.

The first of these stamps will be sold December 5th from the post office at Florida City. Florida City is south of Miami and near the eastern edge of the park area. This post office was selected in order that this new stamp may bear the post-mark "Florida".



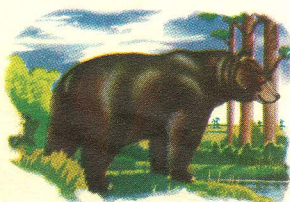
I am sending you this stamp attached to an envelope of the Everglades National Park Commission, hoping that it will be a souvenir for you. I have the honor to be a member of the Everglades National Park Commission and have the privilege of using their stationery in sending you this souvenir stamp and first-day cover. Some stamp collectors consider first-day covers of special value.



Sincerely yours,

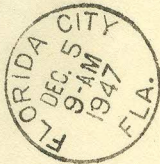
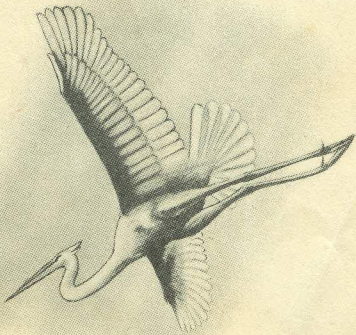
G. G. Ware,

December 5, 1947.



Florida provides the only Sub-Tropical National Park in the United States

EVERGLADES
POST OFFICE BOX 1830
National Park COMMISSION
MIAMI 10, FLORIDA



FIRST DAY OF ISSUE

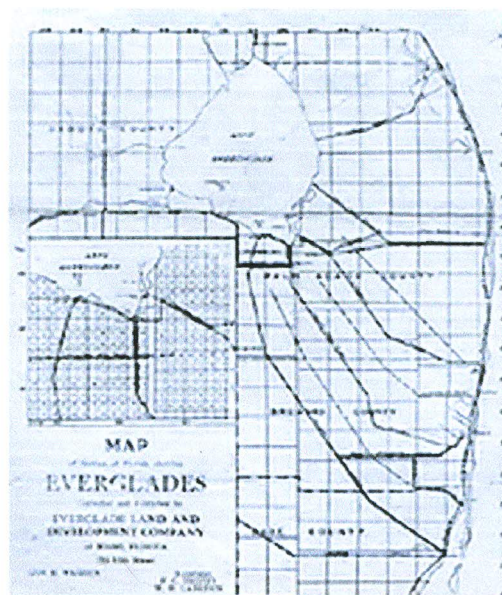
Mr. Roy H. Gibbs, Vice-President,
The First National Bank at Orlando
Orlando, Florida

952 – 14 Wakefield Company (WCO) cachet – two color orange and green with indistinct drawing of a swamp with aligator, birds and Seminole Indian in a canoe. Block of four, horizontally positioned.

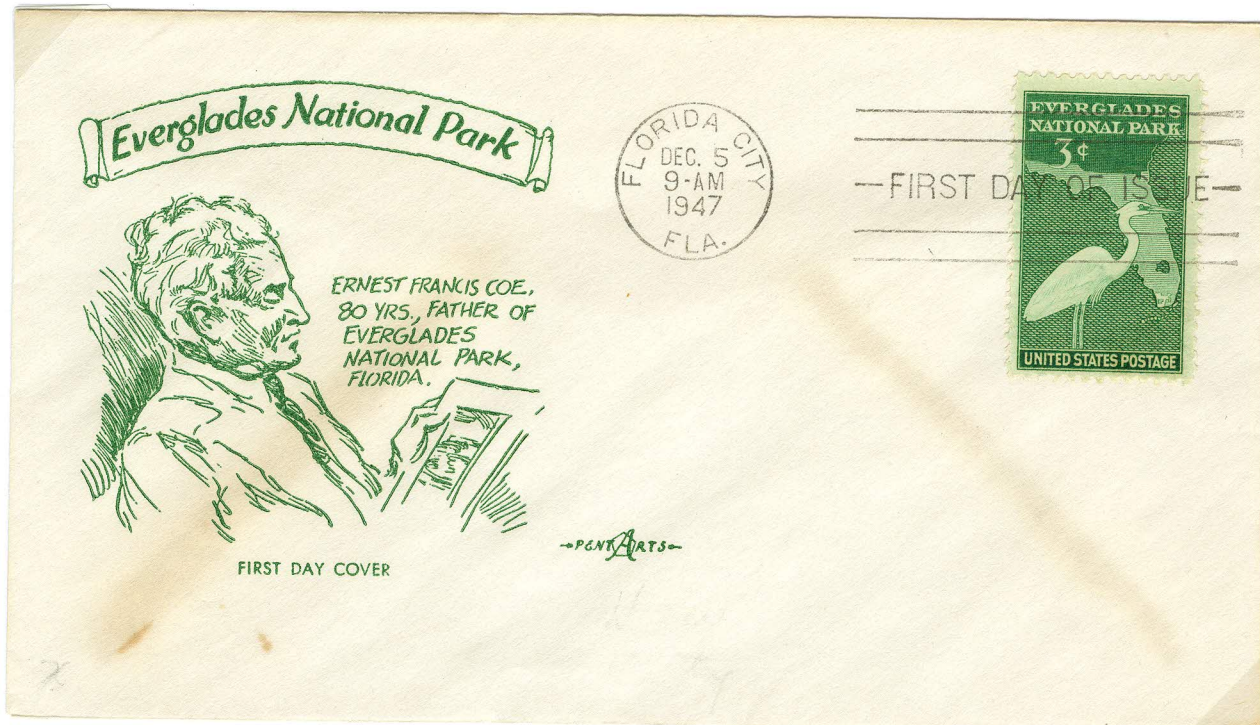


Development

The cachet refers to the land patent issued to the state of Florida in 1850 giving the state thousands of acres to sell for the purpose of developing the land. In 1881, **Hamilton Disston** (1844 – 1896) bought four million acres at 25 cents per acre and became the largest private landowner in the United States. His dredging operations began to straighten the Kissimmee River, dredge the Caloosahatchee, and dig canals to control Lake Okeechobee and the headwaters of the Everglades. Between 1923 and 1928 **Barron Collier** built the Tamiami Trail that dissected the Everglades east west from Miami to Everglades City.



952 – 18 Pent Arts – one of five designed by the cachet maker, printed in green to match the color of the stamp. Ernest Francis Coe is pictured holding a document.

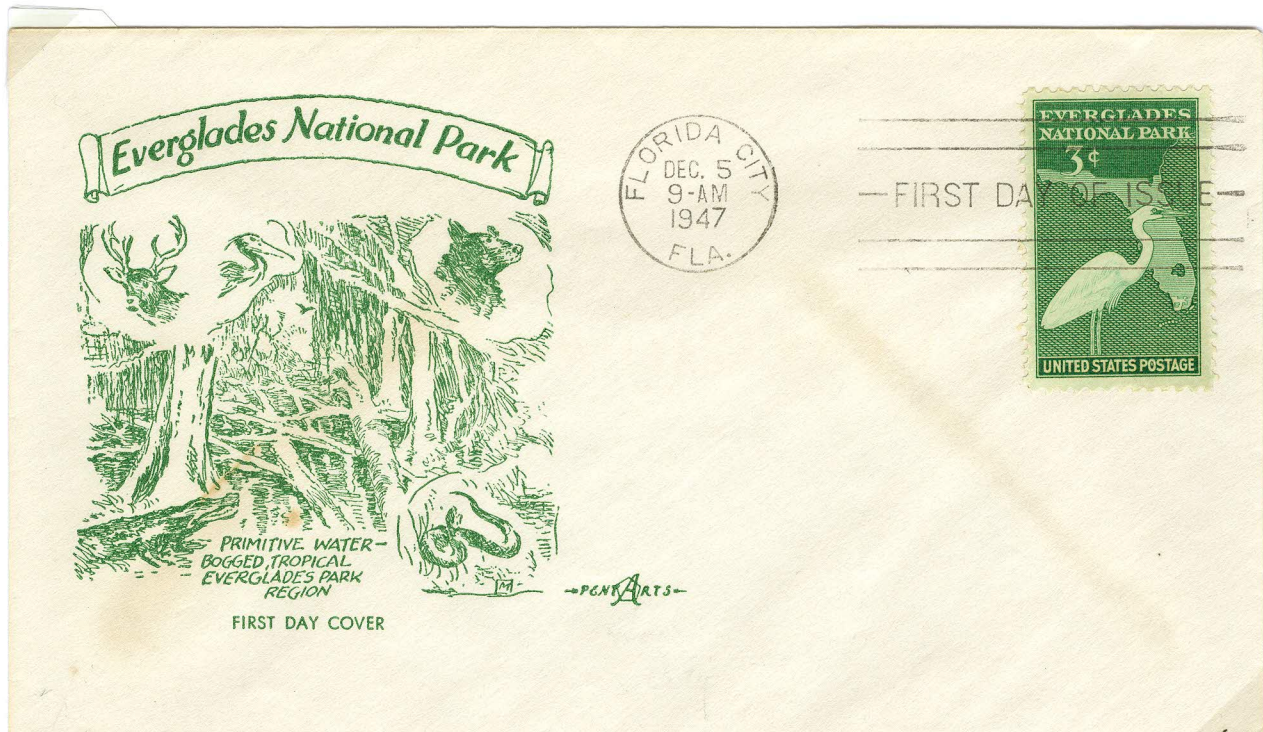


Ernest Francis Coe (1866 – 1951)

Ernest “Tom” Coe was a naturalist and landscape architect who moved to Miami and eventually became known as the “Father of the Everglades National Park.” In the 1920’s, Coe with Charles Torrey Simpson and David Fairchild started the Florida Society of Natural History whose purpose was to protect wading birds from being killed for their feathers and rare orchids being plucked from their habitat. Congress passed a bill in 1934 to begin acquiring the land for the park, but the park was not dedicated until 1947. Coe received a plaque (right) at the dedication although he wanted nothing more to do with the Everglades because it was less than the size he envisioned.



952 – 17 Pent Arts – one of five designed by cachet maker, printed in green to match the color of the stamp. Forest scene includes a deer, bear, snake, alligator and bird.

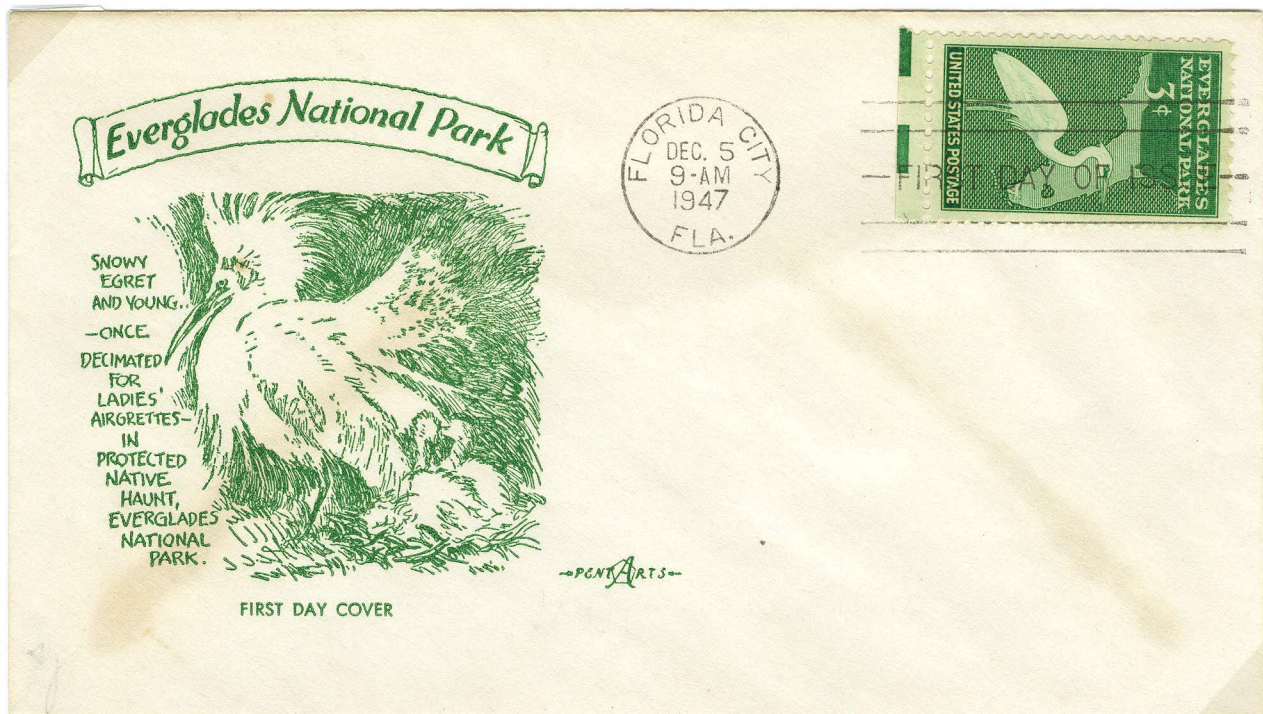


Marjory Stoneman Douglas (1890 – 1998)

Marjory Douglas has been called the “Grande Dame of the Everglades” for her relentless campaign to save the land and change people’s attitudes. In 1947 her book ***The Everglades : River of Grass*** redefined the Everglades as a treasured river instead of a worthless swamp. She received the Presidential Medal of Freedom for her relentless fight against agricultural and business interests as a reporter for *The Miami Herald* and with her freelance writing. It would not be surprising for her to get her own stamp someday as her work has been compared to that of **Rachel Carson** (Scott #1857), the writer of *Silent Spring*.



952 – 16 Pent Arts – one of five designed by cachet maker, printed in green to match the stamp color.
Drawing of a snowy egret and young.



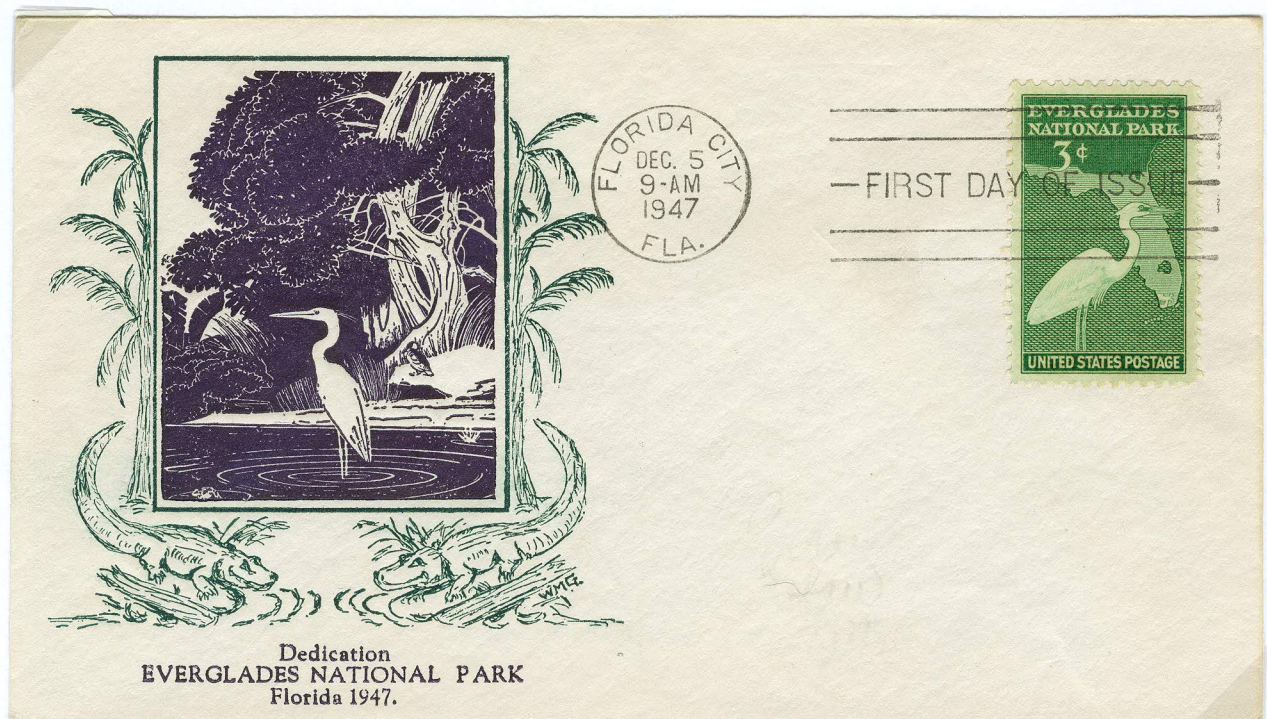
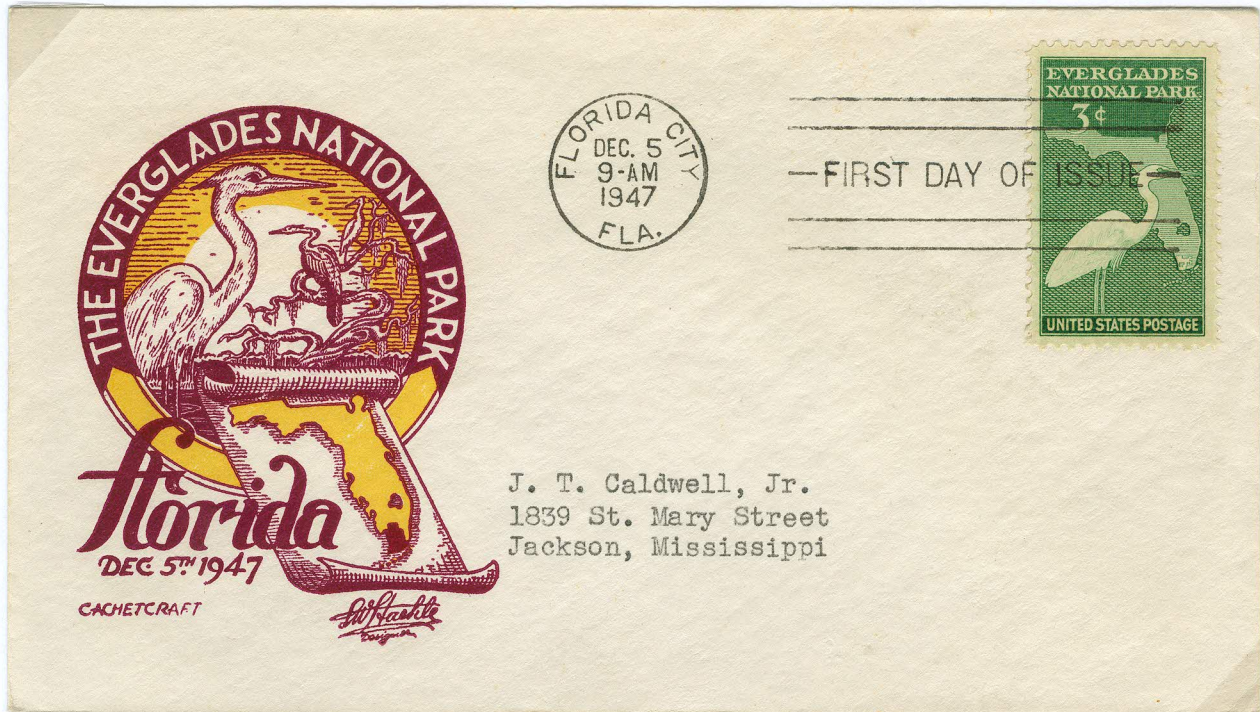
The Snowy Egret

Featured prominently on the stamp (Scott 952) is a great white heron or great egret. There are 64 varieties of these birds and some are called bitterns. They are wading birds and Florida varieties include cattle egrets, great blue, tricolored, and the snowy. One can recognize them by size and color but the snowy has a black beak, yellow legs and black feet. The head feathers are more “bushy” and prominent which make them targets of fashion designers of the past. The French word *aigrette* refers to a decoration used for ladies hats or even for additions to soldier’s headgear.



952 – 2 Cachetcraft/Staehle – two color cachet in yellow and purple with egret/heron prominent in the design.

952 – 29 W.G. Granby – two color cachet in dark blue and green with heron and alligators.



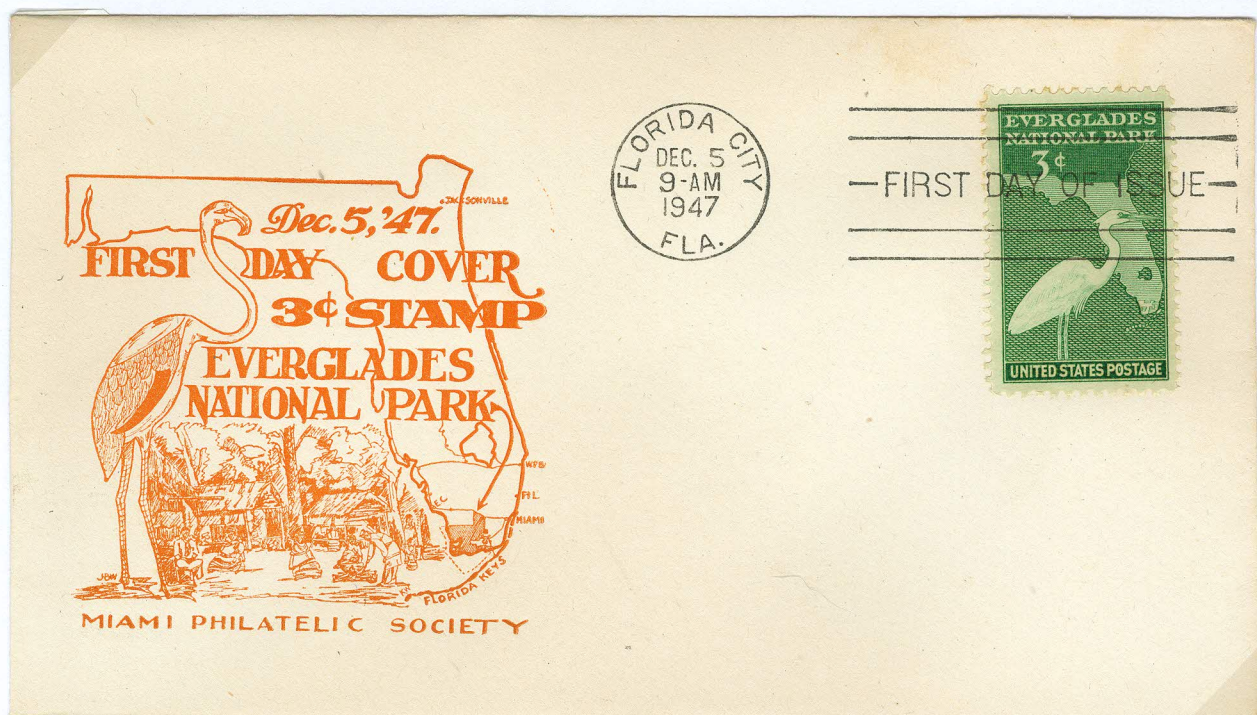
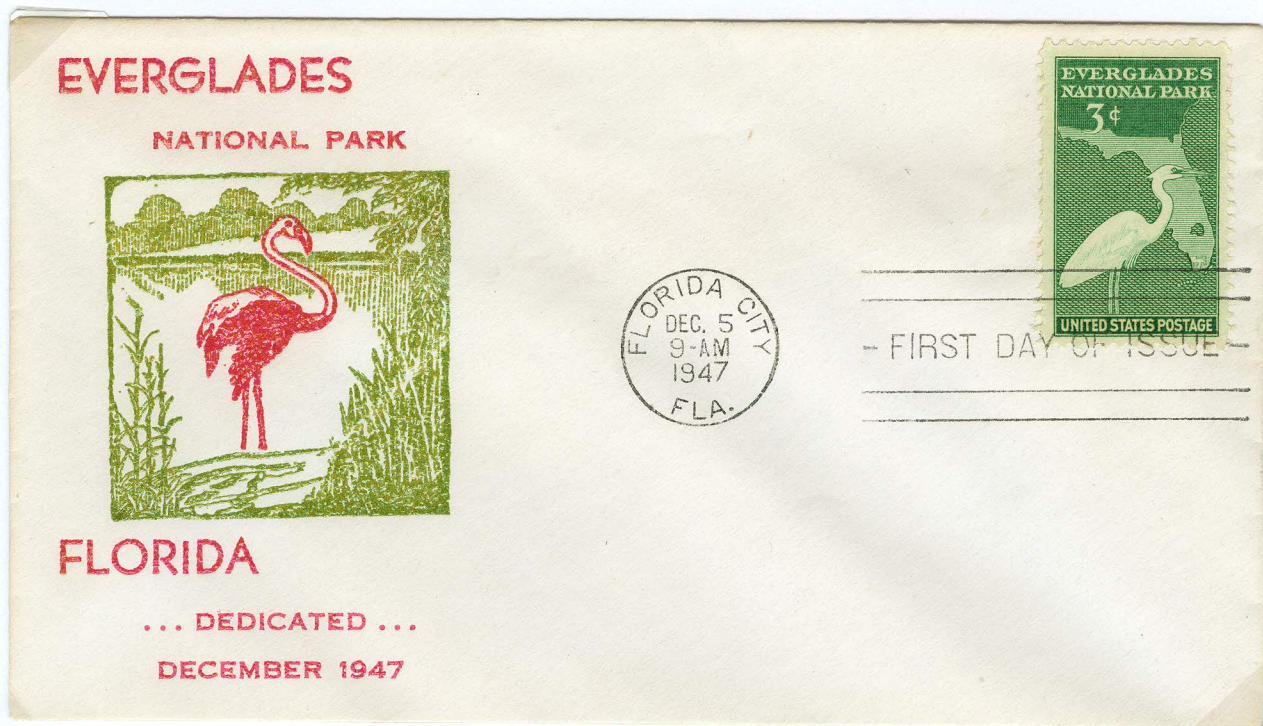
952 – 27 1st cachet of Artist Craft/Harvey - simple drawing in green of heron and palm tree.

952 – 1 M. Sanders – thermography done in two colors blue and green with heron and map of Florida.



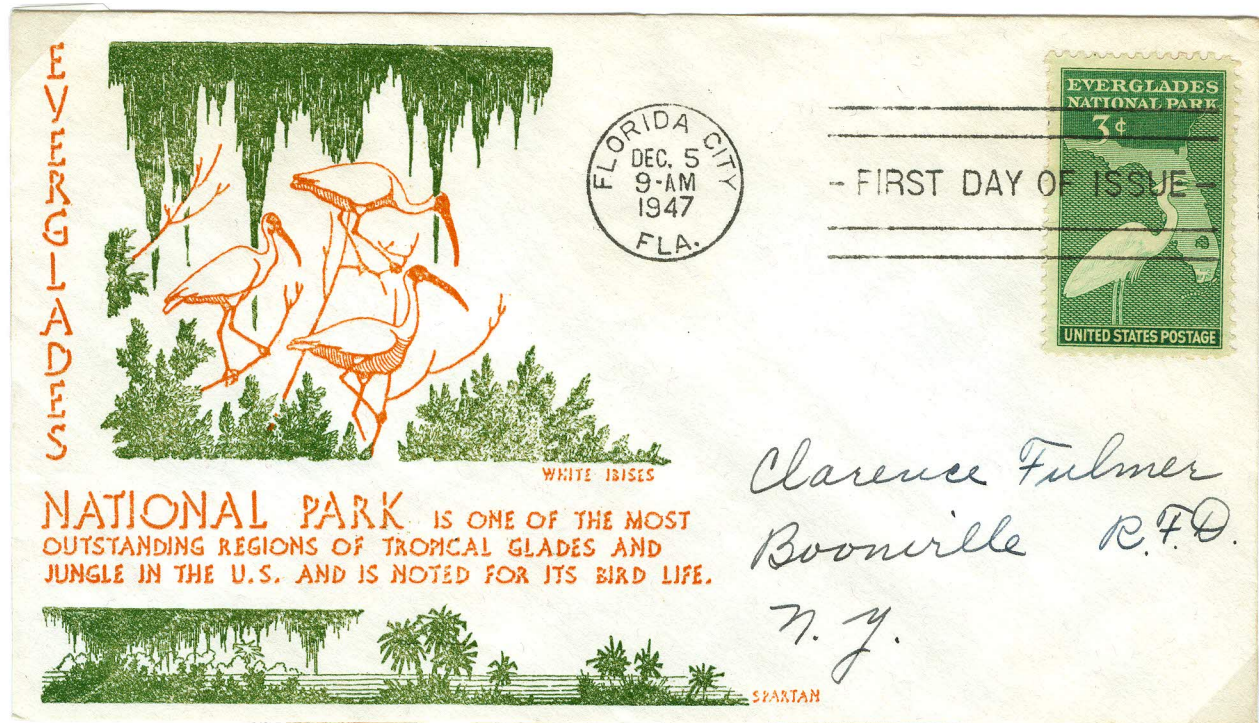
952 – 9 - Bronesky – Risko – two color pink and green printed by thermography. The color matches an attractive drawing of a flamingo.

952 – 11 – A 1st cachet by The Miami Philatelic Society – features a flamingo and Seminole Indian village in orange with a map of Florida and park noted by arrow.



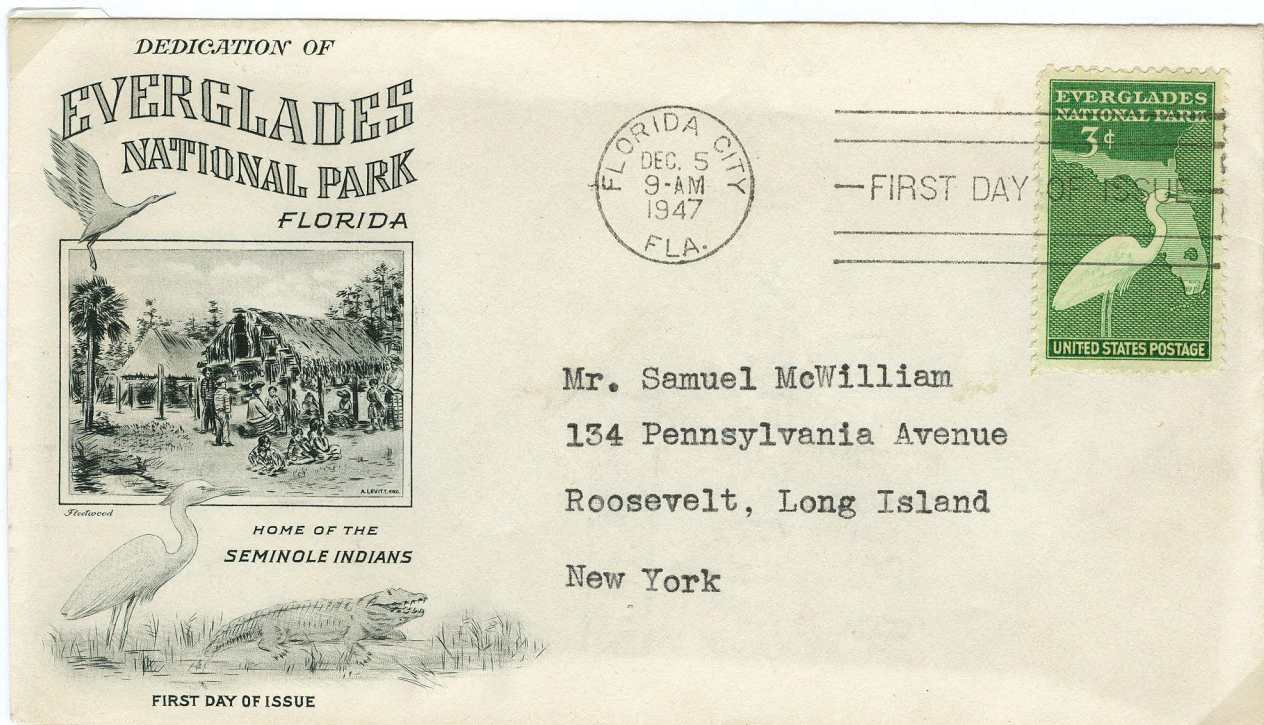
952 – 28 Spartan – a green and orange cachet printed by thermography that appears to be three wood storks although they are identified as white ibises. The wood stork is America's only stork and is larger than the white ibis and has black tips on its wings seen in flight. The ibises have de-curved bills and fly with neck extended as opposed to the egrets crooked neck.

952 – 13 House of Farnum – a thermograph in brown of an American alligator. The Everglades are the only location of the American crocodile.



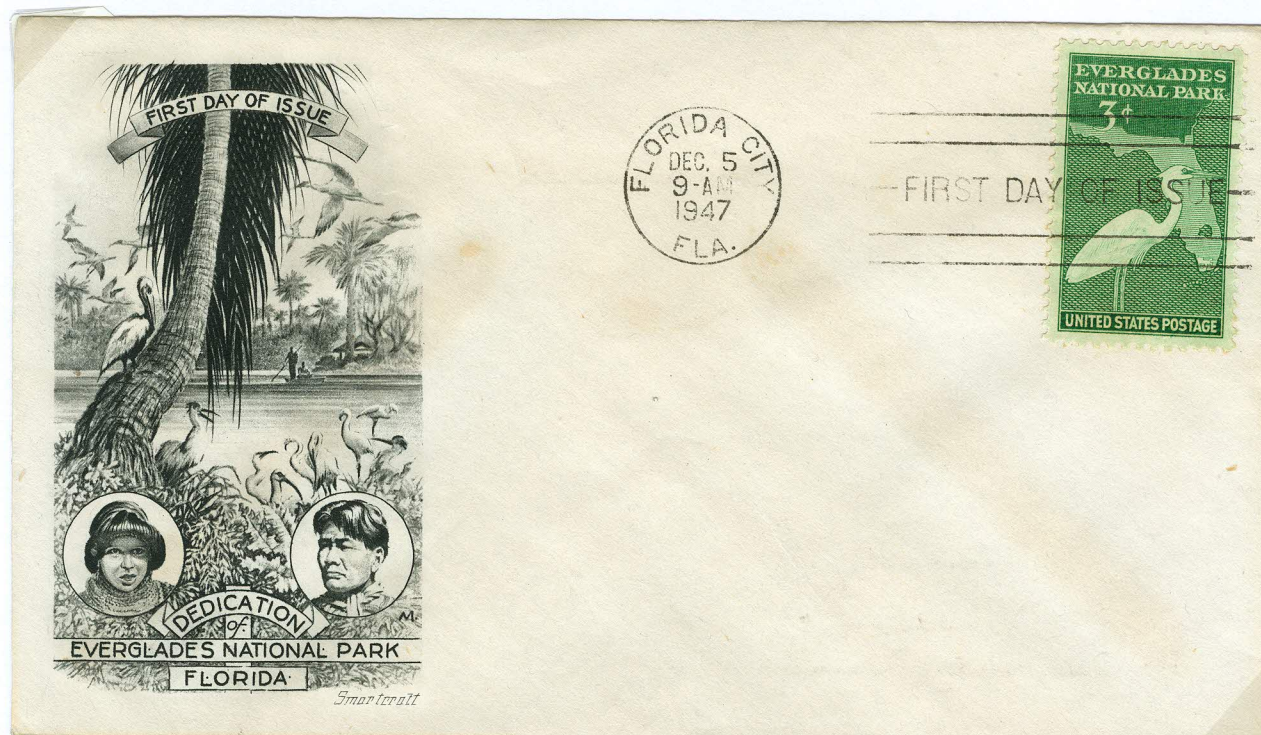
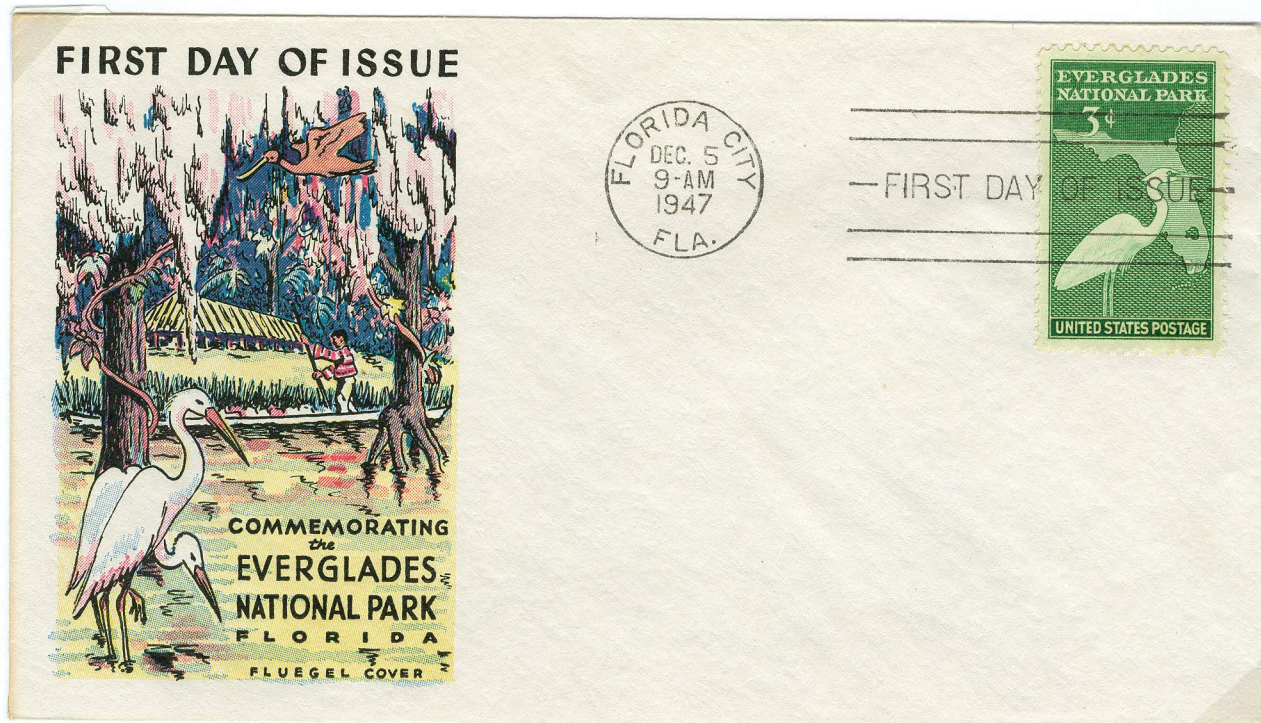
952 – 24 Artcraft – one of the longest lived, popular and common of the cachet makers. Cachet is a color representation of a Seminole and child spearing fish. Cachet also comes in black only.

952 – 37 Fleetwood – Another long serving cachet maker and mass marketer. The cachet shows an egret, alligator and features a Seminole **chikee**, also called a wickiup or wigwam. The Seminoles often had a second level with ground clearance to save from bugs and critters.



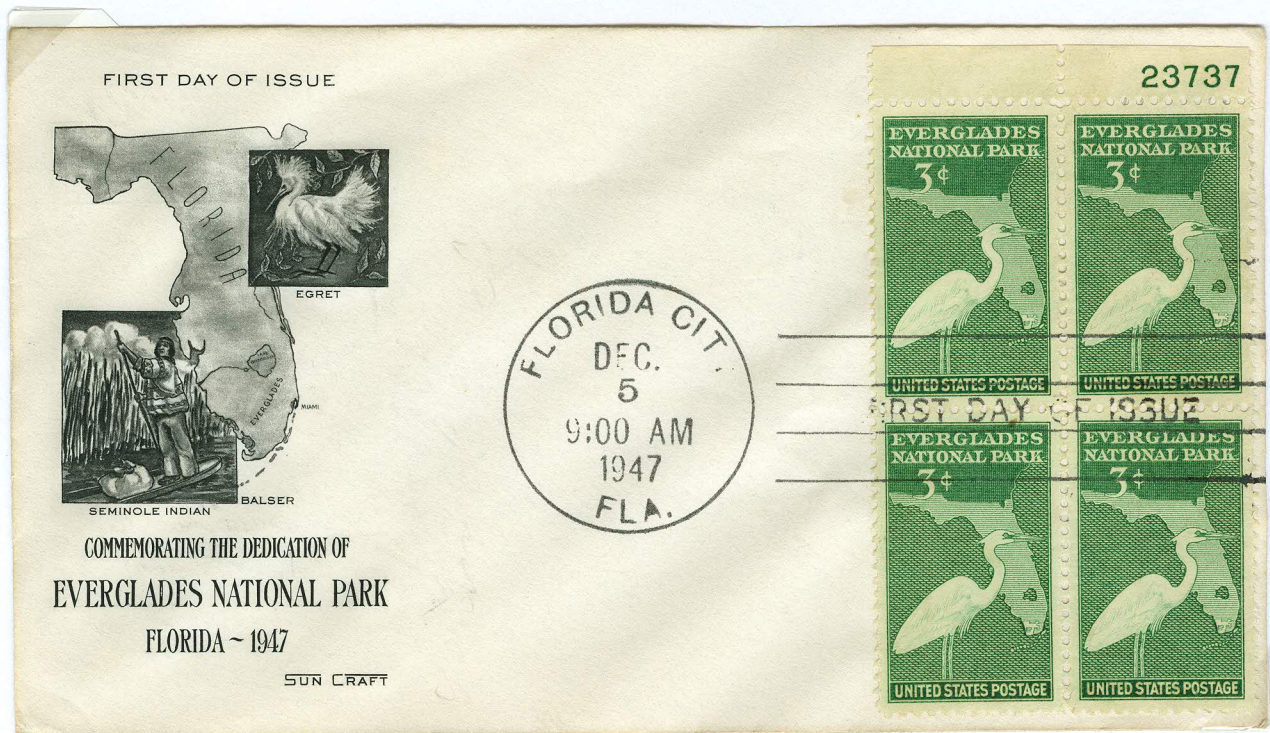
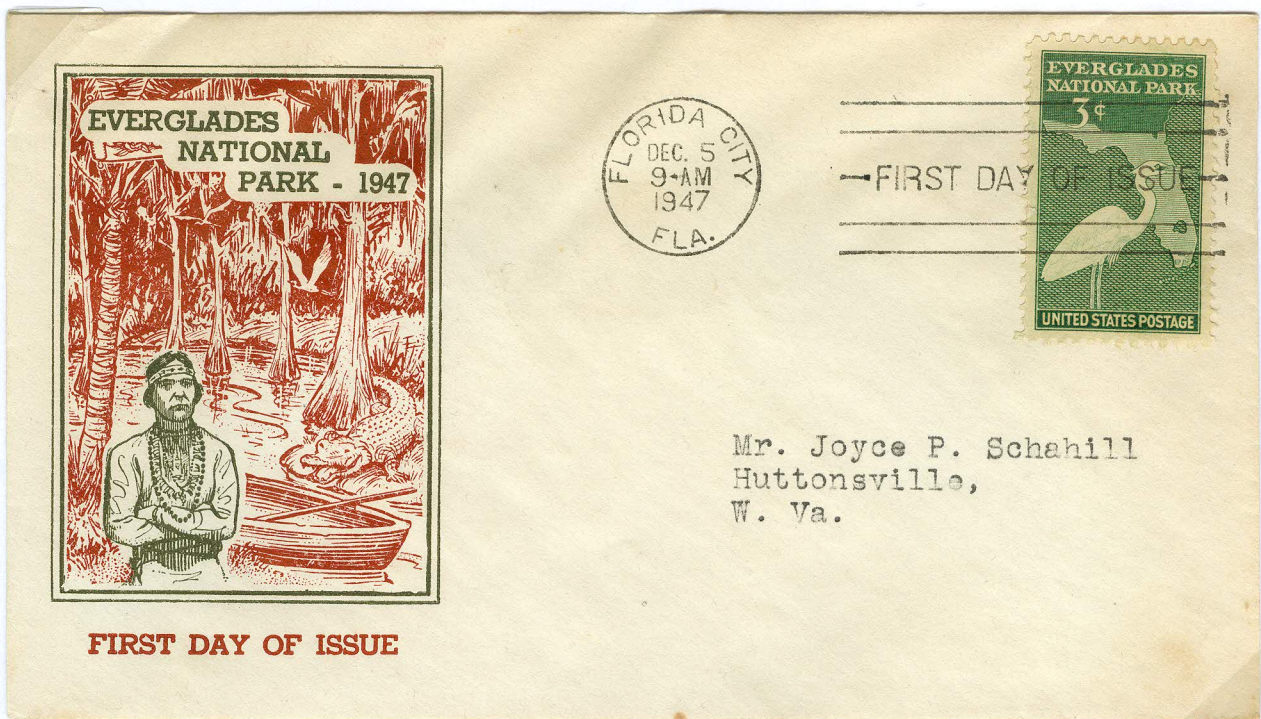
952 – 26 Fluegel – a colorful cachet by a popular maker, it features a Seminole, two egrets and a roseate spoonbill resting on a Cyprus tree.

952 – 12 Smartcraft – an intricate cachet that cries for color in that it has several representations of birds, a palm tree, lagoon, and headshots of a male and female Seminole in traditional haircuts and dress.



952 – 32 Fidelity Stamp Company – interesting portrait of a Seminole in a somewhat defiant pose with arms crossed. The smiling alligator looks much more friendly. It is printed in reddish and black but also exists in two color brown and orange and a third style in black only.

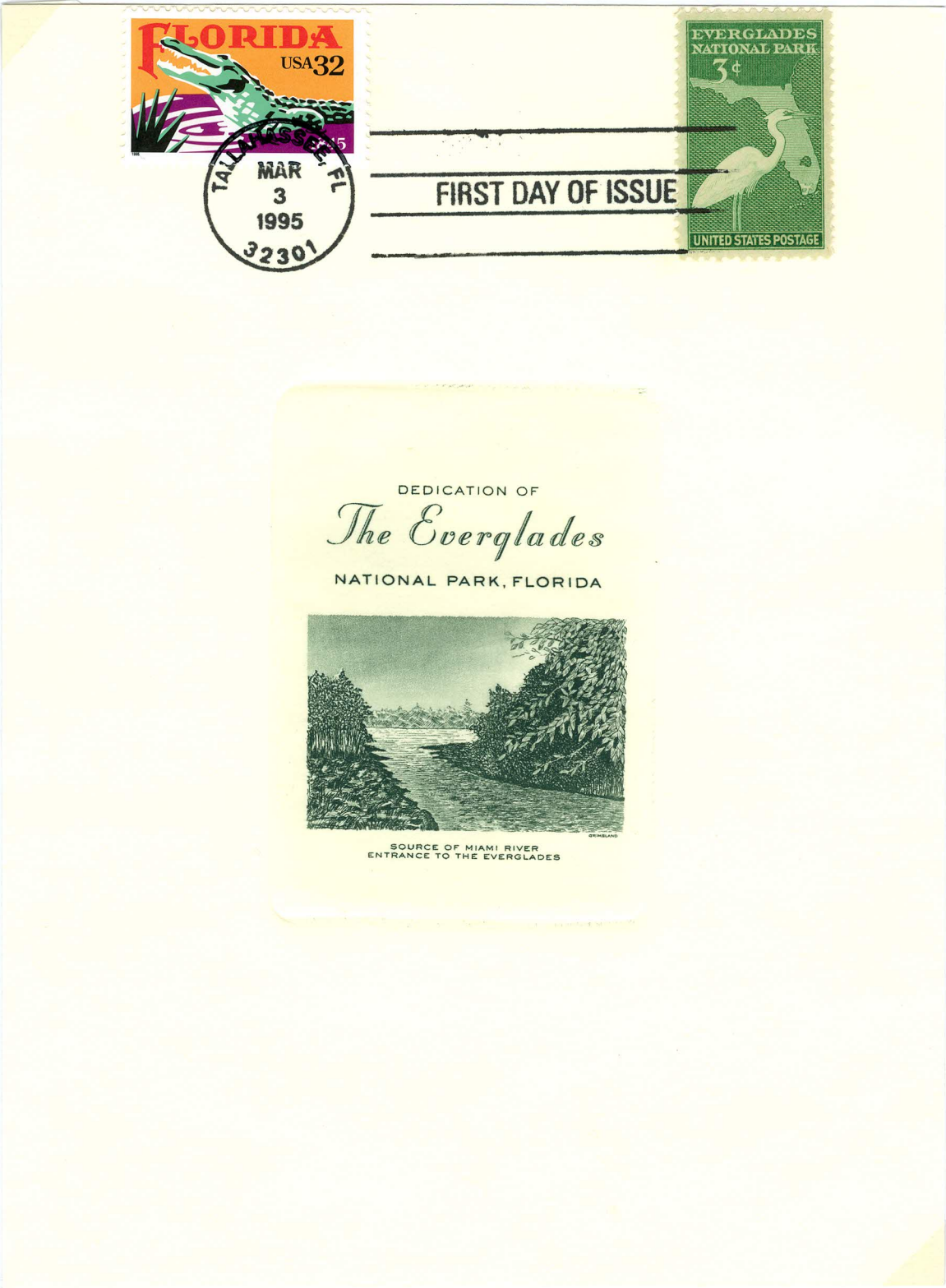
952 – 8 Suncraft – map of Florida, egret and Seminole Indian. At least the canoe is properly presented as a hollowed out Cyprus log unlike top cachet. Large circular cancel only seen in about one out of ten cancels.



952 – 3 and 952 – 4 Ken Boll / Cachet Craft – two different cachets created by the same person. The commonality is the map of Florida with the new park highlighted in green. The topcover features a squirrel, buck, alligator and what appears to be an attempt at a mallard duck. The lower cachet also has a buck, duck, and gator but only two colors green and brown and the declaration of Florida as “The Everglade State,” a very uncommon term used for Florida.



952 – 7 H. Grimsland – This unusual souvenir card is not of #952 but of Scott # 2950, the 32 cent 150th anniversary of statehood. However the cachet is from the original die produced by H. Grimsland in 1947. It now belongs to retired plate printer Mike Bean who worked at the Bureau of Engraving and Printing. He produced this souvenir card with his own “spider press” that presses the design into the card. This is a great tie-in with #952 and its Florida theme.



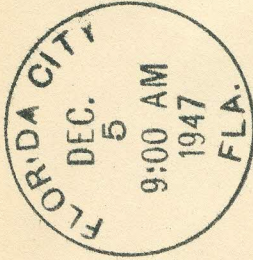
952 – unlisted - **Joseph O'Mahoney** was a New Deal Democrat who served as a senator from Wyoming from 1933 – 1953 and 1954 – 1961. He first came to Washington as First Assistant Postmaster General under James Farley in 1933. Why he sent this first day cover is a philatelic mystery. Since he was on the Committee on Appropriations, he may have had a hand in getting bills passed to establish the Everglades. With his short career as an Assistant Postmaster General, he may have learned how to use these covers as political favors. Regardless, it is a desirable usage. It also uses the less common large dial cancellation.

United States Senate

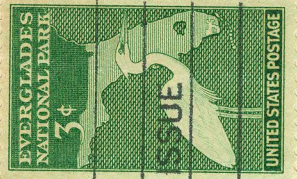
COMMITTEE ON APPROPRIATIONS

FREE

FIRST DAY COVER

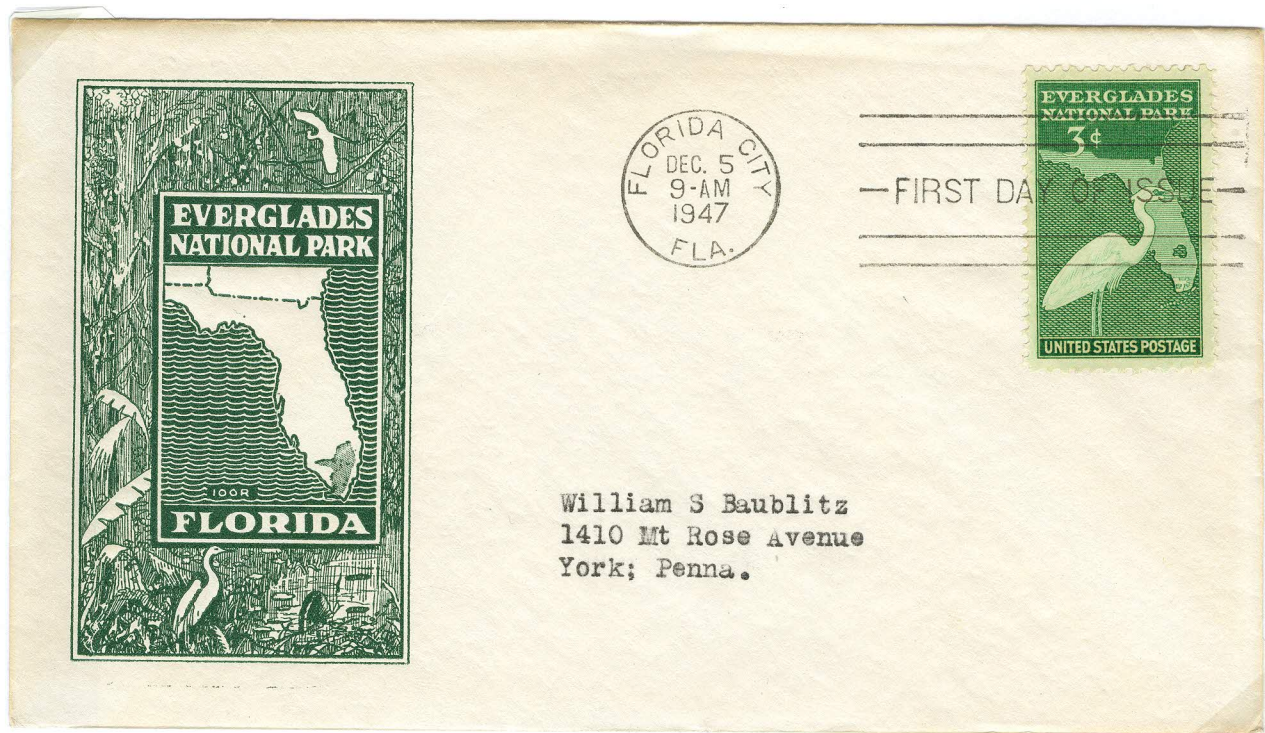


FIRST DAY OF



Everglades
U.S.S.

952 – 31 Harry loor – a simple green rectangular cachet with map, jungle and egrets from an “old line” cachet maker.



The Everglades National Park serves one million visitors a year but is home to some of the most endangered species in the United States. Americans can be proud of this saved environment.



INSTRUCTION OF THIRD ASSISTANT POSTMASTER GENERAL

3-CENT EVERGLADES NATIONAL PARK COMMEMORATIVE STAMP

The Department will issue a 3-cent commemorative stamp through the Florida City, Fla., post office, on December 5, 1947, to mark the dedication of the Everglades National Park.

This stamp will be 0.84 by 1.44 inches in dimensions, arranged vertically, printed by the rotary process in green, electric-eye perforated, and issued in sheets of 50 subjects.

The central design of the stamp is an outline map of the State of Florida showing the Everglades National Park area. In the foreground, and partly covering the map, is a great white heron, below which is a dark panel with the lettering "United States Postage" in white gothic. Across the top of the stamp, in two lines of white roman lettering, is the wording "Everglades National Park."

Stamp collectors desiring first-day cancellations of this stamp may send a limited number of addressed envelopes, not in excess of 10, to the Postmaster, Florida City, Fla., with postal note or money order remittance to cover the cost of the stamps to be affixed. **Postage stamps and personal checks will not be accepted in payment.** Envelopes submitted should be of ordinary letter size and each must be properly addressed. **Collectors should bear in mind that this stamp is vertically arranged and the address should be placed low on the envelope and as far to the left as practicable.** An enclosure of medium weight should be placed in each envelope and the flap either sealed or turned in. **An outside envelope must not be sent for return of first-day covers.** The envelope to the postmaster should be endorsed "First Day Covers." Collectors should refrain from requesting hand cancellations since covers will be machine canceled so far as possible. Orders for first-day covers to the Postmaster, Florida City, Fla., must not include requests for uncanceled stamps.

For the benefit of collectors desiring stamps of selected quality for philatelic use, the 3-cent Everglades National Park commemorative stamp will be available at the Philatelic Agency, Post Office Department, Washington 25, D. C., on and after December 8, 1947. To insure prompt shipment, mail orders to the Agency should include no other stamp issues. **The Philatelic Agency does not service first-day covers.**

Postmasters at direct and central-accounting post offices will receive an initial supply of the Everglades stamp on orders prepared in the Department. Therefore, postmasters at these offices will not submit requisitions for the same unless the initial stock is found inadequate, in which case proper explanation should accompany the requisition. **Direct and central-accounting postmasters are furnished commemorative stamps as fast as they can be manufactured. They are, therefore, requested to refrain from reporting the nonreceipt of shipments until a reasonable time has elapsed after the first day of issue.**

Postmasters at district-accounting post offices may obtain needed quantities of the Everglades stamp by requisition on the central-accounting postmaster.

Postmasters are cautioned not to place the stamp herein announced on sale before December 6, 1947.

THE POSTMASTER GENERAL
WASHINGTON
OFFICIAL BUSINESS



Penalty for prepayment of

FIRST DAY OF ISSUE



UNITED STATES POSTAGE

23736

Mr. James M. Bell
117 Hilltop Road
Silver Spring, Maryland