

FLORIDA POSTAL HISTORY JOURNAL

VOL. 6, NO. 1

MARCH 1999

CONTENTS

**Florida Stampless Postal History - 1763-1861
The Florida Postal History Society . . . 1**

**Florex 1999
Niles F. Schuh 2**

**Fort Jefferson Postal History
Gordon D. McHenry 3**

**Yellow Fever - How a Vicious Killer
Was Eradicated
William J. Hancock 12**

**Jacksonville to Syria in 30 Days
Edward R. Joyce 21**

**Florida Doane Postmark Update
Deane R. Briggs, M.D. 22**

FLORIDA POSTAL HISTORY SOCIETY OFFICERS

PRESIDENT -	NILES F. SCHUH
PAST PRESIDENT -	HERBERT P. McNEAL
VICE PRESIDENT -	DONALD G. THOMPSON
SEC. - TREASURER -	DEANE R. BRIGGS, M.D.
JOURNAL EDITOR -	DEANE R. BRIGGS, M.D.
REGIONAL EDITORS -	NILES F. SCHUH
	THEODORE LIGHT
	HERBERT P. McNEAL

Membership applications may be obtained from Deane R. Briggs, M.D., 160 E. Lake Howard Drive, Winter Haven, FL 33881, phone: (941) 299-1251, fax: (941) 299-7666, e-mail: drb@gte.net

Articles may be submitted for publication to Deane R. Briggs, 160 E. Lake Howard Dr. Winter Haven, FL 33881

FLORIDA STAMPLESS POSTAL HISTORY

by: The Florida Postal History Society

Our Society's long four year project is now complete and our book *Florida Stampless Postal History 1763 - 1861* is going to press. Editor Deane R. Briggs and Associate Editors Herbert P. McNeal, Niles F. Schuh, and Donald G. Thompson have spent untold hours compiling the first comprehensive text on this subject. Brief historical essays on the Patriot's Rebellion and Cession of East Florida, the West Florida Republic, Postal history of West Florida, Seminole Indian Wars, and the Express Mail usages of Florida (1836-1839) give the reader a taste of early Florida postal history.

The book includes a brief history of each Florida town which had a post office established before the onset of the Civil War. Statistical data including a listing of all postmasters, with date of commission, actual postmaster compensation, and post office receipts are recorded. A listing of all post offices by County with dates of establishment and discontinuation, postal routes and contractors, along with a listing of all known Seminole War Forts makes for a ready reference source.

The most important aspect of this book is a complete listing of all known "stampless" postal markings, handstamp rates and ancillary markings recorded and reproduced in actual size. A listing of all known examples of manuscript postmarks helps the reader determine scarcity. Archival examples not known to be duplicated in private collections are recorded and documented for completeness.

This book is published by David G. Phillips Publishing Co., Inc. and will be available this summer well before FLOREX. The book will be Soft Bound (special Otabind lay flat binding) will retail at \$45.00. As a member of The Florida Postal History Society, you are entitled to a **special pre-publication offer** fully **30%** below retail at **\$31.50** postage paid. Please take advantage of this offer before May 15, 1999. After this date, all orders must be made through David G. Phillips Publishing Co., Inc. See the enclosed order form.

FLOREX 1999

It has been announced that FLOREX 1999, the APS stamp show sponsored by the Florida Federation of Stamp Clubs, will be the last FLOREX. This means that this will be the last time our Society will hold its annual meeting at FLOREX.

As a special incentive for members of our Society to attend this, the last FLOREX, The Florida Postal History Society has been extended an offer to exhibit a 15 frame **Court of Honor** exhibit of "**Florida Postal History**". This exhibit is going to be a joint effort of our Society and all members with interesting examples of Florida Postal History are encouraged to submit a photocopy of such covers to Deane R. Briggs, M.D., 160 E. Lake Howard Dr., Winter Haven, FL 33881. phone: (941) 299-1251. He and fellow members Donald G. Thompson, William H. Johnson, D.D.S., Herbert P. McNeal, and Niles F. Schuh, will select the examples to be shown. This means that up to 240 pages (potentially 480 covers) of great Florida material from various collectors will be shown for the first time as one exhibit. This is a unique concept and hopefully, our Society members will join in and support this project. **Please submit at least one cover.**

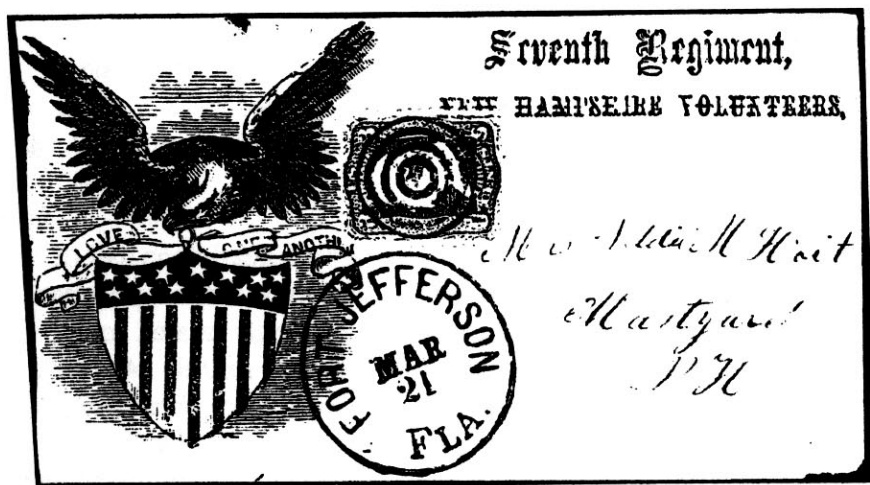
Please look at your collection and submit any nice examples from areas such as stampless, confederate, 19th century adhesive usage including #1, #2, #10, #11, banknotes, postmaster or county postmarks, 20th century usages, RPO, RFD, machine cancels, advertising covers, military covers, perfins, fancy cancels, Doanes, 4-bars, etc. The purpose of this exhibit is to reflect the entire gamut of Florida Postal History. **Please participate in this exhibit.**

As this FLOREX will be the last one, the Florida Postal History Society will hold its last annual meeting there on Saturday, November 6, 1999, at 12 noon. The by-laws will need to be amended, with the annual meeting to be held at the Sarasota National Stamp Exhibition in future years. **Please plan to attend our Annual Meeting at FLOREX.**

Niles F. Schuh, President

FORT JEFFERSON POSTAL HISTORY

Gordon D. McHenry



Fort Jefferson is located on Garden Key in the Dry Tortugas about 65 miles West of Key West, the last eight in a long string of coral islands, or keys, that extend westward from the tip of Florida into the Gulf of Mexico. They were originally named Las Tortugas in 1513 by Juan Ponce de Leon because of the numerous tortoises. Later the Dry was added because of the lack of fresh water.

In the early 19th Century it was felt that the Dry Tortugas were in such a strategic location that a fort constructed there could protect against marauding pirates as well as Spain's corsairs and eventually could control navigation in the Gulf of Mexico. In 1825 a lighthouse was built in Dry Tortugas and in 1846 construction began on Fort Jefferson as part of a chain of U. S. seacoast defenses from Maine to Texas. This fort was to be the largest, covering most of the 16 acre Garden Key. It was a massive hexagonal structure with walls 8 feet thick and 50 feet high, with 450 gunports. It was one half mile in perimeter and required 16 million bricks. Artisans imported from the North and slave labor made up the work force. It is interesting to note that slave labor was

used by the Union forces right up to 1863. Work on Fort Jefferson continued for 30 years, although the fort was never totally completed.

In order to prevent the fort from falling into Confederate hands, it was hastily occupied by Federal troops in January 1861. The Union Army decided early in the conflict that Fort Jefferson was to become a military prison for Union prisoners only. Prisoners of War were never housed there. The first contingent of prisoners arrived in 1861 and a post office was established on October 28, 1861 with Horace Brooks as the first postmaster.

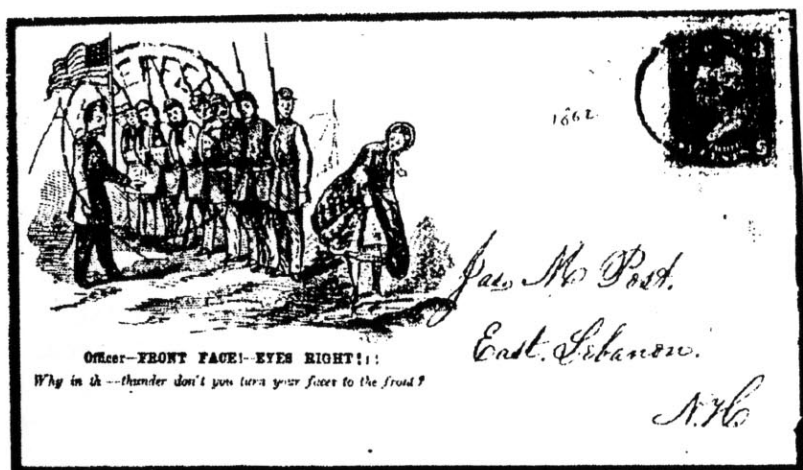
There were at its peak about 1,400 men in the fort, nearly one half of them prisoners, most of whom were black. The most famous prisoner was Dr. Samuel Mudd, the physician that unknowingly treated John Wikes Booth. He was incarcerated at Fort Jefferson on July 24, 1865. In August 1867, yellow fever broke out and spread throughout the entire prison. Dr. Mudd attended those afflicted during the entire period of the epidemic, saving many lives, but he was not pardoned and released until 1869.

George Phillips replaced Horace Brooks as postmaster on November 27, 1861 and the county name changed from Santa Rosa to Monroe County. George T. Jackson became the third postmaster on September 1, 1865. The post office was briefly discontinued on March 8, 1867, but reestablished on August 15, 1867 (about the time of the onset of the yellow fever epidemic) with George T. Jackson continuing as postmaster. The Fort Jefferson post office was officially discontinued on October 27, 1868 with mail handled by the Key West post office. A Tortugas post office was established at the site of Fort Jefferson on December 1, 1899 and later discontinued on November 30, 1907. All mail since 1907 from Fort Jefferson has been handled by the Key West post office.

The Fort Jefferson post office used only one handstamp postmarking device during its duration, namely a large slightly oval 35 x 33 mm. cds with FORT JEFFERSON in non-serif letters, and FLA. and the month and day date in serif lettering. Most surviving covers have quite bold postmarks, with black being the most common ink. Red and rarely blue

ink postmarks are known. All known covers have adhesive stamps with the 3c 1861 (#65) being most common. Stampless usage is not recorded. Cancellations include manuscript pen cancels, PAID in circle, target, grid, and rarely wedged killers. A DUE 6 in circle handstamped rate is known on an underpaid triple rated cover.

The following are several examples of covers posted at Fort Jefferson, some with interesting contents:



**FORT JEFFERSON / FLA. MAY 11 (1862) usage on
"Officer - Front Face! - Eyes Right!" patriotic cover**

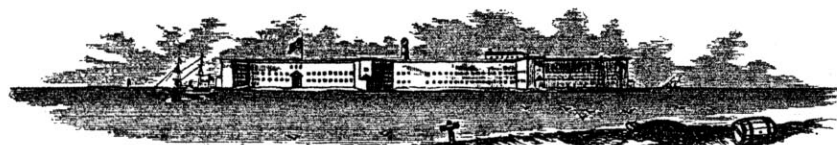
The enclosure from the above cover was written by a member of the New Hampshire troop contingent and reflects his highly optimistic opinion as to the quick outcome for "this rebellion".

Tortugas, Florida
Fort Jefferson, May 13th [1862]
Friend "Madison"

It is some time since I have written to you but I have delayed it so long I hardly know why myself. I have been troubled by the sore eyes for about a fortnight or three

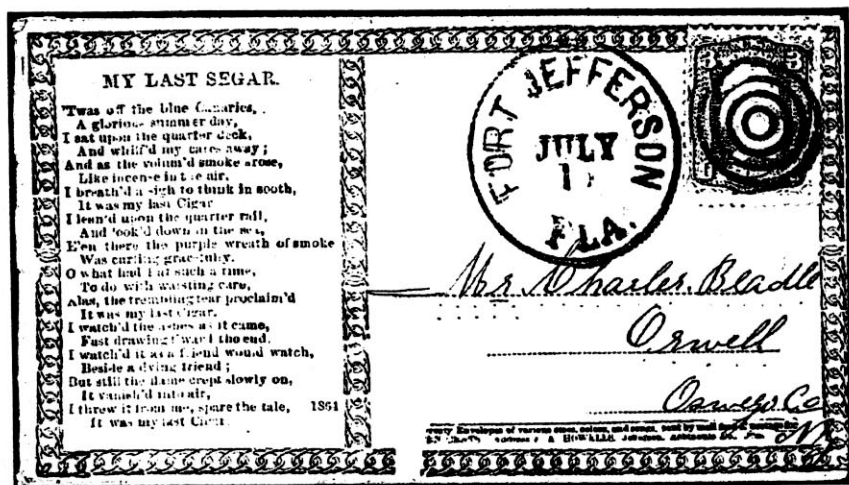
weeks so that I have not written hardly any of late to any one. My mother writes you are having quite a freshet up there. The old dam and bridge came pretty nigh going did they not? It done considerable damage to the Northern RR, washing of their Bridge between your place and Lebanon Centre &c. We get cheering news here from the war. We thought we had got Bully news when we heard that Island No. 10 was taken but after that came the news of the taking of New Orleans & today we got the news of the evacuation of Yorktown. We had expected the Rebels to show fight there but they are either afraid or daresent, I do not know which. We are some expecting we shall leave here soon. Our Regiment has been placed in Gen. Hunter's Division and his head quarters is at Port Royal & the men are in hopes we shall be ordered to South Carolina for they have got to have more troops when they take Fort Sumpter and they will come out of Gen. Hunter's Division. They do not need a Regiment here no more than nothing & there is 3 Regiments at Key West and they do not need more than one. So I do not think we shall stay here forever. This rebellion must be pretty nigh its end, don't you think so? I have intended to write to Harlan all along but haven't found the time yet. Well it won't be healthy to write any more this time so good day. Write and give all the news.

Yours Truly
Everett W. Miner



Fort Jefferson, Tortugas, Fla., - Nov 8th 1864

Fort Jefferson letterhead Nov 8th 1864



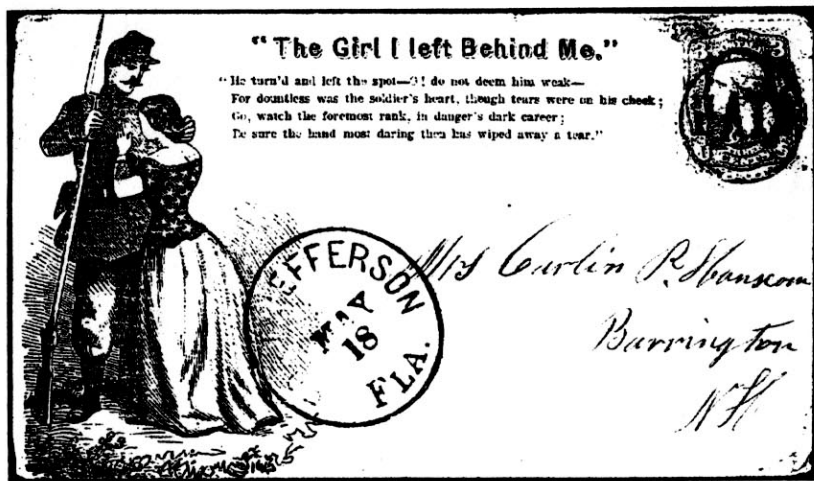
**FORT JEFFERSON / FLA. JULY 10 usage on
"My Last Segar" patriotic cover**



**FORT JEFFERSON / FLA. MAR 11 usage on
New York state patriotic cover**



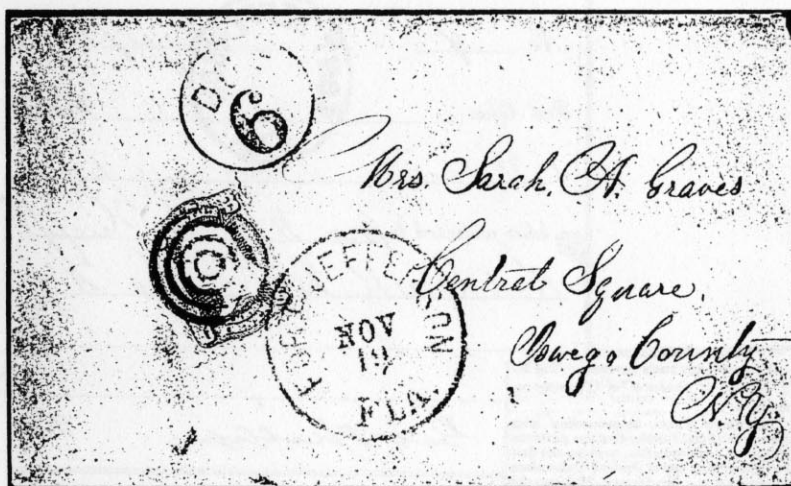
FORT JEFFERSON / FLA. APR 2 usage on unusual patriotic cover



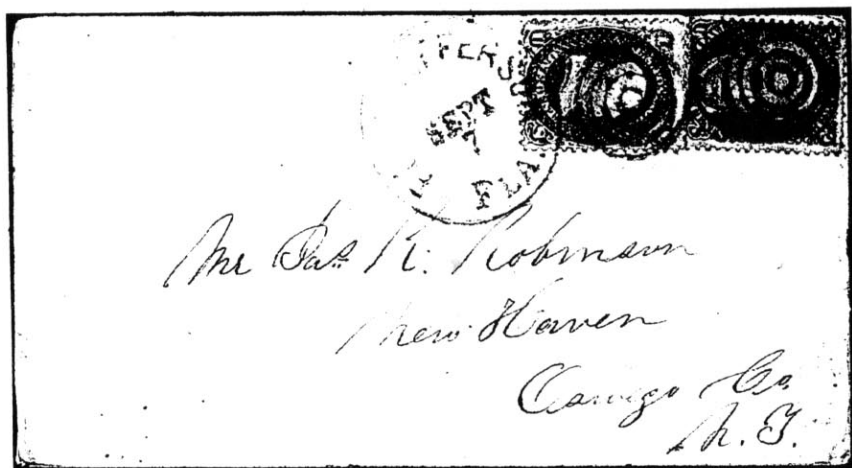
FORT JEFFERSON / FLA. MAY 18 usage on "The Girl I left Behind Me" patriotic cover



**FORT JEFFERSON / FLA. MAY 5 usage on
 "The Soldier's Dream" patriotic cover**



**FORT JEFFERSON / FLA. NOV 19 usage with #65,
 underpaid triple rate with DUE 6 handstamped rate**



FORT JEFFERSON / FLA. SEPT 7 usage with #63, #73

REGISTERED LETTER.

No. 19

Post Office FORT JEFFERSON FLA Received Sept 7 1865

of William H. Phillips

a letter addressed to Geo. Phillips
New York

Geo. Phillips P. M.

A REMITTANCE FROM SECESSION. The N. Y. Journal of Commerce of Thursday remarks; it is worthy of note, in connection with the news from Florida, that the Assistant Treasurer received, this morning the first remittance from any of the Gulf States, since their accession. Mr. George Phillips, the Postmaster at Fort Jefferson, Florida, has forwarded \$77, this being due the government for receipts in his department.

FORT JEFFERSON / FLA. undated postmark used on Registered Letter receipt with Geo. Phillips p.m. frank



GEORGE C. WALES,

PEARL STREET,

BOSTON, MASS.

FORT JEFFERSON / FLA. MAR 31 cover with #26
(stamp added) usage as p.o. not established until Oct. 28, 1861

*Registered
from
Brown
Tortugas, Fla.*



Chas. A. Townsend,

Akron,

Ohio.

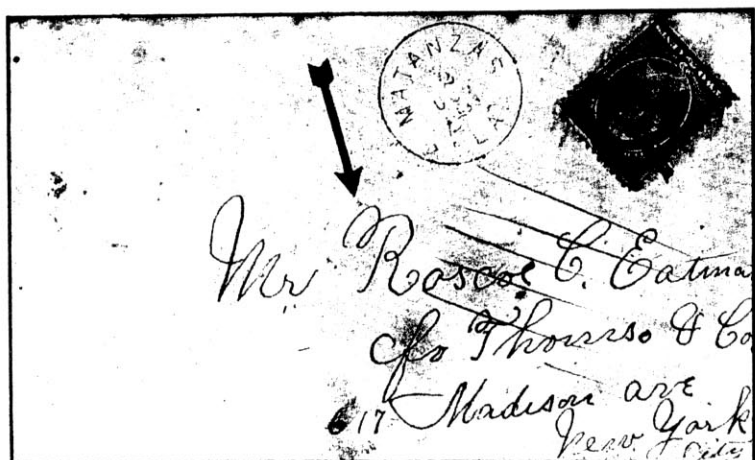
*no 75
75*

TORTUGAS / FLA. NOV 16 1901 usage
with #254, #298 on registered cover

YELLOW FEVER

How a Vicious KILLER Was Eradicated

William J. Hancock



MATANZAS / FLA 2 OCT 1888 cover with fumigation holes

It was a hot and humid midsummer night in 1764 - nearly two centuries ago - when a Pensacola physician received an urgent summons to a waterfront home where a man was critically ill. The doctor examined the patient, gave him a dose of bark and wine, prescribed tamarind water and paregoric. He advised the patient's wife to keep him well wrapped and said, "The moment his fever breaks, send for me." "But what is it doctor?" the wife asked. The physician shrugged. "We're not positive," he said. "It is some kind of a bilious, remittent fever. It seems to be spreading." In the morning, the patient was dead. No one, not even the doctor, knew it, but Yellow Fever had invaded Florida.

During the next 140 years, the vicious, unpredictable "Yellowjack" was to take the lives of thousands of men, women and children in Florida, incapacitate thousands more and upset the economy of the entire state. Sporadic outbreaks of this strange disease occurred that summer in most parts of the state and fear of the mysterious fever in Florida

became as disturbing as today's international Aids threat.

But it is a foul wind that blows no progress. Because it was Yellow Fever, together with the determined efforts of a dynamic Key West physician and many of his colleagues that ultimately led to the establishment of the Florida State Board of Health and eradication of the disease in Florida in 1905, when the last five cases were entered on the public health records.

Researchers are still unsure as to who first discovered that the mosquito, *Aedes Aegypti*, was the transmitter of Yellow Fever; Carlos Finlay, of Cuba, who had a reputation of being "queer and impractical", Doctor Walter Reed, who discarded the idea that the disease was transmitted by "fomites" and upheld the mosquito theory, or Doctor Joseph Y. Porter, of Key West, who, for the first time, gave a practical demonstration in the United States that *Aedes Aegypti* was the villain. Regardless, Florida played a vastly important role in the eradication of Yellow Fever in many parts of the world, largely through the efforts of Doctor Porter.

After the epidemic of 1764 in Pensacola, there was apparently a period of quiescence. It was not until 1874, 110 years later, that Yellow Fever again lashed furiously at Pensacola, and 354 of the 1400 residents who remained in the community died. Three years later, in 1877, "Yellowjack" struck ruthlessly at Fernandina, where 1,500 of the town's 1,600 residents were stricken and hundreds died. The town of Key West became the next target of this prowling killer. In 1888, hundreds were smitten and death carts rattled noisily over the cobblestones.

Then a paralyzing epidemic struck Jacksonville that same year. On the night of July 28, 1888, a businessman by the name of R.D. McCormick, of Plant City, came to Jacksonville by way of Tampa and checked in to the Grand Union Hotel. He was ill upon arrival. Doctor Porter, who happened to be visiting friend in Jacksonville at the same time, went to McCormick's hotel bedside. He had seen enough of Yellow Fever in Key West to be instantly alarmed and he called into consultation Doctor C.J. Kenworthy, Jacksonville's health officer, and Dr. Neal Mitchell. They all agreed that "Yellowjack" had come to Jacksonville.

Now the bug went berserk. People collapsed in the streets, in hotel lobbies, and across the mahogany bars at Togni's and at Farenback's, the city's most popular taverns. Hotels closed. Stores boarded up. Social activities ceased. People panicked. Nearly 10,000 persons were evacuated to Georgia and the Carolinas. Jacksonville became a veritable ghost town, and of the 5,000 odd people who remained in the city, all of them contracted a fever and more than 400 died. The city's borders were guarded by armed men on horseback and afoot, waving yellow flags. Only those who had pass cards issued by Joseph Foster, surgeon in charge of government relief measures for Florida, were permitted to cross the borders and none could enter Jacksonville without proper authorization.

It was commonly believed that Yellow Fever was caused by "fomites" which multiplied in clothing and bedding. Someone started spreading the rumor that these "fomites" or germs, even came through the mail. Government authorities, now thoroughly alerted to the menace of panic, took quick action. Elaborate fumigation systems were established in boxcars on sidings near Waycross, Georgia, and at points near Baldwin and Orange Park. Newspapers and letters, their wrappers and envelopes loosened, were spread out on chicken wire which was strung the length of the cars. Sulphur pots were ignited and the car doors sealed for several hours. Envelopes were perforated with two blows of a wooden mallet studded with eight nails on the theory that the sulphur fumes would permeate and destroy the "fomites". More than two and one half million pieces of mail were fumigated at Waycross. Every day, the floor of the Jacksonville post office was sprinkled with carbolic acid.

Meanwhile, the story circulated that some Negro families had managed to escape the fever by igniting small amounts of gunpowder in their one-room homes each night to kill the "fomites". This gave rise to the "concussion theory" and at seven o'clock on the night of August 14, 1888, fifty rounds of ammunition were fired in the city's streets by three cannons. The practice was short lived. The vibrations broke windows, shattered lamps and mirrors and further disturbed the sick and dying. And the death rate did not drop.

Ironically, about the same time, Carlos Finlay of Cuba was advocating a campaign to destroy mosquitos which, he maintained, transmitted Yellow Fever. His idea was generally ridiculed but not by everyone. Walter Reed, a member of the Medical Corps of the U.S. Army, who had succeeded at the age of 37 in uncovering new evidence involving the cause of Typhoid Fever, was preparing to focus his attention on Yellow Fever. He agreed with Finlay.

On Thanksgiving Day, November 29, 1888, the people of Jacksonville had cause for offering thanks because toward evening, the thermometer began a rapid descent, and by dawn, there was a freeze. In less than forty-eight hours the entire atmosphere of the fever-ridden city had changed. On December 1, the FLORIDA UNION ran an editorial which read in part: "Bay Street was astir bright and early, the boys pulled down the store shutters with brisk vim, every storekeeper stepped cheerily along the sidewalks; even the horses and wagons, omnibuses and mule carts dashed along the hardened ground with exhilarating impetus, and people greeted each other with hearty congratulations and a jolly 'good morning'".

The epidemic was over! But Florida's political leaders and health experts knew too well that nothing had been accomplished to prevent a recurrence. Foremost among these was Doctor Porter, better known among his close friends as "Big Joe". Doctor Porter, firmly convinced that poor sanitation and Yellow Fever were first cousins, raised a rumpus in Jacksonville that resounded throughout the state. He referred to Hogan's Creek, between Market and Pine Streets, as a "open sewer". He criticized garbage disposal methods, dirty streets, slum conditions and demanded that the state legislature take steps to prevent another epidemic. He even indicated that Carlos Finlay's mosquito theory bore considerably more weight than cannonball explosions.

Some criticized Porter harshly as a cranky do-gooder. A few newspaper editors took a crack at him for hurting Florida's slowly developing tourism. Others took him with a grain of salt, but not Governor Francis P. Fleming, who, after reading some of Doctor Porter's reports and criticisms, called a special spring meeting of the

legislature on February 5, 1889, to establish a State Board of Health "for promotion of controls in case of a repeat epidemic".

On February 20, approval was given a bill for a three member health board. Governor Fleming selected Doctor Richard P. Daniels, of Jacksonville, as president. The other two members were William B. Henderson, of Tampa, and William K. Hyer, of Pensacola. Almost immediately, these three chose Doctor Porter to serve as State Health Officer and Executive Secretary. Doctor Porter served with the State Board of Health for 28 years, retiring in 1917, at the age of 70. His "retirement" aroused many a chuckle because that same year, the Army Medical Corps appointed him to active duty at Camp Johnson in Jacksonville, and the people of Monroe County elected him as their representative in the legislature.

Doctor Porter's theories of health education spread throughout the state and even into the school rooms. Even as former Mayor LaGuardia of New York followed fires, Doctor Porter kept hot on the tail of Yellow Fever and it was during another epidemic in Pensacola in 1905, that he demonstrated, for the first time in the United States, that the *Aedes Aegypti* was the transmitter of the disease. This was the last year that the fearful killer on the prowl, Yellow Fever, was reported in Florida.

The Yellow Fever carrying mosquito has long since been eradicated from the entire United States, a fact for which everyone of us should be grateful. It is one of life's ironies, however, that a pestilential mosquito was indirectly responsible for the establishment of an agency that has been saving and protecting Florida lives for decades, the State Board of Health. Important to remember, however, is that although the mosquito created the challenge, it was pioneers like Doctor Joseph Y. Porter who rose to meet the challenge, and who have earned the thanks of mankind.

The following covers and letters are examples of those "fumigated" by the U. S. Post Office. The arrows indicate the holes punched in the envelopes by postal employees. When the Freedom Train arrived for a visit to Orlando in 1976, the postal car exhibit had on exhibit, one of the tools used to cut holes in envelopes. Most observers would not

have recognized the tool for its purpose.

Roscoe C. Calverton,
Stella Calverton,
Matanzas, Cuba
Sept 27-30,
Oct 1, 1888

To My Dear Brother
from your true and
loving sister
Stella

My dear Brother
I thought I would write you a few
lines and tell you a little news as I did not have
any thing to do, it is Sunday night and we are
all sitting around the fire it is cold down here I
guess it won't be cold here yet it is a little cool
well this leaves us all well and I hope this will
find you the same well Chod & trigger came
down Saturday but she is going back soon
she says 2.00 and trigger says 1.75 - but he is as
big as a giant
Papa & Ma & Jessie and my self are going down
to San Juan de los Rios + ...

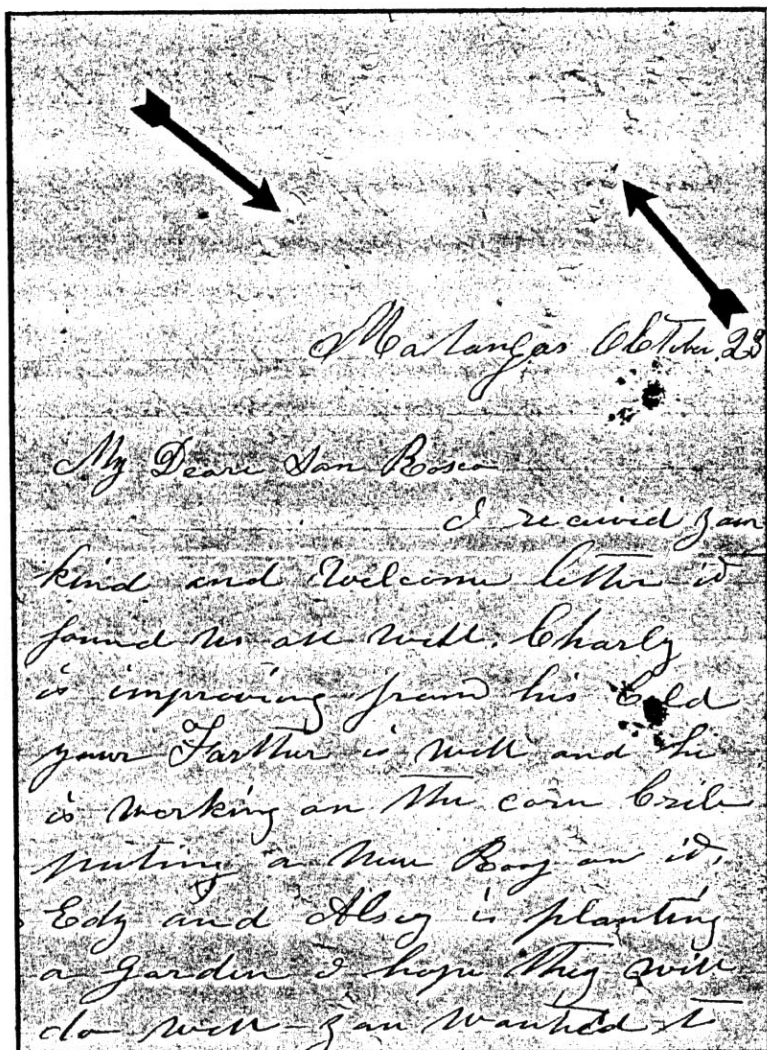
enclosure from Matanzas Oct 2, 1888 cover showing
fumigation holes

Haines City Fla. Oct 21st 1888

Dear Mother

Yours of the 14th received.
It was not punched. Ella still con-
tinues sick. For the last two or three
days she has set up a little but
is not able to do any work she is
so weak from want of proper food.
For the last two weeks none of us
have eaten anything but biscuits
and coffee. I have been busy at
chivalys clearing so that I could
not go farther. We used the last
of our coffee this morning and have
flour enough for about two days more
and not a cent or the prospect of
one. I am getting so weak that
I can't do half a days work.

enclosure from Haines City Oct 21, 1888 cover with
clear fumigation holes and "Yours of the 14th received.
It was not punched."

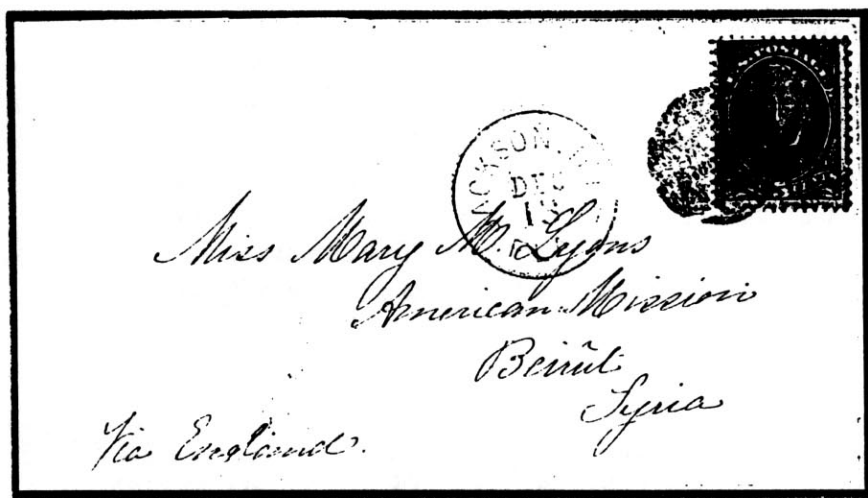


enclosure from Matanzas Oct 23, 1888 cover
showing fumigation holes

Editor's Note: This article was presented by member William J. Hancock, at the annual meeting of the Florida Postal History Society on November 7, 1998. Readers are also encouraged to re-read member Herbert P. McNeal's article on Fumigation Covers in the Florida Postal History Journal, vol. 1, no. 1, July 1993, issue.

JACKSONVILLE TO SYRIA IN 30 DAYS

Edward R. Joyce



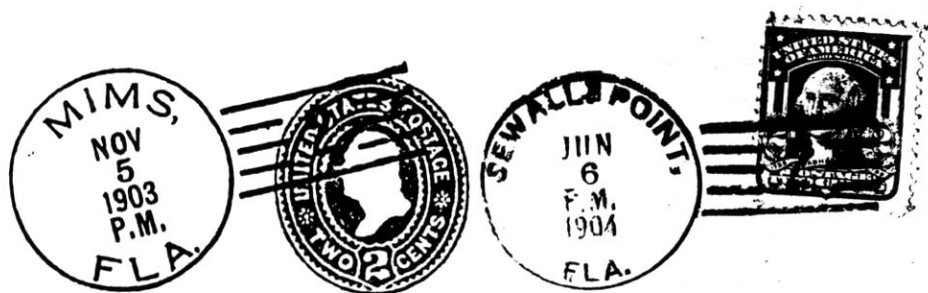
JACKSONVILLE / FLA DEC 13 (1878) cover to Syria

This cover was postmarked "JACKSONVILLE / FLA DEC 13 (1878)" and addressed to a lady at the American Mission, Beirut, Syria, sent via England. On the reverse are transit and receiving marks of "Wein" (Vienna) 1-8-79 and Beirut 1-13-79. The total delivery time of 30 days is remarkable in that day of steamships. The stamp is a 5 cent blue banknote issue picturing Zachary Taylor of early Florida Seminole War fame.

FLORIDA DOANE POSTMARK UPDATE

Deane R. Briggs, M.D.

This article is an update of my original Doane listing which was published in the *Florida Postal History Journal*, Vol. 3, No. 1, February 1996. As the Florida Doane Postmark Coordinator for *La Posta*, I have been updating the Florida Doane Listing on computer for the past ten years and can now list 465 Doane postmarks from Florida. Bill Helbock estimated that 540 class 4 post offices in Florida used the Doane style postmark and to date 86% of these have been confirmed. Doane usage is represented from nearly half of the 1195 Florida post offices operating in 1905. There are a few comments which might help new collectors interested in establishing a Doane collection.



Type I Doane

The major reference on Doane postmarks is Richard W. Helbock's book, *United States Doanes*, Raven Press, Lake Oswego, Oregon, published in 1993 by La Posta Publications. I can highly recommend this book to all collectors and copies can be obtained from James E. Lee, P.O. Drawer 250, Wheeling, IL 60090-0250.

The name Doane is attributed to the late Edith R. Doane, who pioneered the study of early 20th century postal history. During a three year period from 1903 - 1906, some 30,000 + class four U.S. post offices and a few class two and three offices were issued rubber

postmarking devices incorporating a 4 or 5 bar killer cancelling portion with the CDS postmarking portion. In the middle of the bars was incorporated a number corresponding to the prior year's postal compensation (per \$100) for each office. A number "2" for example, would represent \$100 - \$200 in annual compensation.

The first such devices to be distributed by the P.O. D. were made in early to mid 1903, and are considered "experimental" in nature. They went to approximately 500 post offices, and to date none are known to be used in Florida. An example of such a postmark used from Luckets, Virginia on May 11, 1903, is shown below. Note that it has a 30 mm. dial diameter.



LUCKETTS / VA. MAY 11, 1903
Type I "experimental" Doane

The actual official distribution of Type I Doanes began August 28, 1903, and continued until September 28, 1903, when the type II Doanes became available. It is estimated that nationwide only 1600 post offices received the experimental or actual type I devices. These are, therefore, the most scarce, and in general more valuable of the Doane post marks because of their limited numbers and the fact that the post card craze of the early 20th century had only just begun in 1903.

The type I Doane postmarking device incorporated a 5 bar killer and 28 mm. average diameter dial. These are easy to classify as they are the only Doanes to use 5 bars in the killer. The type II Doane used the same style CDS dial but has a 4 bar killer with each bar being actually two thin lines. The II Doanes were issued from September 29, 1903, until July 1, 1905. A total of 17,500 post offices are thought to have



Type II Doane

received these type II devices. Most type II Doanes can be easily determined by the thin line bars, but some over-inked or worn devices can mimic a type III Doane. The best way to determine the type II type is by the diameter of the dial. It is between the usual 28 mm. and maximum 30 mm. diameter size and usually uses Romanesque type letters in the dial.



Type III Doane

The type III Doanes were issued from July 1, 1905, until the fall of 1906, and were distributed to approximately 12,000 post offices. These devices used a 31 - 32 mm. dial and block lettering in the CDS and have four solid bars in the killer portion. These postmarks can be mistaken as type A four-bar postmarks if the number in the killer is not clear. It is also often possible to mistakenly classify a 4-bar postmark as a type III Doane if there is a poorly struck example or one over-striking the stamp. Lightly struck type III Doanes may resemble the thin bars of a

type II Doane but the diameter or the dial and the block lettering usually confirms the actual type.

Recently, a new concept of non-standard or composite Doanes has been reported. This type of Doane is a composite of two different post marking devices. Most frequently the dial of a type 2 is replaced with a type 3 lettering and has type III bars in the killer. It is also possible that a postmaster might take a type III dial from a later issued 4-bar device to replace the dial of a worn type II Doane, leaving the killer portion intact. Examples of Florida composite Doanes are PECAN and NEWTOWN, which is shown below with type II dial and type III killer bars.



NEWTOWN / FLA. Composite Type Doane

A few post offices received replacement Doane devices of a different type from the earlier one issued. Archer, Bloomingdale, East Palatka, Evinston, Fort Barrancas, Gardner, and Ponce Park have confirmed Florida usages of two different Doane types. The other Florida towns on the following list which have two different type Doanes are ones that have not been confirmed and the type III usage might well be a 4-bar usage. They are listed for completeness, but may be deleted in the future after confirmation.

The following listing of Florida Doanes is accurate to April 1999, and includes some other possible but not confirmed Doanes. Several of the listings are based on Dial only postmarks from the Willett-Thompson Collection and may be either type I or type II based on the 28 mm. dial diameter recorded. I have tentatively listed all of these as type II until

another confirmation example with killer bars is received. Some of the type III listings may actually be 4-bar postmarks as I have arbitrarily listed all Doanes submitted without clear killer number as a type III Doane. As these are confirmed, some of these may be deleted in the future. To date, the earliest known Florida Doane is from Mims, dated Nov. 5, 1903, and the latest known use is from Arran, dated June 19, 1924.

Collectors with examples or dates earlier or later than those recorded below are encouraged to submit a photocopy to me for upgrading of this listing. Deane R. Briggs, M.D., 160 E. Lake Howard Drive, Winter Haven, FL 33881.



ARCHER / FLA. MAR 15, 1906 type II (2)

ARCHER / FLA. DEC 13, 1907 type III (7)



PONCE PARK / FLA. JAN 15, 1906 type II (2)

PONCE PARK / FLA. MAR 9, 1907 type III (2)

POST OFFICE County	In Service	Ty	N	Earliest	Latest
ABBOTT Pasco	1888-1910	3	3	14-Oct-07	
ABERDEEN Jackson	1889-1922	2	1	9-Jul-07	
ADNA Osceola	1905-1906	3	1	16-Feb-06	
ALAFIA Hillsboro	1855-1920	2	1	24-May-05	29-Jun-05
ALAMO Gadsden	1879-1919	2	1	23-Jan-05	22-Dec-09
ALTMAN Hardee	1896-1915	2		-- Jan-05	
ALTON Lafayette	1904-1926	2	1	19-Nov-04	30-Jul-07
ALTOONA Lake	1880-Date	2	3	28-Oct-04	1-Jan-10
ANASTASIA St Johns	1888-1953	3	1	14-Apr-10	12-Jul-10
ANONA Pinellas	1883-1922	3	2	6-Jun-07	16-Apr-09
ANTIOCH Hillsboro	1892-1923	2	1	11-Sep-07	9-Jun-10
APOPKA Orange	1869-Date	3	7	17-Oct-06	12-Jul-12
ARCH CREEK Dade	1903-1926	3		25-Nov-07	'6-Dec- ?
ARCHER Alachua	1859-Date	2	3	25-May-05	15-Mar-06
ARCHER Alachua	1859-Date	3	7	17-Dec-06	7-Sep-09
ARGYLE Walton	1883-Date	3		21-Jul-06	
ARMSTRONG St. Johns	1886-1932	2	2	5-Feb-07	1-Jan-12
ARRAN Wakulla	1894-1954	2	2	2-Dec-05	19-Jun-24
ARREDONDA Alachua	1873-1925	3	2	4-Jan-09	1-Apr-11
ARTESIA Brevard	1891-1954	3	1	31-Oct-07	2-May-11
ASHMORE Wakulla	1894-1915	2		24-Sep-06	
ASHVILLE Jefferson	1894-1932	2		7-Apr-05	
ASTATULA Lake	1894-Date	2	1	18-Apr-06	26-Feb-08
AUBURNDALE Polk	1884-Date	3	4	28-Apr-06	27-Oct-09
AYCOCK Jackson	1905-1920	2	2	15-Feb-07	
BALDWIN Duval	1857-Date	2	3	28-Aug-06	14-Mar-07
BANANA Santa Rosa	1904-1905	2		13-Mar-05	
BARBERVILLE Volusia	1884-Date	3		14-Oct-07	30-Jun-08
BASCOM Jackson	1886-Date	1	9	25-Feb-07	24-Jun-09
BASSENGER Okeechobee	1893-1941	2	2	18-Jan-06	11-Jan-08
BAY HEAD Bay	1895-1937	2	2	18-May-04	29-Jun-08
BAY VIEW Pinellas	1875-1909	2		4-Mar-05	
BAYARD Duval	1855-Date	2	4	15-Jan-06	16-Sep-07
BAYONNE Manatee	1904-1907?	2	1	10-Jul-05	11-Jul-05
BELL Gilchrist	1897-Date	1		15-Oct-04	
BELLEAIR Pinellas	1897-1939	2	5	12-Jul-05	9-Mar-06
BELMORE Clay	1885-1917	3	1	31-Oct-08	
BERESFORD Volusia	1876-1954	2	1	10-Nov-04	1-Apr-09
BISCAYNE Dade	1870-1918	2	3	24-Apr-07	
BISCAYNE Dade	1870-1918	3	2	23-Dec-11	
BLACK POINT Dade	1904-1911	2	1	1-Nov-05	12-Nov-06
BLITCHTON Marion	1888-1917	2	2	31-Jan-08	
BLOOMINGDALE Hillsboro	1879-1910	3	1	7-Jan-08	
BLOOMINGDALE Hillsboro	1879-1910	2	1	13-Jan-06	
BLOUNTSTOWN Calhoun	1843-Date	1	3	24-Sep-06	27-Mar-07
BLOWNSTOWN Calhoun	1843-Date	2	5	15-May-05	
BLOXHAM Leon	1880-1935	2	1	18-Nov-11	3-Jul-12

BLUFF SPRINGS Escambia	1860-1954	2 3	5-Sep-04	
BOARDMAN Marion	1882-1947	2	28-Jun-05	
BOGGY Okaloosa	1893-1910	3 1	5-May-08	
BOHEMIA Escambia	1890-1908	2	15-Jan-07	
BOKEELIA Lee	1906-Date	3	12-Apr-08	
BONAVENTURE Brevard	1893-1945	2 2	14-Jan-09	28-Mar-10
BOYD Taylor	1904-1958	2	26-Jul-05	8-Aug-05
BOYETTE Hillsboro	1902-1940	2	23-Mar-04	11-Feb-07
BOYNTON Palm Beach	1896-1941	3 5	28-Feb-06	7-Mar-12
BRANFORD Suwannee	1882-Date	3 5	22-Dec-11	
BROOKER Bradford	1894-Date	2 3	14-Dec-06	12-Sep-08
BROOKLYN Clay	1890-1924	3 1	7-Mar-07	2-May-07
BROWN Columbia	1891-1915	3 2	2-Nov-07	
BRUCE Walton	1904-1959	2	7-May-06	
BRYCEVILLE Nassau	1886-Date	2 1	21-Apr-09	18-Oct-09
BUCKHORN Calhoun	1890-1910	2 2	14-Oct-07	
BUCKINGHAM Lee	1889-1924	2 2	15-Nov-04	20-Nov-05
BUENA VISTA Dade	1892-1921	2 2	17-Nov-05	11-Aug-07
BUNNELL Flagler	1892-Date	2	14-Dec-11	
BURCH Calhoun	1896-1911	2	10-May-10	
BUSHNELL Sumter	1885-Date	3 5	23-Jan-08	14-Apr-09
BYRD St. Johns	1905-1916	3 1	29-Apr-07	19-Aug-08
CALLAHAN Nassau	1858-Date	2 5	4-Feb-05	24-Nov-07
CALLAWAY Bay	1903-1922	3	31-Aug-05	
CALVARY Marion	1894-1917	3 1	18-Jul-11	
CAMPBELLTON Jackson	1832-Date	2 1	19-Jul-07	7-Feb-08
CAMPTON Okaloosa	1892-1908	2 2	11-Mar-05	3-Sep-06
CANAVERAL Brevard	1883-1950	3 1	4-Apr-08	30-Jan-13
CANTON Madison	1898-1908	3 1	1-Jun-07	16-Oct-08
CANTONMENT Escambia	1886-Date	2 2	21-Nov-04	11-May-07
CAPE SABLE Monroe	1904-1919	2	3-Nov-04	
CARLETON Putnam	1904-1923	2 1	29-Jun-06	9-May-08
CAXAMBAS Collier	1904-1927	2 1	14-Dec-04	9-Jan-07
CEDAR KEYS Levy	1866-1945	3 1	31-Dec-07	
CERRO GORDO Holmes	1848-1907	3	13-Aug-06	
CHAFIN Calhoun	1894-1912	1 2	20-Jan-04	9-Dec-09
CHAIRES Leon	1858-1955	2 2	23-May-05	25-Apr-06
CHATTAHOOCHEE Gadsden	1834-Date	2 4	3-Aug-05	17-Apr-08
CHESTER Nassau	1886-1927	2 2	23-Jun-05	28-Jun-06
CHICORA Polk	1881-1920	2 1	9-Mar-05	9-Feb-09
CHIEFLAND Levy	1889-Date	3 ?2	13-Sep-06	
CHOKOLOSKEE Collier	1892-Date	2 1	22-Feb-07	1908
CHRISTMAS Orange	1892-Date	2 1	27-Mar-08	13-Apr-09
CHUBB Polk	1906-1911	3 1	30-May-06	18-Mar-09
CHUMUCKLA Santa Rosa	1885-1921	2 2	8-May-06	
CITY POINT Brevard	1872-1957	2 2	11-Mar-07	17-Mar-11
CLARCONA Orange	1887-Date	2 2	28-Jan-05	9-Jul-08
CLARK Alachua	1894-1911	3 1	6-Mar-07	
CLARKSVILLE Calhoun	1905-date	3	5-May-06	
CLEVELAND Charlotte	1886-1955	3 2	22-Dec-08	20-Apr-11

COE MILLS Liberty	1894-1907	2	8-May-06	
COLEE St Johns	1899-1914	2 1	3-May-07	16-Nov-09
COLUMBIA Columbia	1886-1927	2 3	11-Nov-05	4-May-10
CONANT Lake	1884-1919	2 2	9-Nov-05	12-Dec-08
CONCORD Gadsden	1855-1953	3 2	15-Oct-06	
CONLIN Osceola	1905-1906	3 1	16-Feb-06	
CONNER Marion	1891-1948	2 2	28-Jan-07	21-Mar-08
CONOLEY Orange	1904-1906	2	17-Oct-04	
CONWAY Orange	1884-1907	2 2	7-Mar-06	31-Oct-07
CORNELL Marion	1903-1911	2 1	20-Feb-06	10-Dec-06
CORTEZ Manatee	1888-Date	3 1	22-Mar-11	12-Apr-11
COURTENAY Brevard	1886-1930	3 1	18-Dec-06	25-Nov-10
CRANDALL Nassau	1881-1930	2	5-Aug-04	
CRAWFORDVILLE Wakulla	1870-Date	3 3	21-Sep-08	7-Jul-09
CRAWFORDVILLE Wakulla	1870-date	2	21-Oct-07	
CROWNPOINT Orange	1886-1917	3 1	13-Mar-07	28-Mar-14
CROWS BLUFF Lake	1888-1913	2 1	6-Jan-05	15-Jun-11
CURTIS MILLS Wakulla	1876-1926	2 1	12-Jun-05	
CUTLER Dade	1884-1915	2	20-May-04	
CYPRESS Jackson	1883-Date	3 4	10-Oct-06	2-Jan-07
DADE CITY Pasco	1884-Date	3 11	23-Oct-06	19-Nov-07
DAISY Marion	1898-1911	3	7-Jul-08	21-Aug-08
DALLAS Marion	1888-1915	3 1	16-Mar-10	
DANIA Broward	1897-Date	3 4	5-Mar-07	6-Apr-10
DAY Lafayette	1892-Date	3 1	26-Apr-07	
DEERLAND Okaloosa	1899-1918	3 2	24-May-10	
DENAUD Hendry	1887-1943	2 2	17-May-04	23-May-05
DIEGO St. Johns	1899-1908	2 1	17-Nov-04	30-May-08
DILLON Hillsboro	1905-1915	3 1	9-Feb-09	
DILLS Jefferson	1896-?	2 1	9-Oct-07	11-Nov-07
DINSMORE Duval	1882-Date	2 2	6-Jul-06	
DOUBLE SINK Levy	1893-1912	3 1	13-Jan-08	6-Mar-11
DOWLING PARK Suwannee	1906-1941	3 1	27-Apr-07	27-Jun-07
DURBIN St. John's	1903-1924	2 1	17-Oct-06	19-Oct-06
DUTTON Alachua	1898-1913	3 4	12-Aug-09	
DUVAL Duval	1881-1910	2 2	13-Apr-06	22-Mar-07
DYALL Nassau	1886-1916	3 1	1908	
EAST PALATKA Putnam	1892-Date	2 2	23-Jun-05	7-Sep-05
EAST PALATKA Putnam	1892-Date	3 2	13-May-07	
EASTLAKE Marion	1884-1939	3 1	17-Feb-08	18-Jul-09
EASTPOINT Franklin	1898-Date	2 1	29-Apr-08	22-Aug-12
EATONVILLE Orange	1889-1918	2	29-Dec-04	19-Feb-06
EBB Madison	1904-1958	2	8-Mar-05	
EDWARDS Gadsden	1886-1909	1 2	27-Feb-04	11-Jul-08
EGMONT Hillsboro	1900-1910	3 5	30-Jan-06	26-Oct-10
EHREN Pasco	1890-1950	2	5-Oct-04	
ELARBEE Union	1903-1914	2	3-Oct-04	
ELKTON St. Johns	1905-Date	3 1	27-Jul-07	16-Jun-10
ELLENTON Manatee	1881-date	3	16-Dec-07	

ELLZEY Levy	1884-1947	2 2	24-Jan-05	24-Nov-09
EMERALDA Lake	1888-1930	3 2	19-Jan-07	1-Jun-12
EMPORIA Volusia	1882-1954	3 1	2-Mar-07	21-Oct-12
ENGLEWOOD Sarasota	1895-Date	3	6-Feb-07	
ENTERPRISE Volusia	1846-Date	2 2	4-Dec-06	10-Jul-09
ENVILLE Hernando	1898-1922	3	19-Nov-06	
ESCAMBIA Escambia	1827-1906	2	30-Nov-04	
ESTO Holmes	1901-1958	3 1	18-Nov-08	28-Jan-10
EUGENE Dixie	1906-1926	2 1	8-Dec-08	
EULALIA Duval	1904-1916	2	11-Feb-08	
EVANS Liberty	1903-1913	1	10-Sep-06	
EVINSTON Alachua	1882-Date	1 2	13-Feb-06	2-Oct-06
EVINSTON Alachua	1882-Date	3 2	2-Aug-07	10-Nov-07
FAIRBANKS Alachua	1875-1943	3 2	26-Nov-06	11-Nov-07
FAIRFIELD Marion	1899-Date	2 3	1-May-06	24-Jan-07
FAIRMOUNT Citrus	1885-1906	2 1	5-Oct-05	
FALMOUTH Suwannee	1906-1951	3 2	14-Mar-07	
FARMDALE Bay	1889-1941	3 1	14-Feb-10	29-Apr-13
FEDERAL POINT Putnam	1869-1929	2 2	20-Apr-06	14-Feb-10
FELKEL Leon	1904-1907	2 1	8-Dec-06	
FIVAY Pasco	1904-1912	2 1	11-Feb-08	
FLORAHOME Putnam	1899-Date	2	24-Dec-08	8-Oct-12
FLORENCE Polk	1903-1904	2 1	12-Feb-04	
FLORENCE VILLA Polk	1904-1956	2 1	20-Mar-05	7-Feb-13
FOGARTYVILLE Manatee	1899-1915	2 2	23-Jul-06	10-Jan-11
FOREST CITY Seminole	1884-1914	2 2	31-Oct-05	2-Aug-06
FORMOSA Orange	1886-1917	2 1	30-Dec-04	31-May-07
FORT BARRANCAS Escambia	1903-1943	2 3	9-Jul-04	25-Jan-06
FORT BARRANCAS Escambia	1903-1943	3 7	12-May-06	20-Apr-07
FORT DRUM Okeechobee	1888-1949	2 3	26-Mar-06	25-Apr-06
FORT GEORGE Duval	1869-Date	3 2	11-May-06	1-Jul-11
FORT GREEN Hardee	1880-1961	2 1 after	6-Apr-05	
FORT LAUDERDALE Broward	1891-Date	3 3	9-Mar-08	
FORT McCOY Marion	1852-date	2	28-Nov-04	
FRANCIS Putnam	1883-1919	2	2-Jun-06	7-May-08
FRINK Calhoun	1898-1951	3	2-Jan-07	1909
FROSTPROOF Polk	1892-Date	3 2	21-Dec-06	10-Apr-11
FRUITLAND PARK Lake	1889-Date	2 3	5-Nov-04	15-Jan-12
FRUITVILLE Sarasota	1895-1921	2 1	13-Jan-09	26-Sep-11
GABRIELLA Seminole	1886-1907	2 2	28-Aug-05	28-Jan-07
GALT Santa Rosa	1890-1909	3	6-Dec-05	
GARDNER Hardee	1898-1954	2 1	28-Apr-05	
GARDNER Hardee	1898-1954	3 5	18-Jul-06	
GASKIN Walton	1905-1909	2	4-Nov-05	
GAY Bay	1895-1911	3	6-Dec-05	16-May-06
GEORGIANA Brevard	1875-1923	1 3	12-Mar-05	2-Jan-07
GILLETTE Manatee	1895-1910	3	28-Dec-05	
GILMORE Duval	1887-1916	2 1	10-Oct-08	2-Nov-09
GLEN DeSoto	1901-1916	3 1	17-Aug-09	

GOSLINGVILLE Martin	1898-1905	1	25-Aug-04	
GOTHA Orange	1883-Date	2 2	13-Jan-05	13-Jan-10
GOULDING Escambia	1891-1906	3	6-Jul-06	
GRACEVILLE Jackson	1877-Date	2 3	22-Mar-05	16-Mar-09
GRAND ISLAND Lake	1886-Date	2	7-Oct-07	
GRAND RIDGE Jackson	1889-Date	2 5	30-Dec-07	
GRASMERE Orange	1885-1908	2 1	8-Mar-07	7-Jun-07
GREENSBORO Gadsden	1893-Date	2 1	19-Nov-07	23-Mar-08
GREENWOOD Jackson	1848-Date	3 1	16-Jan-08	10-Aug-09
GREER Pasco	1900-1922	3 3	25-Oct-06	13-Jul-07
GREER Pasco	1900-1922	1 3	7-Jun-05	
GRETNA Gadsden	1898-Date	3 2	29-Jul-07	24-Aug-09
GROVE CITY Charlotte	1887-1910	3 2	11-Jan-10	12-Jan-10
GROVE PARK Alachua	1883-1958	3 2	22-Dec-07	23-Dec-08
HAGUE Alachua	1883-1929	2 1	26-Oct-05	18-Nov-07
HAMPTON SPRINGS Taylor	1904-1941	2 1	19-Nov-06	11-Sep-07
HARLEM Putnam	1890-1911	3	11-Oct-08	
HASKELL Polk	1887-1926	3	6-Aug-06	
HAVANA Gadsden	1890-Date	2 2	17-Jan-07	20-Feb-08
HAWKS PARK Volusia	1884-1925	2 2	27-Dec-04	8-May-09
HAWTHORN Alachua	1880-Date	3 6	26-Feb-07	15-Apr-13
HAYDEN Sarasota	1895-1908	2 1	10-Feb-05	27-Mar-07
HERNDON Pasco	1886-1917	3 2	10-May-06	20-Nov-07
HIGHLAND Clay	1882-1954	3 3	23-Feb-07	23-Oct-09
HINSON Gadsden	1902-1956	2	16-Nov-05	17-May-06
HOBE SOUND Martin	1891-Date	3	22-Dec-09	
HOEY Hillsboro	1905-1907	2 1	13-Jul-05	
HOLLY HILL Volusia	1877-1949	3 2	27-Mar-06	15-May-11
HOLT Okaloosa	1883-Date	3 2	26-Sep-07	2-Nov-08
HOMESTEAD Dade	1904-Date	2	22-Jan-07	25-Mar-07
HORSESHOE Dixie	1904-1948	2 1	1-May-06	2-Nov-09
HOUSTON Suwannee	1859-1955	3 2	9-Mar-08	11-Aug-08
HUDSON Pasco	1882-1959	2 2	7-May-07	18-Feb-08
HUNTINGTON Putnam	1887-1953	3 3	16-Oct-06	17-Apr-08
HURST Polk	1900-1908	3 1	29-May-07	6-Jun-07
INDIANOLA Brevard	1889-1925	2 3	11-Feb-05	11-Jan-13
INGLIS Levy	1899-Date	3 2	27-Apr-05	6-Apr-10
INTERLACHEN Putnam	1881-Date	2 3	12-May-05	22-Jan-10
INWOOD Jackson	1889-1928	2	1-Oct-06	11-Jan-09
IRVINE Marion	1871-Date	3	21-Sep-07	
ISTACHATTA Hernando	1882-Date	3 3	5-Feb-07	16-Jun-09
IVAN Wakulla	1895-1911	2	17-Jun-05	
JANNEY Levy	1897-1917	3	7-Jan-08	
JENA Dixie	1904-1938	2 1	18-Nov-?	
JENNINGS LAKE Gilchrist	1900-1908	2 1	15-Oct-04	
JOHNSON Putnam	1881-1961	3 3	12-Mar-06	25-Apr-08
JOHNSTOWN Union	1902-1939	2 3	14-Oct-05	11-Jan-08
JUNIPER Gadsden	1901-1927	2 1	27-Jul-07	12-May-15

JUPITER Palm Beach	1884-Date	2 2	4-Nov-04	8-May-08
KATHLEEN Polk	1886-Date	3	15-May-06	
KEYSVILLE Hillsboro	1878-1956	2 73	15-Nov-07	
KING Hamilton	1893-1913	3 1	25-Mar-10	
KINGS FERRY Nassau	1856-1926	2 5	2-Dec-07	6-Aug-08
KNIGHTS Hillsboro	1889-1957	1 1	5-Nov-04	30-Oct-06
KNOX HILL Walton	1852-1907	2 1	28-Jun-06	
LABELLE Hendry	1898-Date	3 1	20-Feb-06	
LACOOCHEE Pasco	1888-Date	2 2	2-Jun-06	24-Jun-07
LADY LAKE Lake	1883-Date	2 2	29-May-05	27-Mar-11
LAKE BUFFUM Polk	1893-1910	3 2	14-Apr-09	14-Mar-10
LAKE COMO Putnam	1877-Date	3 3	15-Feb-06	14-Feb-10
LAKE HOWELL Orange	1886-1907	2 1	17-Aug-06	27-Feb-07
LAKE JOE Taylor	1888-1914	2	21-Mar-10	
LAKE WEIR Marion	1880-1935	2 2	30-Jul-06	26-Jul-07
LAKEWOOD Walton	1902-Date	1 1	5-Jul-04	14-Mar-05
LARKINS Dade	1899-1926	3 1	7-Mar-08	
LAWTEY Bradford	1875-Date	2 1	12-Dec-06	3-May-08
LEBANON Levy	1889-1923	2	19-Oct-07	2-Jul-08
LECANTO Citrus	1883-Date	3 2	3-Dec-06	10-Mar-10
LESSIE Nassau	1899-1908	1 1	7-Jun-09	
LEVYVILLE Levy	1866-1915	3 2	31-Dec-07	
LILLYBRIDGE Hillsboro	1906-1916	3 1	18-Jul-07	
LISBON Lake	1885-1942	2 2	8-Feb-07	22-Dec-07
LITHIA Hillsboro	1904-Date	2	4-Nov-04	
LITTLE RIVER Dade	1898-1927	3 6	4-May-06	12-Apr-10
LIVINGSTON Orange	1888-1908	2 1	27-Mar-05	22-Jun-07
LOCHLOOSA Alachua	1881-Date	2	29-Oct-07	4-Nov-07
LORETTO Duval	1905-1916	3 1	31-Mar-06	3-Aug-10
LOTUS Brevard	1894-1933	2 2	16-Apr-06	11-Nov-07
LOUGHMAN Polk	1897-Date	3 3	24-May-06	26-Aug-08
LOWELL Marion	1888-Date	2 2	4-Oct-05	25-Dec-07
MABEL Sumter	1894-1918	3 1	13-Jan-09	24-Mar-10
MALABAR Brevard	1883-Date	3 2	18-Jun-07	22-Dec-10
MANDARIN Duval	1830-Date	2 3	16-Nov-04	8-Apr-09
MARTEL Marion	1887-1925	2	9-May-04	
MARY ESTHER Okaloosa	1871-Date	2 1	5-Aug-05	9-Apr-09
MARYSVILLE Calhoun	1879-1917	2 1	13-Jun-10	
MAYO Lafayette	1881-Date	2	8-Oct-05	6-Jun-08
MAYPORT Duval	1869-Date	2 4	1-May-05	27-Mar-11
McALPIN Suwannee	1883-Date	2 2	15-Jul-05	29-Jan-07
McINTOSH Marion	1887-Date	3 5	13-Feb-07	8-Apr-09
McKINLEY Columbia	1903-1918	2	9-Jul-06	
McMEEKIN Putnam	1881-1919	2 2	26-May-04	6-Jan-08
McRAE Clay	1883-1916	2 1	24-Oct-08	8-May-09
MELBOURNE BEACH Brevard	1891-Date	3 1	11-Feb-07	18-Mar-14
MEREDITH Levy	1903-1927	2	12-Jan-07	
MERRITT Brevard	1884-1935	3 3	2-Jan-07	21-Dec-08

MIAKKA Sarasota	1879-1934	2 2	5-Jul-07	9-Mar-08
MIDDLEBURG Clay	1851-Date	2 3	16-Feb-04	10-Aug-06
MIDLAND Polk	1887-1907	2	15-Jul-05	
MILL CREEK St Johns	1868-1925	2	11-Dec-08	16-Sep-09
MILLERS FERRY Washington	1879-1953	1 1	16-Jan-04	4-Aug-08
MILLVILLE Bay	1899-1948	1 3	2-Mar-04	
MILLVILLE Bay	1899-1948	3	19-Sep-07	
MIMS Brevard	1886-Date	1 2	5-Nov-03	28-Jan-08
MINNEOLA Lake	1883-Date	3 3	15-Feb-07	16-Jun-10
MOHAWK Lake	1892-1943	3	28-Feb-12	
MOLINO Escambia	1866-Date	2	19-Apr-04	
MONTAGUE Marion	1886-1915	3 1	12-Aug-09	
MONTCLAIR Lake	1883-1929	2	31-Mar-06	
MONTVERDE Lake	1887-Date	3 2	1906	10-Jul-09
MORRISTON Levy	1892-Date	2	15-Mar-05	
MOULTRIE St Johns	1882-1947	2 2	14-Jun-05	6-Apr-09
MOUNT DORA Lake	1883-Date	3 5	4-Feb-05	6-Oct-11
MOUNT PLEASANT Gadsden	1885-1958	2 2	15-Oct-06	8-Aug-07
MULAT Santa Rosa	1892-1953	2 2	21-Jun-07	
MYRTLE Pasco	1893-1914	2 1	4-Feb-11	2-Jan-13
NARANJA Dade	1906-1958	3 1	27-Feb-13	
NARAUJA Dade	1906-1958	3 1	13-Jul-07	
NASH Jefferson	1904-1937	2 1	18-Jul-06	26-Dec-08
NEBO Union	1891-1905	2	2-Jun-04	
NEPTUNE Palm Beach	1887-1908	2 3	29-Sep-04	14-Jul-06
NEW AUGUSTINE St. Johns	1889-1925	3 4	22-Dec-05	19-Sep-10
NEW BERLIN Duval	1875-1933	2 3	1-Feb-06	22-Dec-06
NEWTOWN Levy	1900-1912	2 2	27-Jan-09	3-Sep-09
NIXON Bay	1892-1912	2	12-Dec-04	
NOMA Holmes	1902-Date	2	17-May-05	20-Sep-05
NORWALK Putnam	1876-1916	2 2	12-Mar-06	3-Jun-08
NORWOOD Lafayette	1902-1909	3	27-Jul-06	
OAK Marion	1904-1936	2 1	28-Mar-05	6-Jun-17
OAK HILL Volusia	1875-Date	2 4	13-Jul-05	4-Feb-07
OCHESSEE Calhoun	1831-1911	3	14-Jun-06	
OCKLOCKNEE Leon	1871-1927	2	17-Sep-06	
OJUS Dade	1897-1958	2	5-Sep-07	
OLD TOWN Dixie	1857-Date	3 1	16-Nov-08	1-Aug-12
OLUSTEE Baker	1849-Date	2 ?2	13-Sep-09	
ONEIL Nassau	1904-1906	2	11-Oct-05	
ORANGE Liberty	1876-1958	1	24-Jun-07	11-Aug-08
ORANGE LAKE Marion	1847-Date	2 2	8-May-07	
ORANGE SPRINGS Marion	1846-Date	3 3	6-Sep-11	13-Jun-12
ORANGEDALE St Johns	1880-1929	3 1	29-Jun-08	21-Dec-09
ORIENT Hillsboro	1897-1907	2	1-Sep-05	
ORMOND BEACH Volusia	1906-Date	3 1	14-Mar-06	3-Mar-12
OSTEEN Volusia	1883-Date	2 2	27-Sep-05	16-Jan-08
OVIEDO Seminole	1879-Date	3 5	14-May-06	15-Jan-12
OWANITA Lee	1904-1930	2 1	24-Jan-06	22-Dec-09

PABLO BEACH Duval	1886-1925	2 3	8-Jun-06	29-Jun-08
PALMVIEW Manatee	1893-1909	2 1	21-Feb-07	24-Jun-07
PANAMA CITY Bay	1906-Date	3 1	8-Oct-06	20-Feb-09
PANAMA PARK Duval	1885-1919	3 4	7-Oct-10	
PAOLA Seminole	1880-1955	3 2	8-Jan-07	24-Jul-11
PARADISE Alachua	1885-1908	2 2	14-Aug-06	
PARKER Bay	1886-1960	3 2	26-Jan-07	10-Jun-10
PASCO Pasco	1889-1918	2	21-Feb-05	
PASSAGRILLE Pinellas	1905-1931	3 1	23-Mar-07	8-Mar-08
PEBBLE Polk	1892-1907	2	25-Jul-04	
PECAN Putnam	1905-1906	2 1	21-Feb-06	
PERRINE Dade	1904-1957	2	29-Mar-07	
PHILLIPI Polk	1905-1907	3	12-Mar-06	
PHOSPHORIA Polk	1891-1908	2 2	8-Feb-05	13-Jun-07
PICOLATA St. Johns	1843-1916	3	29-Mar-07	
PIEDMONT Orange	1903-1922	2 1	26-May-05	6-Mar-08
PIERCE Polk	1907-Date	3 1	4-Feb-09	25-Jun-09
PINE Marion	1894-1918	3 1	21-Jan-07	18-Jul-07
PINE LEVEL DeSoto	1871-1928	2	24-May-05	
PINEMOUNT Suwannee	1883-1955	3 3	17-May-07	
PINEWOOD Santa Rosa	1904-1920	2 1	15-Feb-06	9-Mar-06
PITTMAN Lake	1884-1925	2 1	12-Nov-04	26-Mar-17
PITTS Holmes	1895-1907	3 1	10-Oct-05	
PLUMMERS Duvall	1899-1918	1 1	1-May-06	16-Sep-07
PLYMOUTH Orange	1886-Date	3 2	7-Feb-07	27-Feb-11
POMONA Putnam	1880-1945	3 4	20-Jun-06	23-Dec-09
PONCE PARK Volusia	1884-1943	2 2	23-Jun-04	15-Jan-06
PONCE PARK Volusia	1884-1943	3 2	3-Mar-06	13-Aug-07
PORT INGLIS Levy	1905-1916	3 1	4-Apr-07	3-Mar-11
PORT ORANGE Volusia	1867-1958	3 5	12-Jul-06	25-Jan-08
PORT RICHEY Pasco	1884-Date	2 2	9-Apr-06	20-Jan-12
PORT TAMPA Hillsboro	1890-1954	2 8	16-May-04	12-Oct-06
PORT TAMPA CITY Hillsboro	1892-Date	3 7	9-May-06	6-Mar-07
PUNTA RASSA Lee	1872-1924	2 2	14-Feb-05	1906
PUTNAM HALL Putnam	1875-date	2 2	30-Nov-05	13-Sep-09
QUAY Indian River	1902-1925	2 2	27-Mar-06	19-Feb-07
REDBAY Walton	1881-1959	2 1	2-Jun-05	21-Jul-08
RICHLAND Pasco	1886-1948	2 2	30-Jun-06	18-Apr-08
RIVERIA Putnam	1904-1912	2	6-Mar-09	
RIVERVIEW Hillsboro	1891-Date	2 2	2-Jan-05	21-Jan-07
ROBERTS Escambia	1887-1910	3 2	29-Oct-07	14-Apr-08
ROCHELLE Alachua	1884-1945	3 4	8-Aug-05	13-Aug-09
ROCHELLE Alachua	1884-1945	2 3	31-Dec-04	
ROCK BLUFF Liberty	1867-1959	2 2	2-May-05	29-Nov-10
ROCK SPRINGS Marion	1886-1918	2	26-Jul-05	
ROCKWELL Marion	1891-1917	3 2	13-Apr-08	22-May-09
ROCKY Levy	1899-1916	2	30-Jun-06	
RODMAN Putnam	1900-1922	2	3-Dec-04	
ROMEO Marion	1888-1955	1 1	7-Apr-09	

ROSELAND Indian River	1892-Date	2 3	28-Aug-05	6-Jan-08
ROY Liberty	1904-1928	2 1	5-Apr-07	7-Oct-0
ROYAL Sumter	1891-1907	2	21-Jul-05	
RUSS Washington	1904-1909	2	21-Apr-08	
SAFETY HARBOR Pinellas	1892-Date	2 1	4-May-06	7-Mar-08
SAFFOLD Hillsboro	1902-1907	3 1	13-Mar-07	
SAINT JAMES CITY Lee	1886-Date	2 2	10-Dec-04	
SAINT MARKS Wakulla	1827-Date	2 3	24-Sep-06	20-Mar-07
SANDERSON Baker	1866-Date	2 73	18-Jul-05	2-Jan-08
SANDY Manatee	1889-1913	2	15-Oct-07	
SATSUMA HEIGHTS Putnam	1886-1927	2 3	20-Dec-04	29-Jan-07
SAUNDERS Bay	1904-1915	2	12-May-06	
SAWDUST Gadsden	1895-1909	2	4-May-08	10-Jul-09
SCOTT Holmes	1904-1905	2	24-Jan-05	
SEVEN OAKS Pinellas	1890-1907	3 3	19-Dec-06	19-Aug-07
SEVILLE Volusia	1879-Date	3 3	15-May-06	10-Aug-08
SEWALLS POINT Martin	1891-1918	1 2	6-Jun-04	10-Apr-06
SHARPES Brevard	1890-Date	3 2	17-Feb-06	27-Mar-07
SHILOH Brevard	1884-1955	3 1	11-Oct-06	27-Dec-10
SIDNEY (SYDNEY) Hillsboro	1882-Date	2 73	20-Jul-07	
SILAS Holmes	1904-1909	2	17-Feb-06	
SKINNER Jackson	1903-1906	2	16-Feb-04	
SNEADS Jackson	1883-Date	2	19-Dec-04	
SOPCHOPPY Wakulla	1848-Date	2 1	10-Sep-06	3-Jan-07
SOUTH LAKE WEIR Marion	1878-1924	2 2	5-Dec-04	4-Jun-08
SPRING HILL Leon	1894-1931	2 3	11-Aug-08	8-Nov-10
STAFFORD Calhoun	1904-1913	2 1	29-Nov-09	30-Jul-07
STANDARD Marion	1894-1915	2	28-Sep-06	
STANTON Marion	1883-1926	2 3	20-Nov-06	24-Jan-10
STAR Jackson	1903-1928	2	1-Aug-05	
STEINHATCHEE Lafayette	1876-1937	1 1	7-Apr-08	
STONEWALL Duval	1886-1907	2 1	16-Mar-05	
STUART Martin	1895-Date	2 5	23-Feb-05	29-Sep-08
STUART, FLA./ REC'D Martin	1895-Date	2 5	23-Dec-10	
SURVEY Lee	1901-1912	3 3	31-Dec-09	12-Jan-10
SUWANNEE Suwannee	1869-1908	2 2	19-Jun-05	28-Dec-07
SVEA Okaloosa	1897-1910	3 3	3-May-06	29-Dec-06
SYCAMORE Gadsden	1886-1913	2 1	23-Jul-07	30-Jul-07
SYDNEY Hillsboro	1882-Date	2	20-Jun-07	
TANGERINE Orange	1881-Date	2 3	10-Apr-05	14-Mar-10
TERRA CEIA Manatee	1891-Date	2 4	22-Jan-08	18-Mar-10
TILLMAN Brevard	1887-1925	2 1	9-Nov-04	
TIOGA Alachua	1903-1907	3 2	3-Oct-06	
TOLEDO Indian River	1894-1918	3 1	11-Jan-09	
TORTUGAS Monroe	1899-1907	3 3	21-Feb-06	10-Jul-06
TURKEY CREEK Hillsboro	1892-1943	3 2	30-Mar-06	
TYLER Gilchrist	1904-1918	2 1	25-Sep-06	19-Apr-07
UNION Walton	1888-1919	3 1	20-Jun-06	15-Aug-08

VALKARIA Brevard	1890-1933	2 2	30-Oct-08	
VENICE Sarasota	1888-Date	3 1	11-Feb-07	18-Dec-11
VERO Indian River	1891-1925	3 2	1-Aug-06	
VETERAN Pinellas	1906-1910	3 1	21-Jun-08	14-Mar-09
VICTORIA Orange	1884-1911	2 1	28-Feb-05	
VISTA Levy	1900-1932	2	27-Mar-06	
WACISSA Jefferson	1881-Date	2	16-Oct-05	
WAKULLA Wakulla	1882-1955	2 2	11-Oct-07	28-Dec-10
WALLACE Santa Rosa	1904-1916	2 ?1	6-Apr-07	25-May-08
WALLER Clay	1893-1917	3 1	22-Apr-09	11-Apr-12
WEIRSDALE Marion	1892-Date	2 2	2-Mar-07	
WEKIWA SPRINGS Orange	1906-1910	3 1	28-Jan-07	4-Mar-08
WELAKA Putnam	1851-Date	2 4	21-Jun-06	18-Mar-07
WEST APOPKA Lake	1889-1918	3 1	27-May-07	23-Feb-13
WEST POMPANO Broward	1900-1910	3 2?	11-Jan-07	15-Mar-08
WEST TOCOI Clay	1885-1925	2 1	24-Apr-09	
WETAPPO Bay	1888-1933	3 1	18-Dec-09	12-Apr-11
WHITE CITY St. Lucie	1894-1921	3 3	21-Jan-07	
WHITNEY Lake	1886-1933	3 3	15-Apr-07	27-Mar-09
WIMAUMA Hillsboro	1902-Date	3 2	28-Nov-06	22-Feb-07
WINTER PARK Orange	1882-Date	2 10	16-Apr-05	6-Jan-08
WOODBIDGE Orange	1886-1908	3 1	20-Mar-07	27-Mar-07
WOODS Liberty	1897-1932	2 2	28-Oct-04	18-Dec-06
WOODSTOCK Baker	1904-1912	2	12-Nov-09	
WOODVILLE Leon	1888-Date	1 3	14-Mar-07	10-Aug-07
YORK Marion	1890-1926	2 2	22-Nov-04	23-Mar-06
ZELLWOOD Orange	1877-Date	2 3	15-Jan-06	18-Dec-10

MEMBER DEALERS

PHIL BANSNER

Box 2529, 2320 Highland Street
West Lawn, PA 19609
(610) 678-5000

WILLIAM E. CALLAHAN

Route 1, Box 342F
Troy, AL 36079
(334) 566-6970

ELWYN J. DOUBLEDAY, JR.

Box 32
Alton Bay, NH 03810
(603) 875-6310

JIM FORTE

P.O. Box 94822
Las Vegas, NV 89193
(702) 791-6828

WILLIAM A. FOX

4 Reef Club
Hilton Head, SC 29926
(843) 681-9455

GARY A. HAUSIN

ROBERT J. HAUSIN
4897 Tamiami Trail East
Naples, FL 33962
(813) 732-8000

RICHARD W. HELBOCK

LA POSTA
P.O. Box 135
Lake Oswego, OR 97034
(503) 657-5685

SUPPORT THEM

STAN JAMESON

Empire Company
P.O. Box 264
St. Petersburg, FL 33731
(813) 526-5203

JOHN L. KIMBROUGH

10140 Wandering Way
Benbrook, TX 76126
(817) 244-2447

GORDON D. McHENRY

Box 1117
Osprey, FL 34229
(813) 966-5563

HERBERT P. McNEAL

520 Lakemont Ave. South
Winter Park, FL 32792
(407) 644-4012

DAVID G. PHILLIPS

P.O. Box 611388
North Miami, FL 33161
(305) 895-5262

S. GEORGE TRAGER

333 - 41 Street #104
Miami Beach, FL 33140
(305) 531-6727

C. MICHAEL WIEDEMANN

Box 6130A
Titusville, FL 32782
(407) 269-3377