

FLORIDA POSTAL HISTORY JOURNAL

VOL. 10, NO. 3 SEPTEMBER 2003

Follow Up On The Cuban Due Cover
Deane R. Briggs, M.D. 2

Apalachicola New Stampless Listing
William H. Johnson, D.D.S. 3

Jamestown Florida
James H. Moses 4

Baldwin, Fla. Fancy Star
William A. Fox 6

The Florence Villa Hotel
David C. Lingard. 7

Krygyzstan To Florida
Edward F. Palmer 15

Beazley Fla Stampless Cover
Deane R. Briggs, M.D. 16

Schooner Experiment Dateline
Niles Schuh 20

FLORIDA POSTAL HISTORY SOCIETY OFFICERS

PRESIDENT -	THEODORE LIGHT
PAST PRESIDENT -	DONALD G. THOMPSON
VICE PRESIDENT -	EDWARD R. JOYCE
SEC. - TREASURER -	DEANE R. BRIGGS, M.D.
JOURNAL EDITOR -	DEANE R. BRIGGS, M.D.
REGIONAL EDITORS -	NILES F. SCHUH
	THEODORE LIGHT
	HERBERT P. McNEAL

Membership applications may be obtained from Deane R. Briggs, M.D., 160 E. Lake Howard Drive, Winter Haven, FL 33881, phone: (863) 299-1251, fax: (863) 299-7666, e-mail: drb@gte.net

Articles may be submitted for publication to Deane R. Briggs, M.D., 160 E. Lake Howard Dr. Winter Haven, FL 33881

FLORIDA POSTAL HISTORY SOCIETY

ANNUAL MEETING

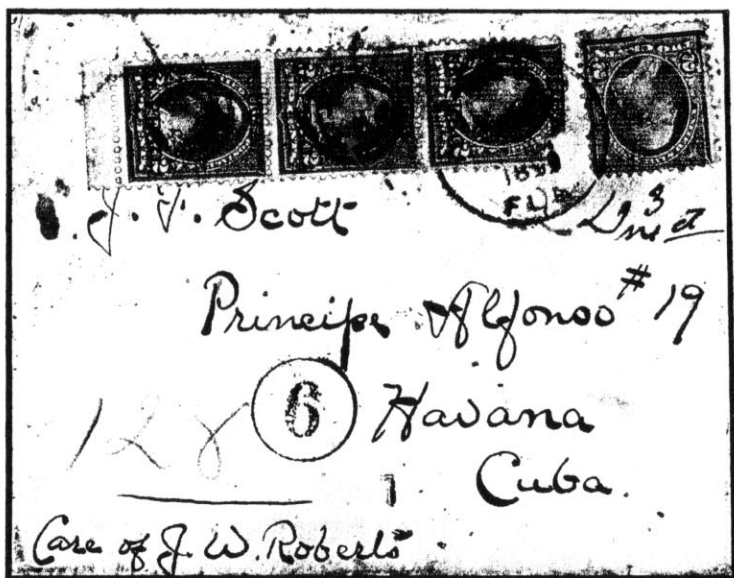
**SATURDAY FEBRUARY 7, 2004
12:00 P.M.**

Unless I have the date wrong, the annual meeting of the Florida Postal History Society will be held on Saturday, February 7, 2004, at 12:00 pm. in Sarasota, Florida, in conjunction with the **SARASOTA NATIONAL STAMP EXHIBITION**. If the date is January 31, 2004, I will let members known in the January journal issue or can be checked in Linn's Stamp News. The actual meeting room has not been established yet but will be listed in the exhibition program. President Ted Light will present a program on Florida manuscript postmarks. The 2003 annual meeting was a great success with nearly 20 members present. Lets hope for another great meeting.

All members are encouraged to attend this annual meeting.

FOLLOW UP ON THE CUBAN DUE COVER

Deane R. Briggs, M.D.

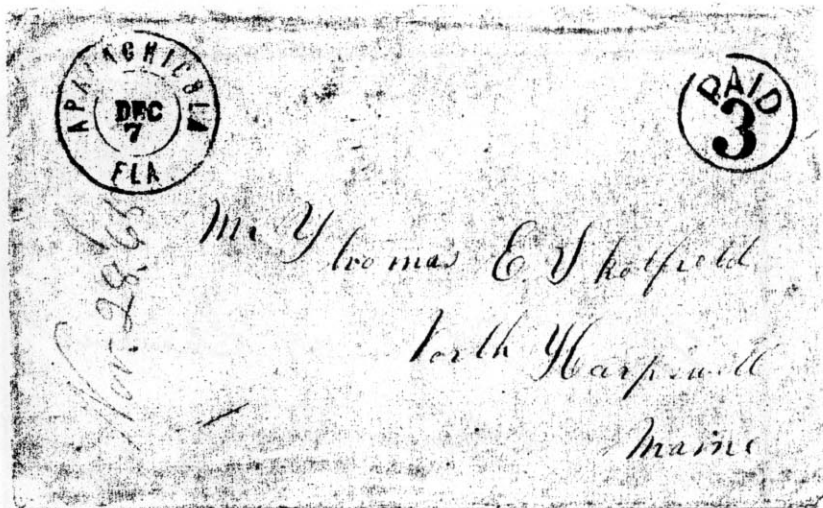


ORMOND FLA. AUG 21 1899 postmark ties 2c red #267 on cover to Havana, Cuba, with manuscript "Due 3 ct" and Cuban unpaid (6) with strip of 3 Cuban #222 paying postage due.

The above cover and article by Herbert P. McNeal in the last issue of the Florida Postal History Journal generated a nice response from members Michael Wiedemann and Yamil Kouri who correctly noted that underpaid letters should be charged double the amount due. As editor, I apologize for the typo in Herb's article. In the text I did make a mistake and type "Due 2ct" instead of "Due 3ct". Yamil is a specialist in Cuban postal history and noted: "It is an underpaid letter to Cuba charged double the deficit, as required by the UPU since 1875. The civilian rate between the US and Cuba at the time was 5 cents, so this letter was charged 6 cents postage due (3X2). On April 1, 1901 the rate to Cuba was lowered to 2 cents. What is uncommon is the use of regular postage stamps in Cuba instead of the overprinted postage due stamps."

APALACHICOLA NEW STAMPLESS LISTING

William H. Johnson, D.D.S.

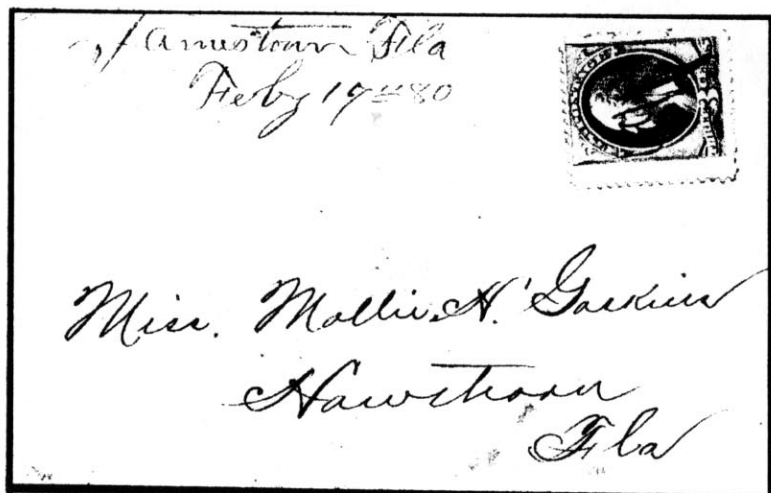


APALACHICOLA / FLA DEC 7 (1865) double circle postmark and PAID / 3 (type I) rate on reconstruction period cover, usage to Maine.

The above cover is postmarked with a new listing example of a double circle handstamp from Apalachicola. There are no known usages during the period of Union occupation of Apalachicola during 1862 – 1865 as no post office was operational during those periods. This must be an after war reconstruction period handstamp used with a stampless pre-war PAID / 3 in circle rate marker. The stampless usage in 1865 reflects the fact that adhesive stamps had not been sent by December 1865 to the Apalachicola post office and as such is a provisional usage. The Apalachicola post office was reopened after the war on September 25, 1865 with Eugene Keilmansegge the postmaster. As Apalachicola was a fairly large post office and one of the first to open during reconstruction, it is likely that adhesive stamps were obtained fairly shortly after December 1865, making this stampless usage perhaps unique.

JAMESTOWN FLORIDA

James H. Moses



Jamestown Fla Feby 17=(18)80 manuscript postmark with pen cancelled 3c green stamp, usage to Hawthorn, Fla.

As a collector of St. Lucie, Martin and Indian River County postal history, I was quite excited to find a cover to Hawthorn with a manuscript **Jamestown Fla / Feby 17=80** postmark. On the reverse is a four-line pencil notation in a woman's hand "From my dear Darling Willie Oh how I wish I could see you tonight. Feby 24th 80". I knew Jamestown, now in Martin County, was a short-lived post office and was pleased to find the lightly penciled information "rare 1 year P.O. E. Mar 18, 1879 D. Mar 19, 1880. A forerunner of a small post office serving the sparsely populated central east coast was a real find.

I appear to have missed the mark a wee bit. What I found in fact is a cover from Jamestown, Alachua County. It was indeed a short-lived post office and was discontinued on March 19, 1880, with a name

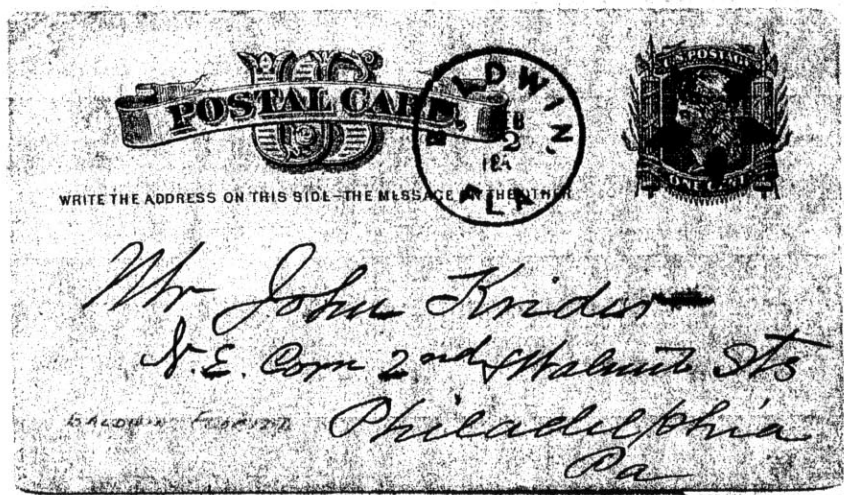
changed to Hawthorn. Why then was the cover addressed to Hawthorn a month before that town was a post office town? The Jamestown, Fla., Martin County, which I had hoped for was an equally short-lived post office (May 26, 1899 to February 28, 1900), which was adsorbed by Goslingsville (August 1898 to August 1905), which eventually became the present day Jensen Beach.

MESSAGE FROM THE EDITOR

This issue of the Florida Postal History Journal is only made possible by members who submit articles for publication. The editor really appreciates the response demonstrated in this issue. There are articles or responses from 10 different members in this issue, which is the most since the Journal was started over 12 years ago. As editor, I congratulate our members and encourage the continued support. Some issues have been only printed because of covers I have dug out of my personal collection, and I don't have many more that I can write up. Please continue membership support and submit any cover in your collection that even might be of interest.

BALDWIN, FLA. FANCY 5 STAR

William A. Fox



BALDWIN, FLA. FEB 2 1881 black postmark with fancy 5-pointed star postmark on 1 c government post card.

I read with great interest the article by Niles Schuh in the January 2003 issue of the *Florida Postal History Journal* on the fancy cancels of Jacksonville. The above government post card is from Baldwin, Fla., which is located very near Jacksonville and has a nice strike of a fancy 5 pointed star cancel. This may lead other members to submit fancy cancels to start a census or listing of known Florida fancy cancellations.

THE FLORENCE VILLA HOTEL

David C. Lingard

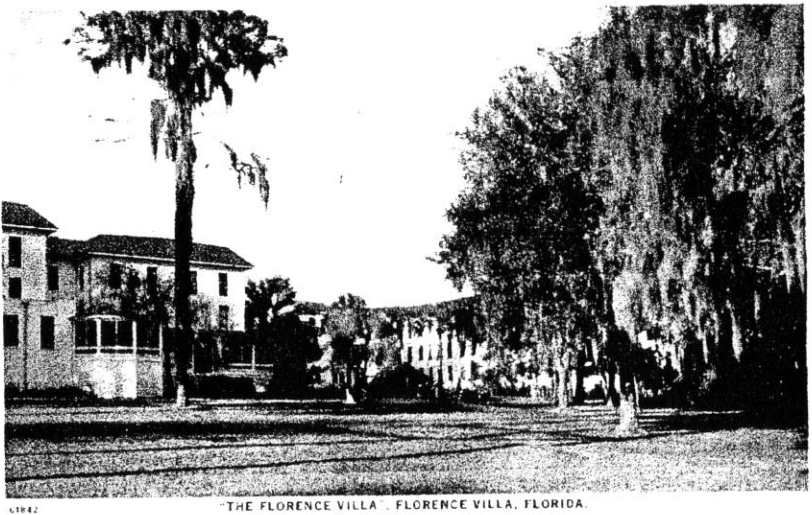


Fig. 1. “The Florence Villa” hotel at Florence Villa, Florida

The story of Florence Villa is really the story of one industrious, hard working, man and his wife. Dr. Frederick William Inman and Florence Jewett Inman were from Akron, Ohio. They came to Florida and camped out in the winter of 1882-1883 on land that Florence’s father, Dr. Mendall Jewett, had purchased years earlier when he had visited a cousin in Thonotosassa. Around 1885, the Inman’s purchased Florence’s father’s land and many more acres surrounding it. They built a ten-room home on the site. They planted oranges from seedlings, tomatoes and pineapples, which were decimated by a terrible freeze that occurred in 1886. Instead of leaving Polk County like many others, the Inman’s began taking paying customers to their home in the winter. Because of the beautiful location and the good cooking and hospitality of Florence Inman, the “Florence Villa” Hotel gained a tremendous reputation. They had many influential patrons including railroad tycoon Henry Plant and President McKinley’s brother Abner McKinley.

By 1891, as memories of the freeze diminished, Dr. Inman again planted citrus trees, 40 acres for himself and 136 acres he managed for others. He also planted 40 acres of tomatoes. The inn flourished and in 1893 was expanded to 36 rooms. Dr. Inman added a steam-powered yacht named "Florence" to take patrons through several of the nearby lakes. In 1902 the Florence Villa Hotel was again expanded with an additional 37 rooms taking the total to 90. The community around the Florence Villa Hotel was growing because of the workers needed at the Florence Villa Packing Plant (owned by Dr. Inman) and the many workers needed at the hotel. In early 1906, Dr. Inman sold the Florence Villa Hotel and the 695 acres of land surrounding it. He remained as manager of the hotel but retired sometime before January 7, 1909.

The remarkable Dr. Inman continued to plant new things including several varieties of peaches on over 50 acres. He also continued to promote the citrus business and Dr. Inman together with three other men established the Florida Citrus Exchange to market citrus nationally. He served as the president of the exchange until his death in November 1910. A year before his death, Dr. Inman sold 1,700 acres of his land to two brothers (M.E. Gillett and D.C. Gillett) who soon developed that property into the community of Lucerne Park (see the May 2002 F.P.H. Journal article on Lucerne Park).

The Florence Villa Hotel and surrounding town continued to thrive. It had a railroad depot and was incorporated in 1917. The Florence Villa Hotel declined during the 1920's because of several factors, including devastating citrus diseases, the Florida land boom and bust in 1926, followed by the Great Depression in 1929. The author has not been able to determine when the Florence Villa Hotel officially closed, but the once grand 150-room hotel was razed in 1941.

The Florence Villa post office was officially opened as Florence on January 14, 1902 with Dr. Inman as the first postmaster. According to the "Record of Appointment of Postmasters", the actual post office application signed by Dr. Inman clearly reads "Florence Villa" (Fig. 2) The post office name was officially changed to

Florence Villa on January 22, 1904, with Dr. Inman remaining as postmaster until December 12, 1906.

H

No. 1911.

Post Office Department,
OFFICE OF THE FOURTH ASSISTANT POSTMASTER GENERAL,
APPOINTMENT DIVISION.

Florence Villa WASHINGTON, D. C., 190

Si: Before the Postmaster General decides upon the application for the establishment of a post office
at *Washington*, County of *D.C.*, State
of *D.C.*, it will be necessary for you to carefully answer the subjoined questions, get a
neighboring postmaster to certify to the correctness of the answers, and return the location paper to the
Department, addressed to me. If the site selected for the proposed office be not on any mail route, only a
"Special Office" can be established, to be supplied with mail from some convenient point on the nearest
mail route by a special carrier, for which service a sum equal two-thirds the salary of the postmaster will

LOCAL POSTMASTER APPOINTMENT DIV.
JAN 7 1902
POSTMASTER GENERAL

**Fig. 2 Post Office Department Appointment dated Jan 7, 1902
for the Florence Villa post office.**

The post office was located on the 1st floor of the hotel, between the main building and the annex. The author believes that the Florence Villa Post Office began as a seasonal office, closing during the summer months, similar to the Royal Poinciana and Breakers post offices. A Bartow Courier Informant newspaper article dated February 19, 1902 reported that Dr. Inman had a deputy postmaster, Miss Alice Moore. The paper said, "She is very much in demand, her office being fairly besieged with the mail comes in." The paper further stated that "cancellations have amounted from \$1.00 to \$2.80 a day!" That would amount to 100 to 280 post cards a day rated at 1 cent, slightly less numbers for 2-cent letters. That same newspaper article confirms the seasonal operation of the post office, "The Florence Villa Post Office was established for the season and will be suspended for the summer." Another newspaper article of December 17, 1902 reported, "a regular U.S. Post Office is run at the Villa during the winter months....the office being discontinued during the summer." The author is aware of twenty postmarks from the 1904-1914 periods, and they all are postmarked between the months of November and March and all written to northern states. Does anyone have early (pre-1918) postmarks from Florence or Florence Villa postmarked during the summer months?

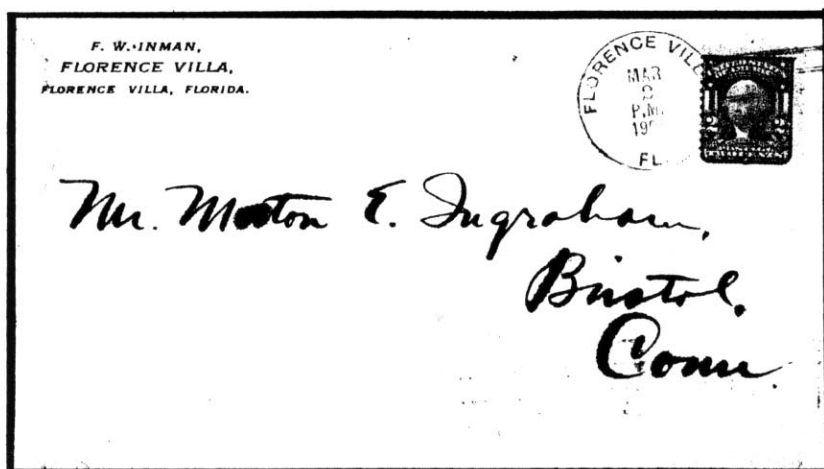


Fig. 3 FLORENCE VILLA / FLA. MAR 2 1905 Doane type II (1) postmark on cover to Conn. with F.W. Inman corner card.

Because of the hundreds, perhaps thousands of visitors to the Florence Villa Hotel, postmarks are very easy to obtain. The most common type postmark is the Doane type II (1) with known usage from March 2, 1905 to March 11, 1913. There are several known with magenta colored ink, which are quite striking. (Fig. 3)

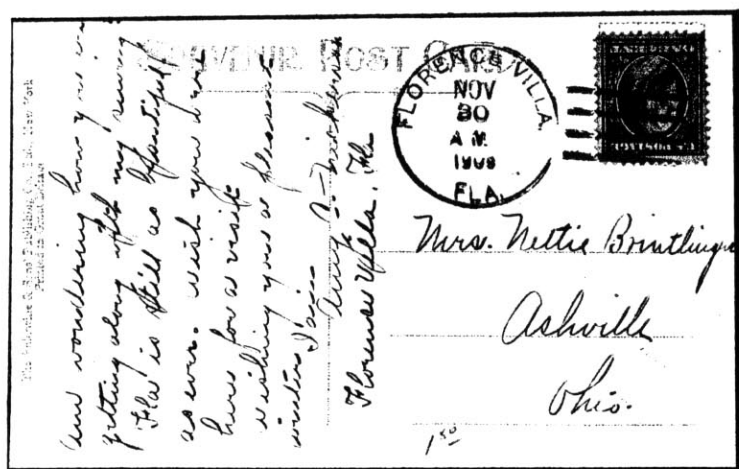



Fig. 4 FLORENCE VILLA / FLA. NOV 30 1909 4-bar A postmark on pc to Ohio.


 ADDRESS ON THIS SIDE ONLY
 Mr. G. L. Osborn
 Millbrook N. Y.
 R. F. D. 27
 1-7023

POSTER & REYNOLDS, 1348 PENNSYLVANIA AVE., WASHINGTON, D. C.

Post Card

(POSTAL CARD-CARTE POSTALE.)
AUTHORIZED BY ACT OF CONGRESS, MAY 3, 1879.

RECEIVED
FEB 15 730AM
1904

FORENCE
FEB 15 1904

POSTAGE

11-1-1

This side is for the address.

The nearby town of Winter Haven grew at an enormous pace and finally grew around Florence Villa. The Florence Villa post office was officially closed on May 31, 1956 and re-opened as a branch of the Winter Haven post office the next day. The Florence and Florence Villa post office had ten postmasters. The longest serving was Mrs. Beulah L. Kunberger who served over 20 years between August 26, 1935, and May 31, 1956. (Fig. 9) She continued on as Station Superintendent after the change to Winter Haven.

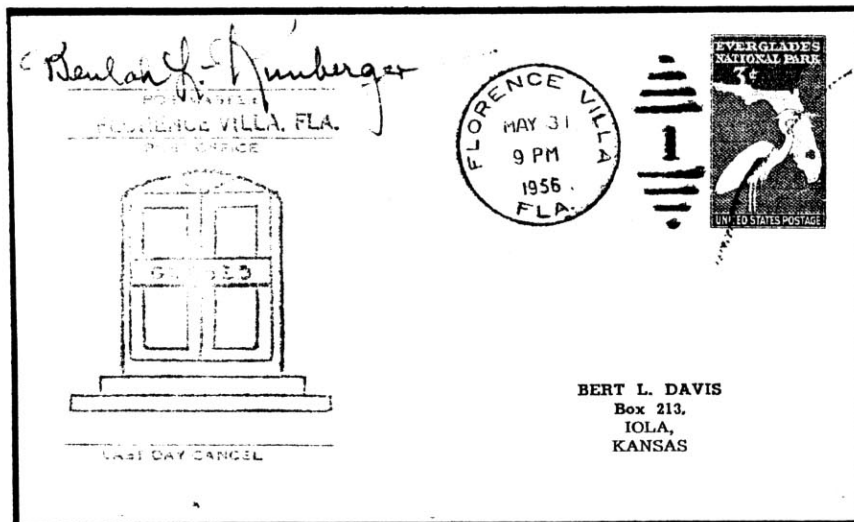


Fig. 9 FLORENCE VILLA / FLA. MAY 31 1956 duplex postmark on last day cover signed by postmaster Kunberger.

Another interesting item is that the Wahneta post office is generally listed as preceding the Florence Villa post office and is listed as a name change to Florence Villa. Based on several items, including site locations by the official Post Office Department records and several newspaper articles of the time, I have concluded that Wahneta should be listed as a stand alone D.P.O., but that is for another story.



41947

ENTRANCE OF "THE FLORENCE VILLA", FLORENCE VILLA, FLORIDA.

Fig. 10 Entrance of Florence Villa circa 1910

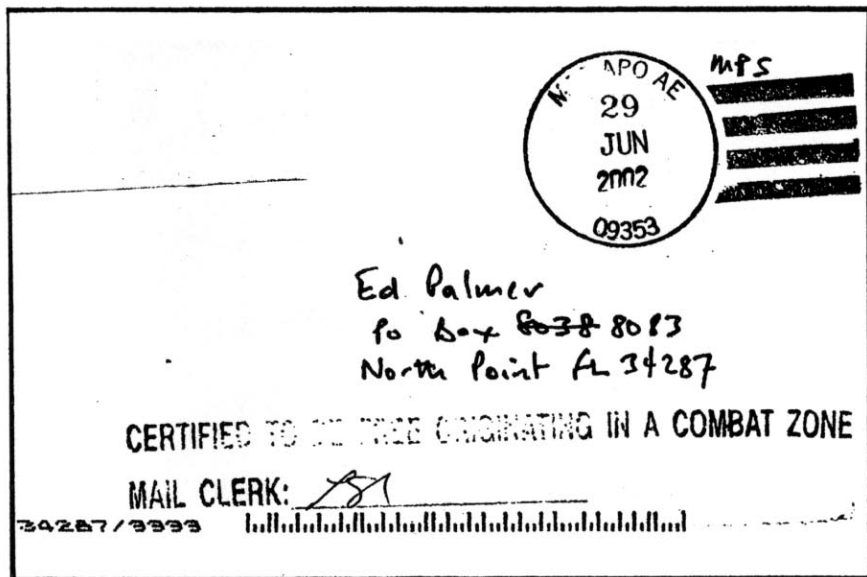


Boat Party Landing at The Florence Villa Dock
Winter Haven, Florida

Fig. 11 The Florence Villa "Yacht"

KRYGYZSTAN TO FLORIDA

Edward F. Palmer



**APO postmark from Krygyzstan dated 29 June 2002 on
stampless soldier's usage to North Point (sic) FL**

I noticed an article in the last issue of the FPHJ with a cover from Afghanistan to Florida sent by a soldier stationed there. The above cover is from a reservist M.D. in the Air Force stationed in Krygyzstan. He is a client of mine and I've blanked out his name and return address as a matter of security for him. It has an interesting hand stamp marking at the bottom: "Certified to be free (originating in a combat zone / Mail Clerk: P81" The address is in error and should read North Port, FL., although the zip code is correct and allowed the cover to arrive at its destination.

BEAZLEY FLA STAMPLESS COVER

Deane R. Briggs, M.D.

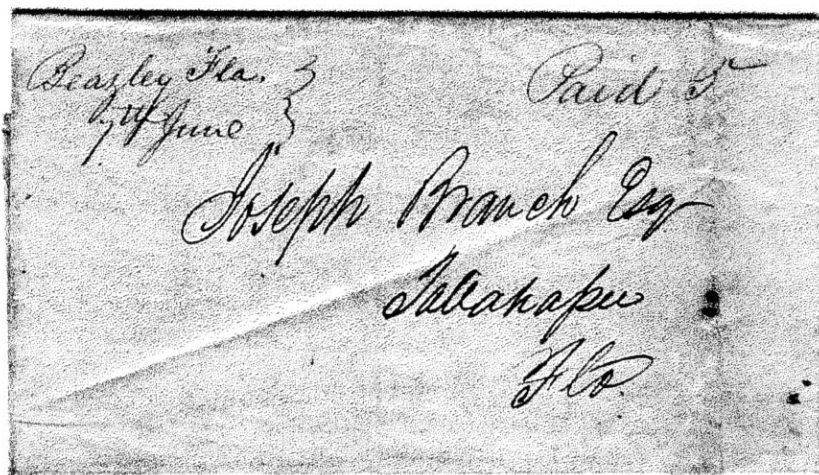


Fig. 1. Beazley Fla. / 7th June manuscript postmark with “Paid 5” rate on outer letter sheet to Tallahassee, Flo.

The above cover sheet was recently released from the Duke University archives and is the only known example of stampless use from Beazley in private hands. The listing example in *Florida Stampless Postal History 1763 – 1861*, is an archival example from the Florida State Archives in Tallahassee. Although this is an undated postmark, the year date can be ascertained by the fact that the post office was opened in Jefferson County on 28 April 1848 and discontinued on 6 June 1849, thus establishing an 1848 usage and as such, the earliest known usage.

Beazley was located on the Bellamy Road connecting Tallahassee to Mosely Hall and Madison and lay a few miles west of Fort Hamilton. It is clearly located as Beazley on period maps as late as 1861. A post office was opened as Perry on 15 April 1850, but changed back to Beaseley (note the new spelling) on 8 March 1851

and continued until 14 September 1886, when mail was handled by the Lamont post office. There is no stampless postal history recorded from either the Perry or Beaseley post offices. Note that this Perry post office was located in Jefferson County and not at the site of the later Perry post office in Taylor County. There is some confusion regarding the two spellings of Beazley. Postal records show both spellings and it is believed that they both were from the same location and not different post offices, although Gallagher's book, *Florida Post Offices* lists them as separate offices.

Thomas McKane was the postmaster during the period of operation of the Beazley post office and postal receipts for the quarter ending June 30, 1849, was only \$2.19. The postmaster's compensation during this period was only \$1.46. This was obviously a very small post office and functioned as Beazley for only a little more than a year.

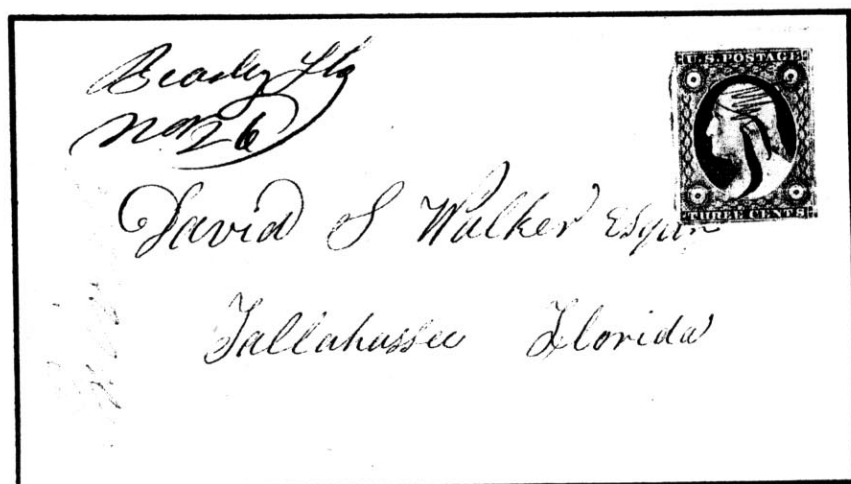
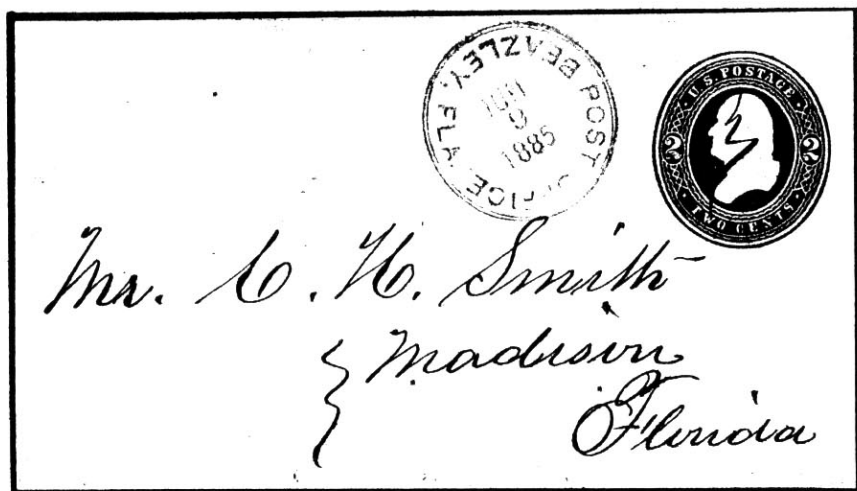


Fig. 2. Beasley Flo / Nov 26 (1858) postmark with pen cancelled #11 on cover to Tallahassee.

To further confuse matters, the above cover from 1858 shows the postmark as Beasley Flo, yet another spelling from this town!!

But the story keeps on going. The cover in Fig. 3. is postmarked with an unusual POST OFFICE / BEAZLEY, FLA. JUN 9 1885 postmark. It is the enclosure, however, that completes this story. It is from Jefferson County Commissioner William Beazley requesting a \$100 advance authorized by the Madison County board of commissioners. He requested it be sent by mail on a train leaving station 4 at Madison for Beazley. The book *History of Jefferson County Florida* by Jerrell H. Shofner misspells William Beazley's name as Beasley and names the original settlement as Beasley's Store and one of the founders of Jefferson County as Cornelius Beasley. It is apparent that the name Beasley and Beazley were interchanged and that the real spelling should have been Beazley according to the spelling and signature of William Beazley. The town of Beazley was really Beazley's Store and the first postmaster Thomas McKane subsequently took over the store and it became known as McKane's store until the onset of the Civil War. Thomas McKane was also a large plantation owner by the time of the war.



**Fig. 3 POST OFFICE / BEAZLEY, FLA. JUN 9 1885
postmark on cover to Madison, Florida**

Beazley, Jeff. Co. Fla.
June 9th / 85-

Mr. A. H. Smith -
Madison Fla ?

Dear Sir

your letter rec'd,
notifying me that the Board of County Com-
missioners of Madison Co, had advised me the
amt, ask for, one Hundred dollars - will
you do me the kindness to receipt for the
same for me, and register the amt to this
office to me I must let right away - and
I am to busy to have to go to Madison
now, we get mail twice a week here -
Tuesday & Friday, the mail will leave Sta #
4, for this place Friday next, early in the
morning, with many thanks for your kindness

D. R. Romaine

Respectfully yours &c

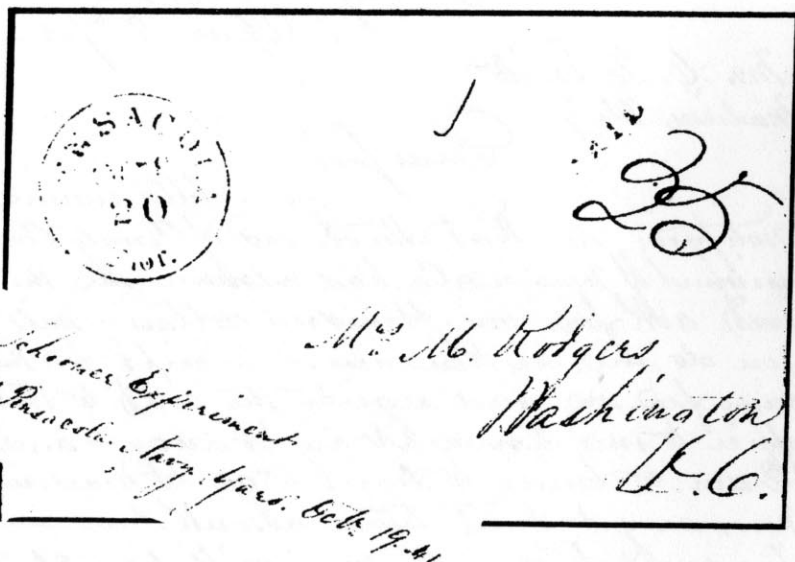
Wm. Beazley

Jeff. Co. { Beazley, J. Fla -

Fig. 4. Enclosure datelined Beazley, Jeff. Co. Fla. / June 8th / 85

SCHOONER EXPERIMENT DATELINE

Niles Schuh



**PENSACOLA / Flor. OCT 20 postmark with PAID 25 rate on
1841 folded letter datelined "Schooner Experiment" Off
Pensacola Navy Yard, Oct 19. 41**

The article by Deane R. Briggs on "Florida Stampless Naval Covers" in the September 2002 issue of the **Florida Postal History Journal** has led me to re-look at some of my stampless covers. Interestingly, I found a new ship dateline in an otherwise ordinary Pensacola territorial folded letter. I also found another example of a cover with "U.S.S. Vandalia / off N. Yard, Pensacola / Apr 26th 1838" dateline and an April 27, 1838 PENZA postmark. This fits in the chronology of the Vandalia (or Vandalla) noted in the above article.

The above cover is a common Pensacola Flor. PAID 25 late territorial Florida stampless cover addressed to Washington, D.C. The dateline, however, is a new ship dateline and adds to our society database. The ship name "Schooner Experiment" is a bit unusual.

DEALER - MEMBERS

CONRAD L. BUSH

205 Hughes St. N.E.
Fort Walton Beach, FL 32548
(850) 243-1638

ELWYN J. DOUBLEDAY, JR.

Box 32
Alton Bay, NH 03810
(603) 875-6310

WILLIAM A. FOX

4 Reef Club
Hilton Head, SC 29926
(843) 681-9455

RICHARD FRAJOLA

P.O. Box 2679
Ranchos De Taos, NM 87557
(505) 751-7607

GARY GROSS

P.O. Box 246
Commack, NY 11725-0246
(631) 499-5074

ROBERT J. HAUSIN

4897 Tamiami Trail East
Naples, FL 34113
(941) 732-7701

RICHARD W. HELBOCK LA POSTA

33470 Chinook Plaza
Suite 216
Scappoose, OR 97056
(503) 657-5685

STAN JAMESON

Empire Company
P.O. Box 264
St. Petersburg, FL 33731
(727) 526-5203

JOHN L. KIMBROUGH

10140 Wandering Way
Benbrook, TX 76126
(817) 244-2447

GORDON D. McHENRY

1615 Clower Creek Dr., T-177
Sarasota, FL 34231-8923
(941) 966-5563

HERBERT P. McNEAL

520 Lakemont Ave. South
Winter Park, FL 32792
(407) 644-4012

ED PALMER

P.O. Box 8083
North Port, FL 34287
(941) 426-6369

DAVID G. PHILLIPS

P.O. Box 611388
North Miami, FL 33161
(305) 895-0470

JOEL RIND

14 W. 8th Street
Chattanooga, TN 37402
(423) 886-3075

S. GEORGE TRAGER

1090 Kane Concourse, #201
Bay Harbor, FL 33154
(305) 868-4727

PHIL V. WARMAN

Suncoast Stamp Co., Inc.
3231 Gulf Gate Dr. #102
Sarasota, FL 34231
(800) 921-3316

C. MICHAEL WIEDEMANN

Box 6130A
Titusville, FL 32782
(321) 269-3377