



# FLORIDA POSTAL HISTORY JOURNAL

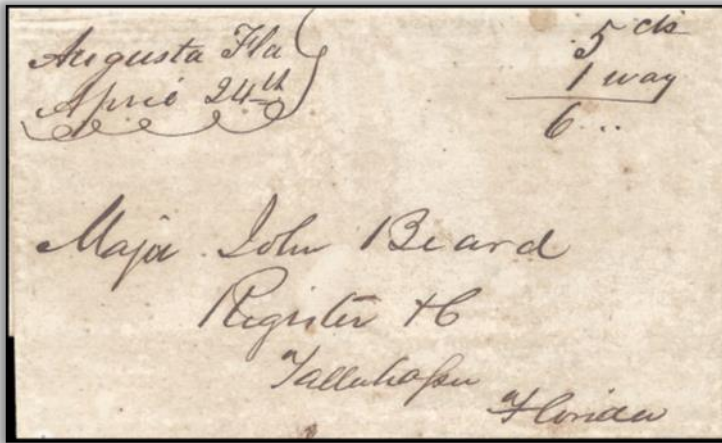


Promoting Philately in the Sunshine State

Vol. 28, No. 3

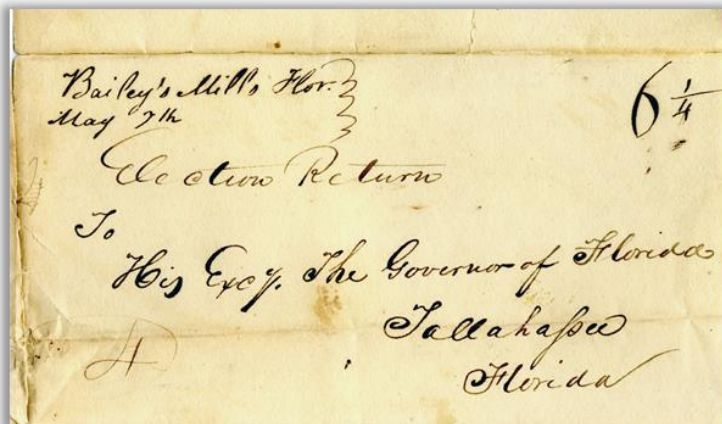
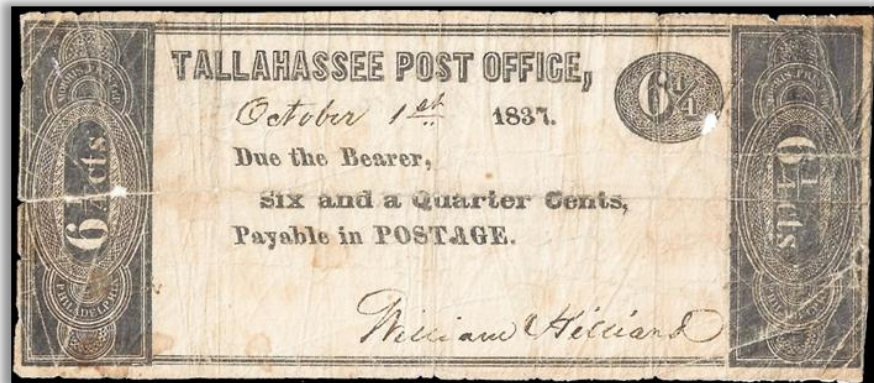
SPECIAL EDITION – July 2021

Whole No. 78



**Florida  
“Way” Covers**

**Florida Post  
Office Scrip  
1837 - 1840**



**Florida 6¼¢ Postal  
Rate Census**

## FORWARD

With great pleasure, the Florida Postal History Society offers a Special Edition of the *Florida Postal History Journal* to its membership and other interested collectors. Such editions seek to showcase lengthy articles reflecting outstanding original Florida postal history research and composition.

In this edition, Deane R. Briggs, M.D. discusses in “*Florida ‘Way’ Covers*” Spanish West Florida, territorial, and statehood Florida Way covers. Thomas Lera proposes the reasons why “*Florida Post Office Scrip 1837 - 1840*” was issued payable in postage at the Tallahassee Post Office. Phil Eschbach presents twenty-five covers comprising the “*Florida 6¼¢ Postal Rate Census*.”

We hope you will enjoy these offerings and we look forward to the opportunity to present additional articles to the Florida society membership and others in the philatelic community.

Vernon R. Morris, M.D.  
President, Florida Postal History Society

### TABLE OF CONTENTS

<b>Florida “Way” Covers</b> <i>by Deane R. Briggs, M.D.</i> .....	pp. 3-13
<b>Florida Post Office Scrip 1837 - 1840</b> <i>by Thomas M. Lera</i> .....	pp. 14-23
<b>Florida 6¼¢ Postal Rate Census</b> <i>by Phil Eschbach</i> .....	pp. 24-39

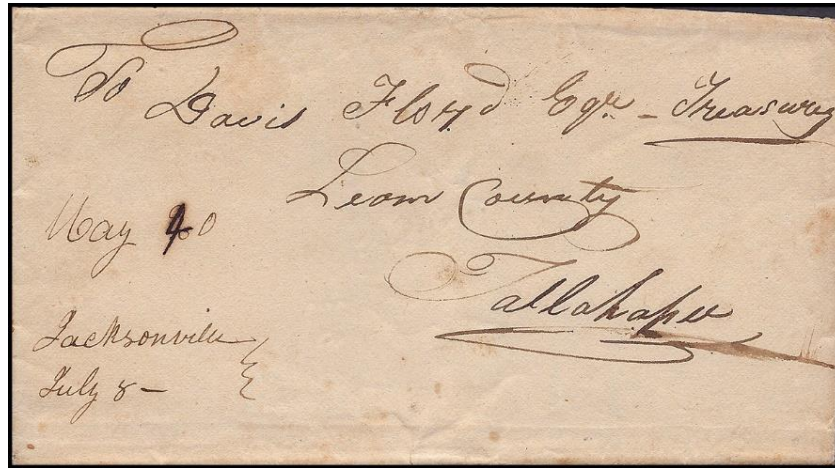
### FLORIDA POSTAL HISTORY SOCIETY BOARD OF DIRECTORS AND OFFICERS

<b>President</b>	<b>Dr. Vernon R. Morris</b> pres@fphsonline.com	<b>Director At-Large</b>	<b>Mr. Stephen L. Strobel</b> atlarge1@fphsonline.com
<b>Vice President</b>	<b>Mr. Juan L. Riera</b> vpres@fphsonline.com	<b>Director At-Large</b>	<b>Mr. Thomas M. Lera</b> atlarge2@fphsonline.com
<b>Secretary</b>	<b>Mr. Todd Hause</b> sec@fphsonline.com	<b>Director At-Large</b>	<b>Mr. Steve Kennedy</b> atlarge3@fphsonline.com
<b>Treasurer</b>	<b>Dr. Deane R. Briggs</b> treas@fphsonline.com	<b>Past President</b>	<b>Mr. Francis Ferguson</b> ferg@FloridaStampShows.com
<b>Journal Editor and Publisher</b>	<b>Mr. Steve Swain</b> jedit@fphsonline.com	<b>Webmaster</b>	<b>Mr. Francis Ferguson</b> ferg@FloridaStampShows.com

Copyright ©2021 Florida Postal History Society. All rights reserved. Opinions expressed by the authors are their own and do not necessarily reflect those of the Florida Postal History Society or its officers. Permission is granted for noncommercial reference and partial reproduction of material contained herein, provided that attribution is given to the Florida Postal History Society and the author of the referenced article. Such citation must include the specific issue(s) of *Florida Postal History Journal*. Reprint of articles appearing in the *Florida Postal History Journal* require the prior written permission of the editor. Commercial use of any material requires prior written approval of the Florida Postal History Society officers.

# FLORIDA “WAY” COVERS

By Deane R. Briggs, M.D.



*Figure 1. Jacksonville July 8- (1827) type I manuscript postmark with Way 20 rate, corrected to 40 on cover to Tallahassee. (ex Briggs, Johnson)*

## INTRODUCTION

Way rated covers are extremely uncommon from territorial or statehood period Florida with only one Florida recorded example in the American Stampless Cover Catalog.<sup>1</sup> This article will discuss the various Way usages from Spanish West Florida, four currently known territorial and three known statehood Florida usages. The article will conclude with a listing census of these very rare usages.

Prior to Florida becoming a territory of the United States in 1822, mail was handled at nearby U. S. post offices, St. Marys, Georgia for East Florida and Fort Adams, Pinckneyville and Natchez in the Mississippi Territory for West Florida. Incoming mail for West Florida might also be received at New Orleans for delivery to settlers in West Florida. Most of this mail would be taken personally or by a favored person to and from these post offices with normal postal rates based on the distance from point of entry of the mails. Most of this mail was sent unpaid with postage to be collected from the recipient. This offered some assurance that the mail would arrive and not be lost in-route.

## POSTAL REGULATIONS ESTABLISHING WAY FEE

Mail might also be picked up or delivered by a post rider or mail carrier at a plantation or home on his route and taken to the next U.S. post office on his route (on his “way” so to speak). The Act of May 8, 1794, effective June 1, 1794, stated:

“Sec. 15. And be it further enacted that the deputy-postmasters and other agents of the Postmaster-General, shall duly account, and answer to him, for all way-letters, which shall come to their hands. And for this purpose, the post riders and other carriers of the mail, receiving any way-letter or letters (and it shall be their duty to receive them, if presented more than two miles from a post-office) shall deliver the same, together with the postage, if paid, at the first post-office, to which they shall afterwards arrive, where the postmaster shall duly enter the same, and specify the number and rate or rates in the post-bill, adding to the rate of each way-letter, one cent, which shall be paid by the deputy-postmaster, to the mail-carrier from whom such way-letter shall be received.”